



Coimisiún na Scrúduithe Stáit
State Examinations Commission

LEAVING CERTIFICATE EXAMINATION, 2019

WRITE YOUR EXAMINATION NUMBER HERE 

MUSIC - HIGHER LEVEL
COMPOSING (100 marks)
THURSDAY 20 JUNE - AFTERNOON 3:15-4:45

CENTRE STAMP

FOR THE EXAMINER

Total marks

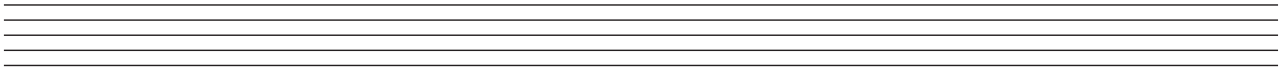
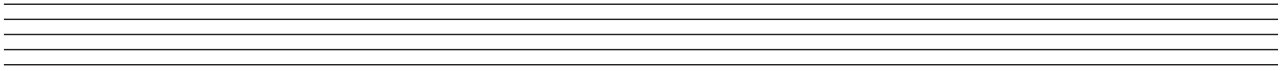
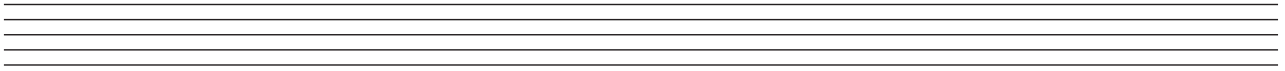
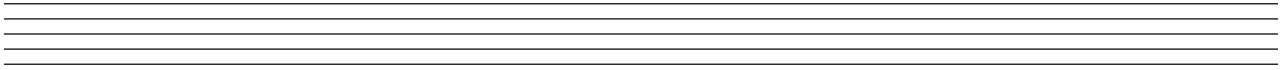
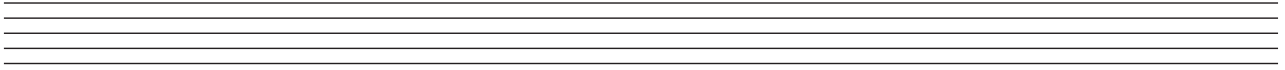
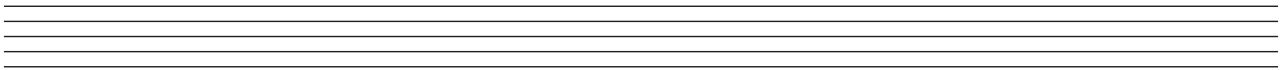
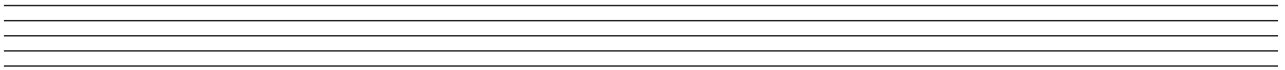
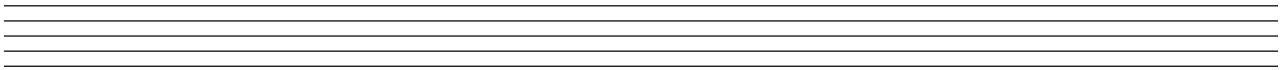
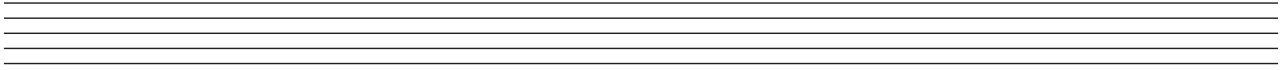
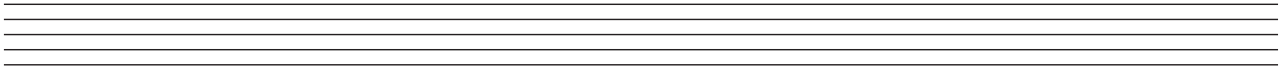
QUESTION	MARK			
1				
2				
3				
4				
5				
6				
TOTAL				
GRADE				

INSTRUCTIONS TO CANDIDATES

- Write your examination number in the box above.
- Answer the questions in the spaces provided in this answer book.
- Use the blank staves throughout the answer book for roughwork.

1. Total of end of page totals	
2. Aggregate total of all disallowed questions	
3. Total mark awarded (1 minus 2)	

ROUGH WORK



Answer TWO questions
ONE from Section A (Melody Composition) and ONE from Section B (Harmony)

SECTION A – MELODY COMPOSITION (40 marks)

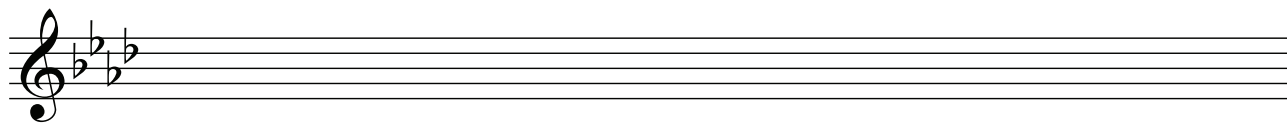
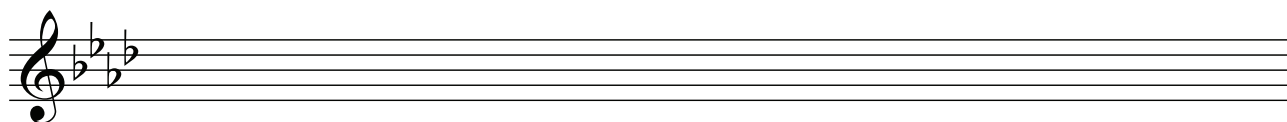
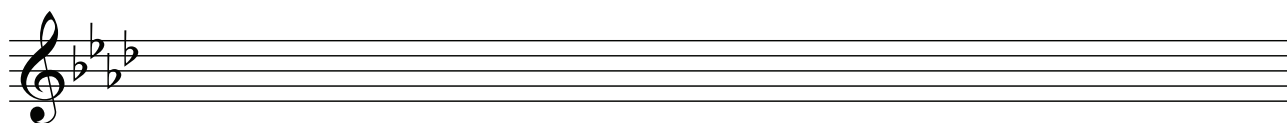
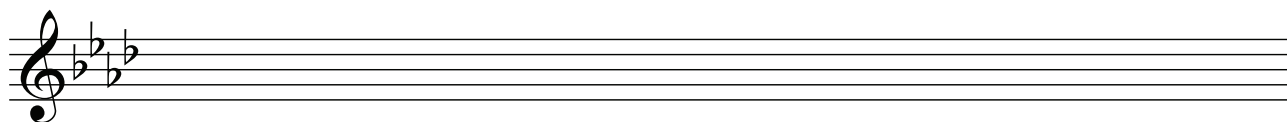
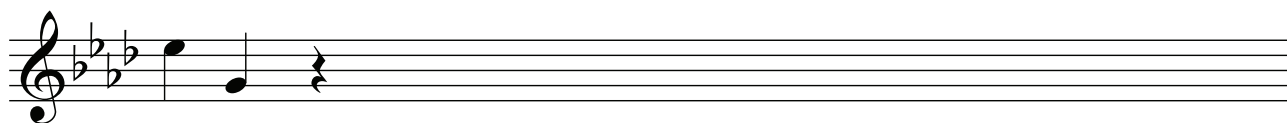
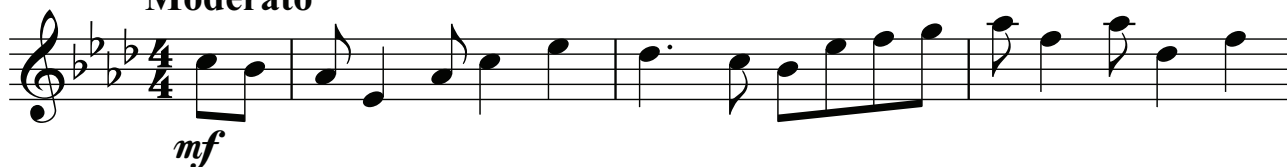
Answer **one** question only in this section: Q1 or Q2 or Q3.

Q.1 CONTINUATION OF A GIVEN OPENING

- Continue the opening below to make a 16–bar melody.
- Include a modulation to the dominant at a suitable point.
- Add appropriate performing directions (phrasing and dynamics) to the melody.
- Choose a suitable instrument for your melody from the following list:

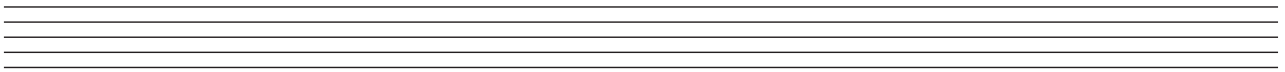
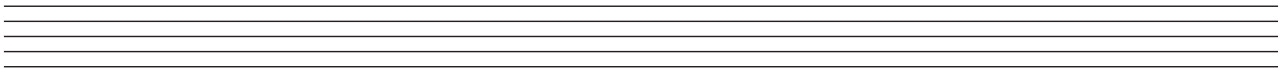
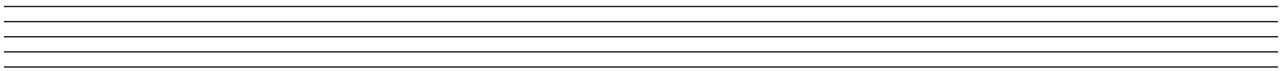
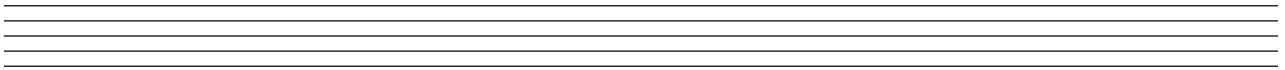
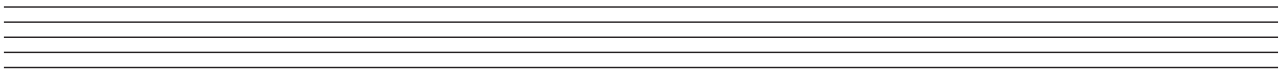
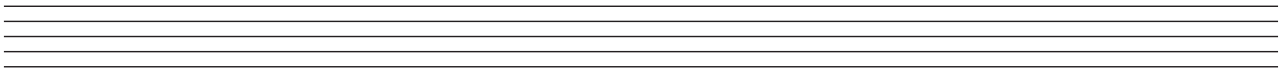
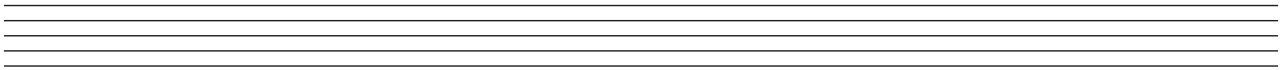
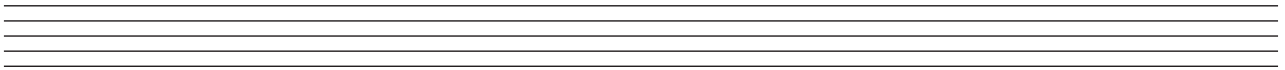
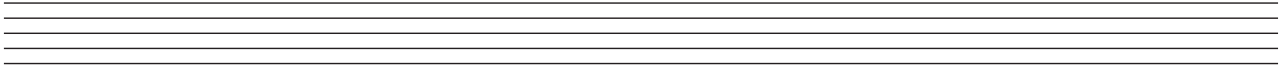
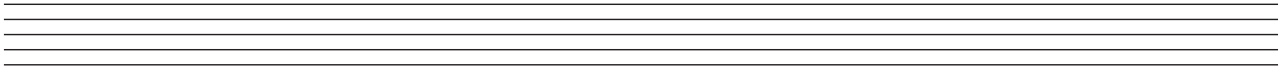
horn violin clarinet flute

Moderato



(40)

ROUGH WORK



Q.2 SETTING MUSIC TO A GIVEN TEXT

Here is an extract from the poem *The Fair-Haired Girl* (Anonymous 18th century).

The sun has set, the stars are still,
The red moon hides behind the hill;
The tide has left the brown beach bare,
The birds have fled the upper air.

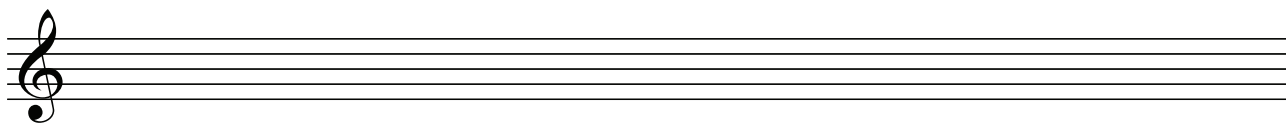
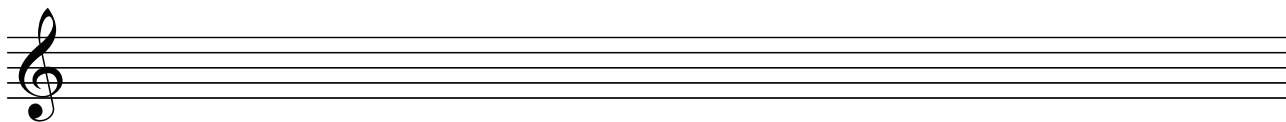
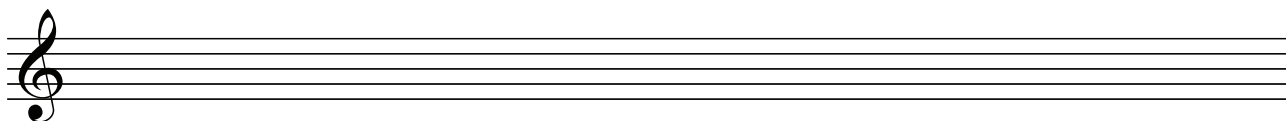
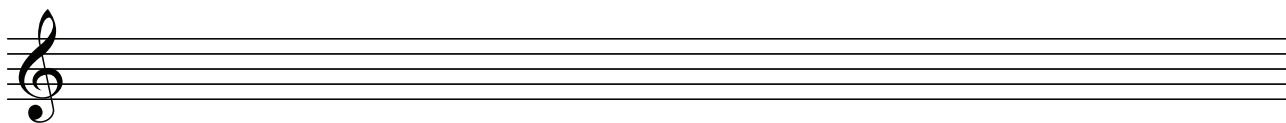
The opening line has been set to music below.

- Set the remaining words to make a melody of 16 bars.
(You may exceed this number of bars and include a modulation, if you wish.)
- Add appropriate performing directions (phrasing and dynamics) to the melody.

Moderato

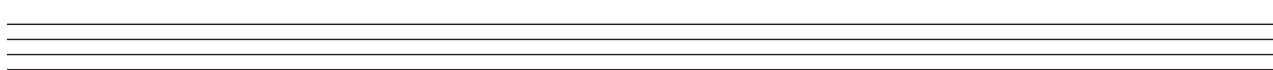
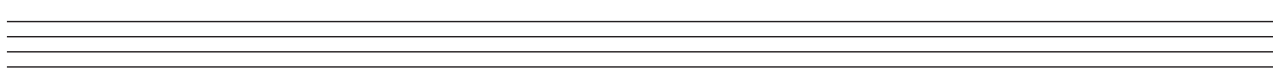
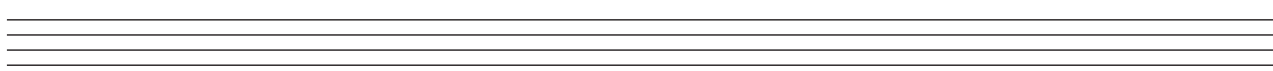
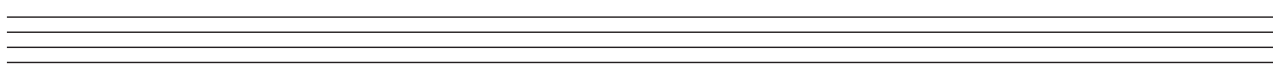
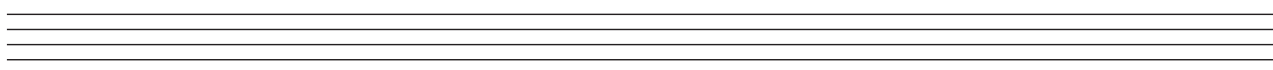
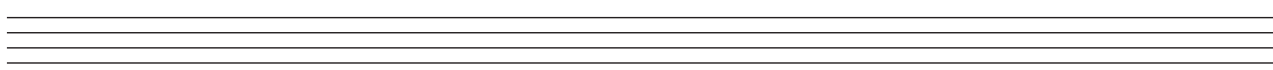
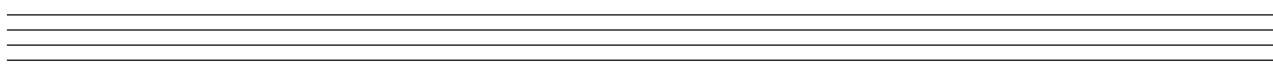
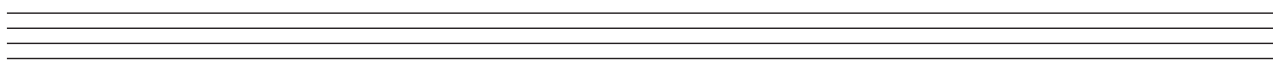
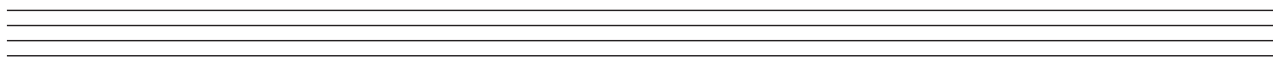
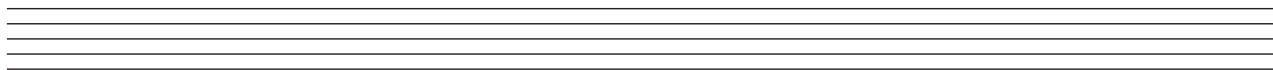
mp

The_ sun has_ set, the stars__ are_ still,___



(40)

ROUGH WORK



Q.3 COMPOSING TO A GIVEN DANCE RHYTHM OR METRE OR FORM

The opening phrase of a jig is given below.

- Continue the given opening to make a 16-bar melody.
- Use the form AA¹BB¹.
- Add appropriate performing directions (phrasing and dynamics) to the melody.
- Choose a suitable instrument for your melody from the following list:

violin oboe clarinet trumpet

Moderato

mf

(40)

SECTION B – HARMONY (60 marks)

Answer **one** question only in this section: Q4 or Q5 or Q6.

Q.4 COMPOSING MELODY AND BASS NOTES FROM A SET OF CHORDS

PREPARATORY WORK

- Plot the chords available in the key of B minor, either in the chord bank grid or on the staff below.

Notes of chord	F# D B	G E C#	A# F# D				E C# A#
Chord symbol	Bm	C#°	D+				A#°
Roman numeral	i	ii°	III+	iv	V	VI	vii°

i ii° [III+] iv V VI [vii°]

ROUGH WORK

Three sets of empty musical staves for rough work, each consisting of a treble clef staff and a bass clef staff.

FOR THE EXAMINER

Bass notes				
Bass quality				
Melody				

- Study the piece of music below.
- Using the chords indicated, compose melody and bass notes to complete the piece in the given style.

Bm Em F# F#/A# Bm Em F#

Bm Bm/D Em Em/G C#°/E F# Bm

Em Em/G Bm Em Em/G F#

G Em Bm Bm/D C#°/E F# Bm

(60)

Q.5 COMPOSING BASS NOTES AND CHORD INDICATIONS TO A GIVEN TUNE

PREPARATORY WORK

- Plot the chords available in the key of C minor, either in the chord bank grid or on the staff below.

Notes of chord	G E \flat C	A \flat F D	B G E \flat				F D B
Chord symbol	Cm	D $^{\circ}$	E \flat $^{+}$				B $^{\circ}$
Roman numeral	i	ii $^{\circ}$	III $^{+}$	iv	V	VI	vii $^{\circ}$

A musical staff in C minor (one flat) showing seven chord symbols: i, ii $^{\circ}$, III $^{+}$, iv, V, VI, and vii $^{\circ}$. Above each symbol is a chord diagram showing the notes of the chord on a treble clef staff. The notes for each chord are: i (C, E \flat , G), ii $^{\circ}$ (D, F, A \flat), III $^{+}$ (B, G, E \flat), iv (F, A \flat , C), V (G, B, D), VI (A \flat , C, E \flat), and vii $^{\circ}$ (F, D, B).

ROUGH WORK

Three sets of empty musical staves for rough work, each consisting of a treble clef staff and a bass clef staff.

FOR THE EXAMINER

Chords				
Chord progression quality				
Bass notes				
Bass quality				

- Study the piece of music below.
- Insert suitable bass notes and chord indications in the style of the given opening.
- Do not use the same chord in the same position in adjacent boxes.
- You may use either chord symbols or Roman numerals, but not both.

Chord symbols: \boxed{i} $\boxed{V^7}$ \boxed{i} \boxed{iv} \boxed{V}
 \boxed{Cm} $\boxed{G^7}$ \boxed{Cm} \boxed{Fm} \boxed{G}

Chord symbol boxes: \square \square \square \square \square \square

Chord symbol boxes: \square \square \square \square \square \square \square \square

Chord symbol boxes: \square \square \square \square \square \square \square \square \square

(60)

Q.6 ADDING A COUNTERMELODY OR DESCANT AND CHORDAL SUPPORT TO A GIVEN TUNE

PREPARATORY WORK

- Plot the chords available in the key of B \flat major, either in the chord bank grid or on the staff below.

Notes of chord	F D B \flat		A F D				E \flat C A
Chord symbol	B \flat		Dm				A $^{\circ}$
Roman numeral	I	ii	iii	IV	V	vi	vii $^{\circ}$

A musical staff in B \flat major showing chord symbols and their corresponding chord diagrams. The symbols are I, ii, iii, IV, V, vi, and vii $^{\circ}$. The iii, vii $^{\circ}$, and vii $^{\circ}$ symbols are enclosed in brackets. Above each symbol is a chord diagram showing the notes on a five-line staff.

ROUGH WORK

Three sets of empty musical staves for rough work, each consisting of a five-line staff.

FOR THE EXAMINER

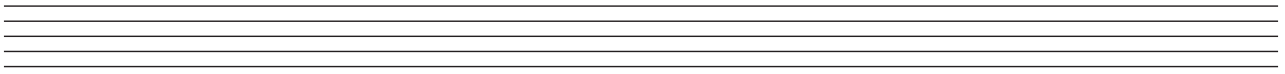
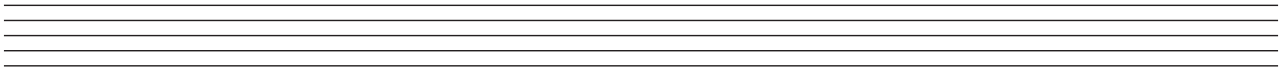
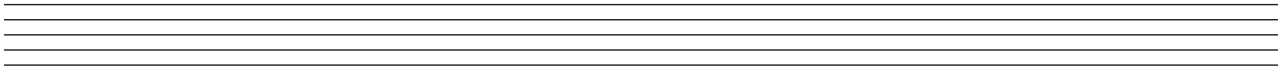
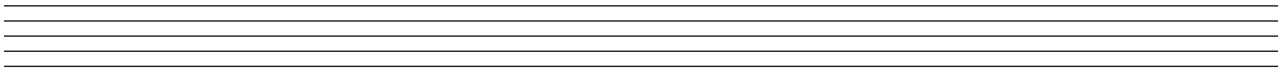
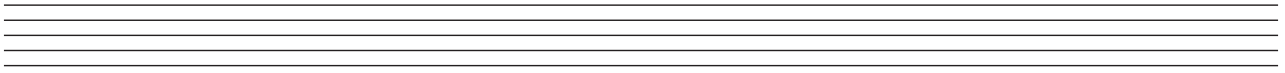
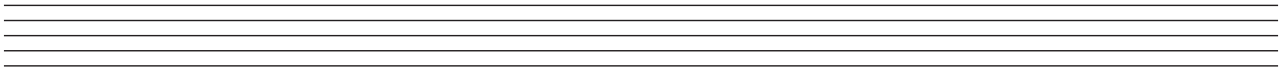
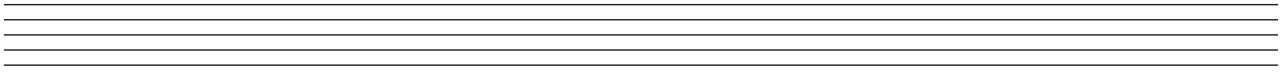
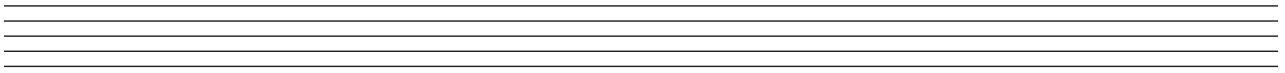
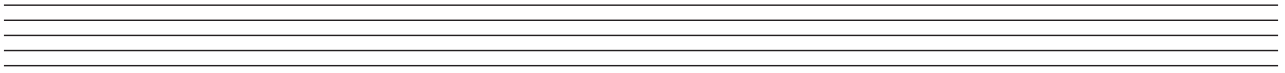
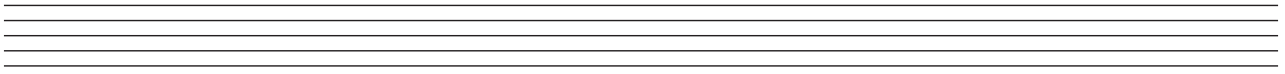
Chords				
Chord Progression Quality				
Descant				

- Study the piece of music below.
- Insert suitable chord indications in the boxes provided.
- Continue the descant part in the given style to complete the piece.
- Do not use the same chord in the same position in adjacent boxes.
- You may use either chord symbols or Roman numerals, but not both.

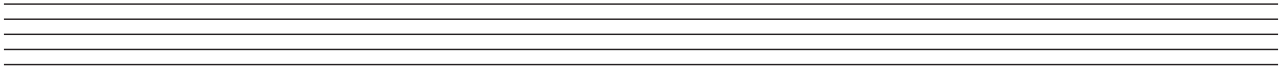
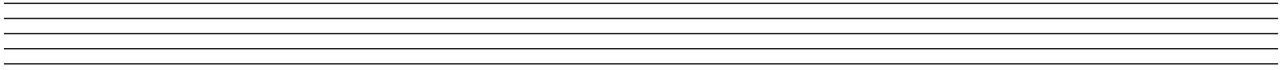
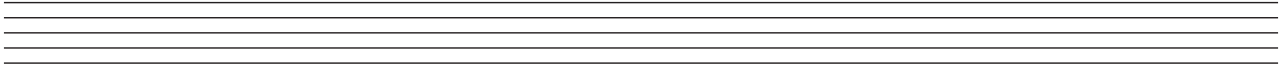
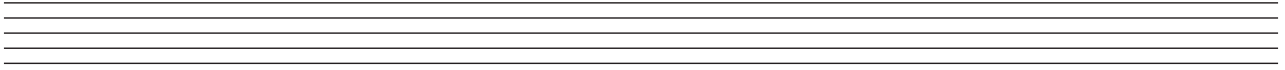
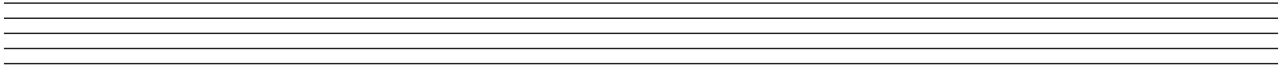
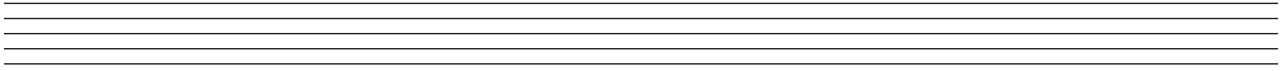
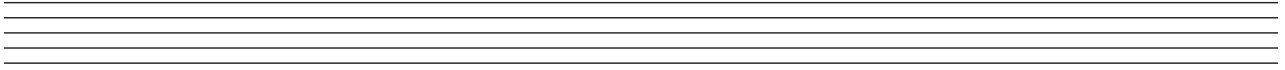
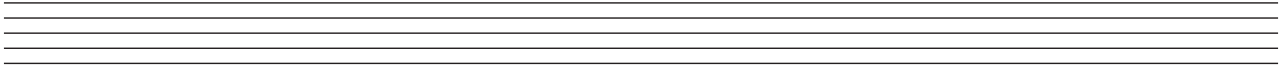
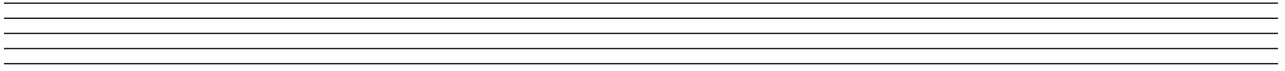
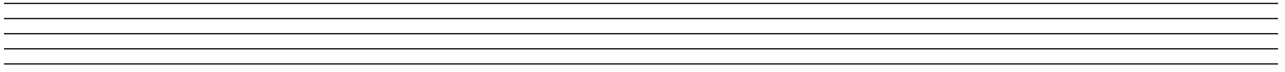
Chord symbols for the first system: I (B \flat), IV \flat (E \flat /G), V \flat (F/A), I (B \flat), V (F)

(60)

ROUGH WORK



ROUGH WORK



Blank page