



**Coimisiún na Scrúduithe Stáit**  
**State Examinations Commission**

**Junior Certificate 2013**

**Marking Scheme**

**Technical Graphics**

**Higher Level**

## **Note to teachers and students on the use of published marking schemes**

Marking schemes published by the State Examinations Commission are not intended to be standalone documents. They are an essential resource for examiners who receive training in the correct interpretation and application of the scheme. This training involves, among other things, marking samples of student work and discussing the marks awarded, so as to clarify the correct application of the scheme. The work of examiners is subsequently monitored by Advising Examiners to ensure consistent and accurate application of the marking scheme. This process is overseen by the Chief Examiner, usually assisted by a Chief Advising Examiner. The Chief Examiner is the final authority regarding whether or not the marking scheme has been correctly applied to any piece of candidate work.

Marking schemes are working documents. While a draft marking scheme is prepared in advance of the examination, the scheme is not finalised until examiners have applied it to candidates' work and the feedback from all examiners has been collated and considered in light of the full range of responses of candidates, the overall level of difficulty of the examination and the need to maintain consistency in standards from year to year. This published document contains the finalised scheme, as it was applied to all candidates' work.

In the case of marking schemes that include model solutions or answers, it should be noted that these are not intended to be exhaustive. Variations and alternatives may also be acceptable. Examiners must consider all answers on their merits, and will have consulted with their Advising Examiners when in doubt.

## **Future Marking Schemes**

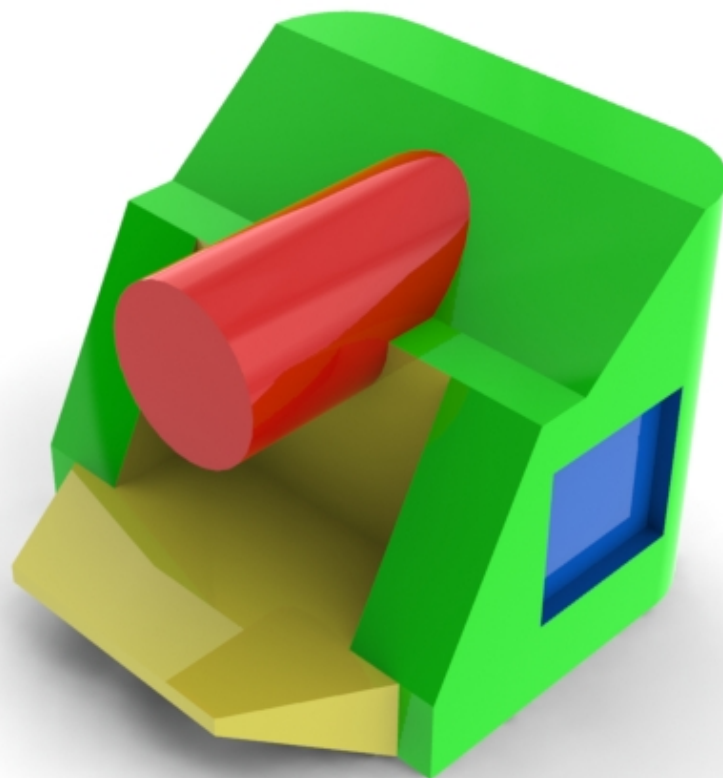
Assumptions about future marking schemes on the basis of past schemes should be avoided. While the underlying assessment principles remain the same, the details of the marking of a particular type of question may change in the context of the contribution of that question to the overall examination in a given year. The Chief Examiner in any given year has the responsibility to determine how best to ensure the fair and accurate assessment of candidates' work and to ensure consistency in the standard of the assessment from year to year. Accordingly, aspects of the structure, detail and application of the marking scheme for a particular examination are subject to change from one year to the next without notice.



**Coimisiún na Scrúduithe Stáit**  
*State Examinations Commission*

*Junior Certificate Examination 2013*

## ***Technical Graphics***



### ***Higher Level*** ***Marking Scheme***

#### ***Section A and B***

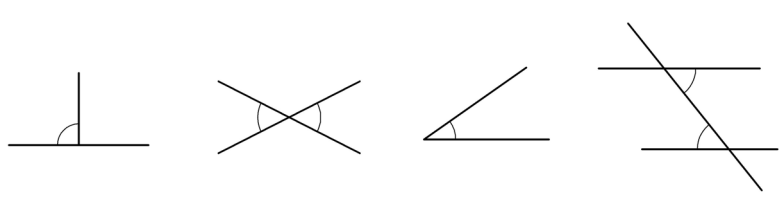
*Section A – any ten questions from this section*

*Section B – any four questions from this section*

**Section A – any ten questions from this section**

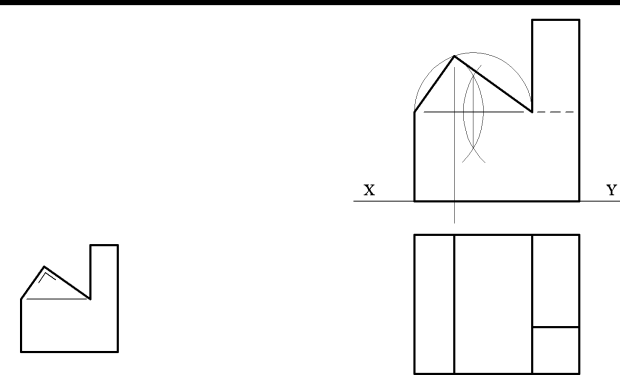
<b>Q1</b>	12	Four diagrams, 3 marks for each correct label.
<b>Q2</b>	6	Bisect base of triangle (3), draw semi-circle (3)
	2	Project from plan
	4	Complete elevation
<b>Q3</b>	2	Locate back apex
	10	Ten lines, 1 mark each
<b>Q4</b>	4	Legs
	3	Seat
	3	Back
	2	Colour or Shade
<b>Q5</b>	6	Bisect side of triangle
	6	Drawing required rectangle
<b>Q6</b>	2	Drawing <b>FP &amp; F1P</b>
	3	Determine half major axis; length (2), bisect (1)
	3	Draw major (1) and minor (2)
	4	Draw semi-ellipse
<b>Q7</b>	4	Projections to plan
	8	Cut surface in plan
<b>Q8</b>	8	Sander depicted in a <u>good quality</u> freehand pictorial sketch.
	4	Appropriate shading or colour.
<b>Q9</b>	12	Line, Dimension, Extrude, Chamfer (4 marks for each correct term)
<b>Q10</b>	4	Projecting points from plan and end view (2,2)
	8	Completion dispenser
<b>Q11</b>	4	$A = 76^\circ$
	4	$B = 38^\circ$
	4	$C = 52^\circ$
<b>Q12</b>	6	Join centres (1), bisect line (3), draw semi-circle (2)
	2	Add radii and swing arc
	2	Locate points of contact
	2	Draw tangent
<b>Q13</b>	4	Two arcs identifying centre
	4	Drawing plate in position
	4	Points of contact
<b>Q14</b>	3	Projecting perpendicular to X1Y1
	2	Marking heights in auxiliary view
	7	Completing block (5), Hidden detail (2)
<b>Q15</b>	8	Four points, 2 marks each.
	4	Complete graph

1.

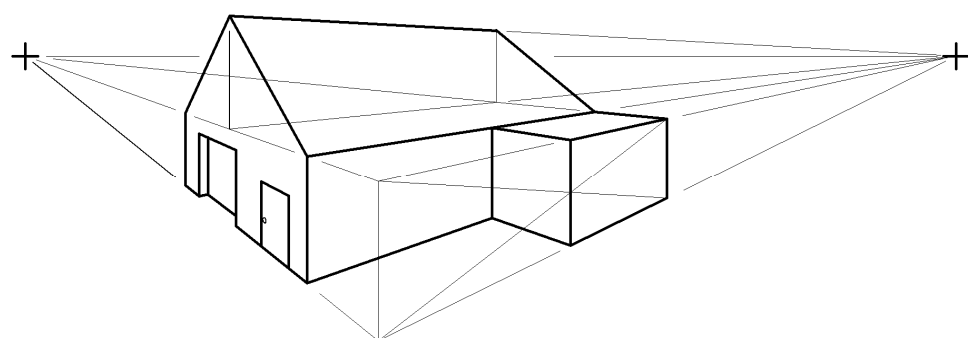


Perpendicular      Opposite      Acute      Alternate

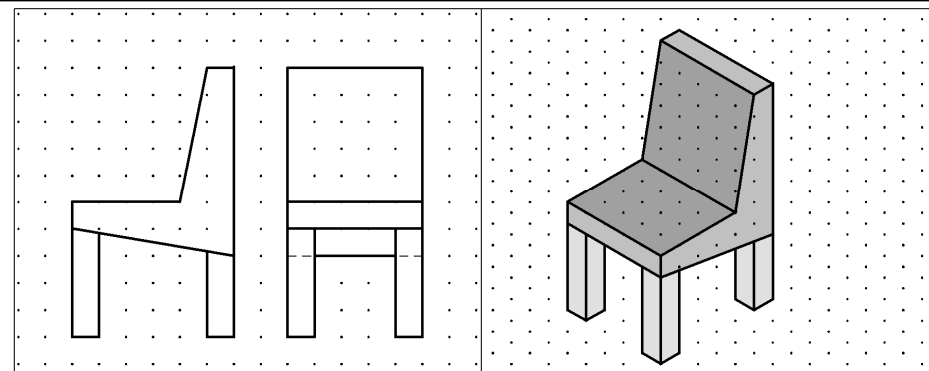
2.



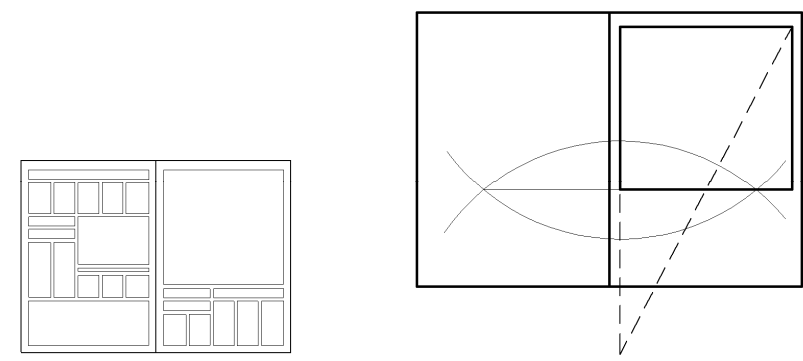
3.

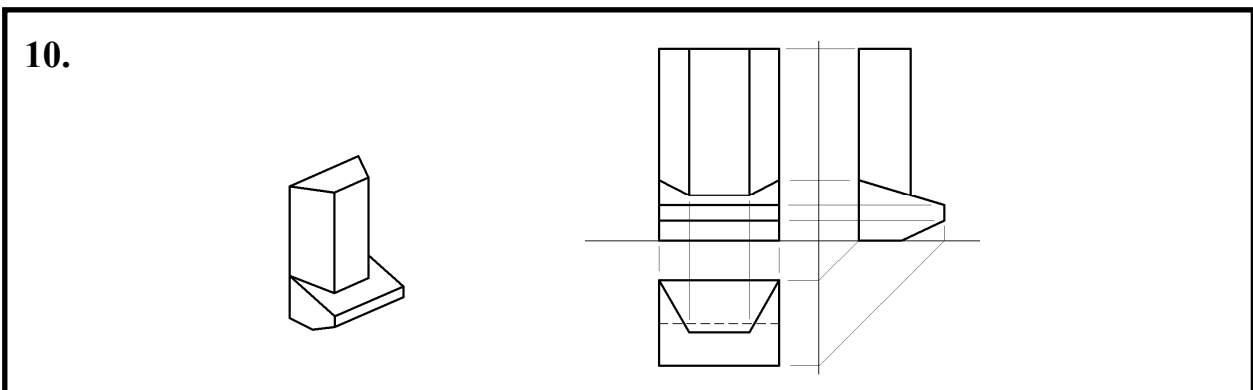
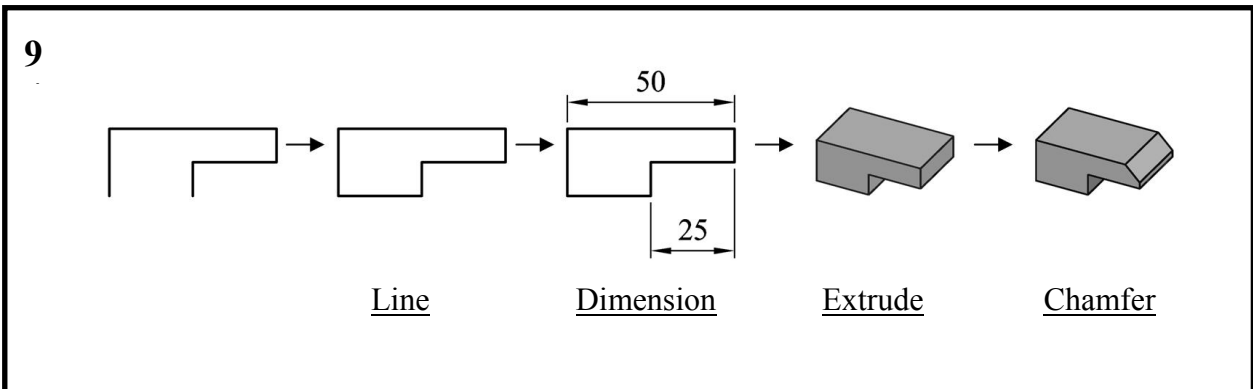
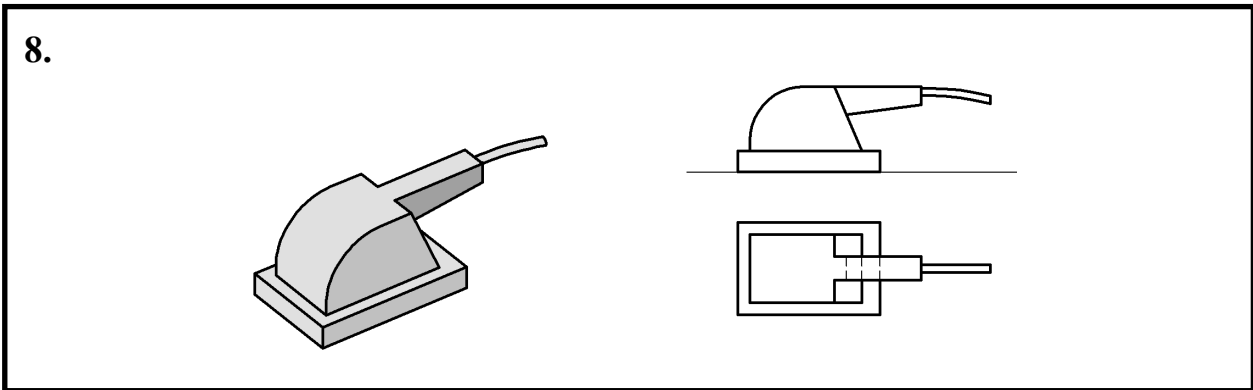
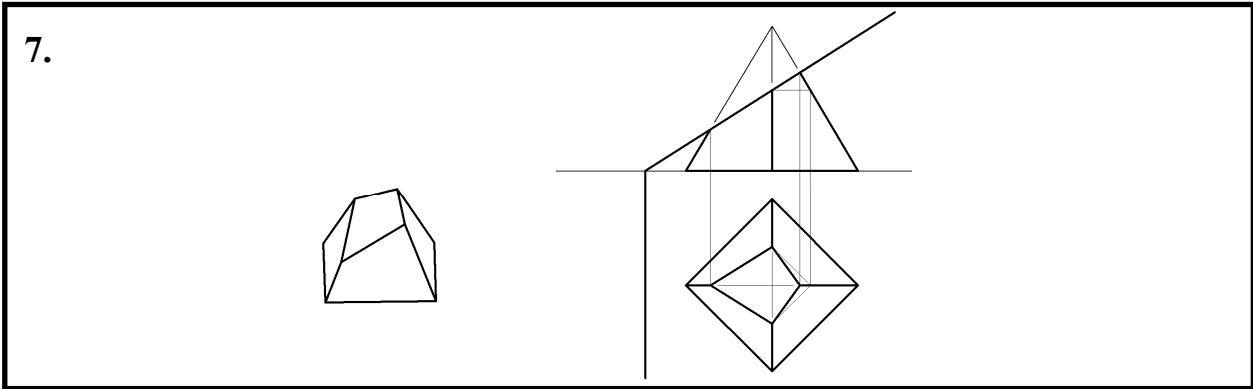
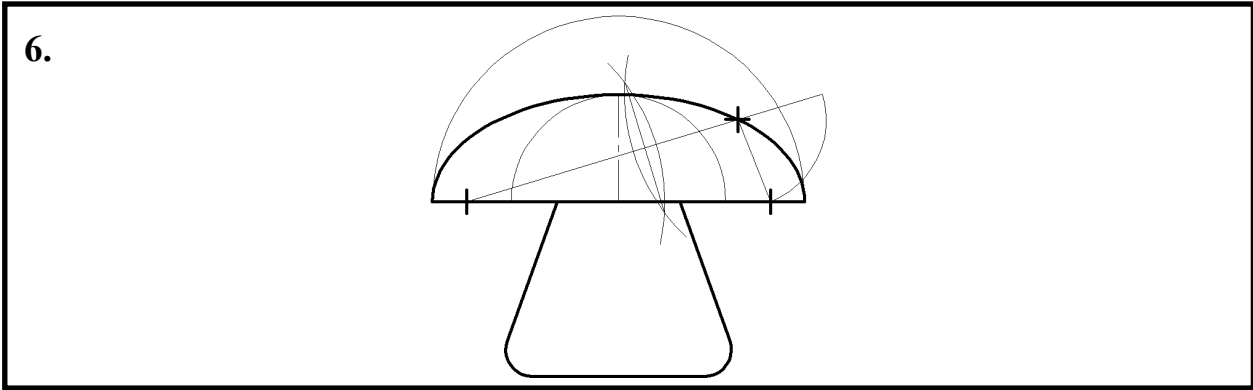


4.



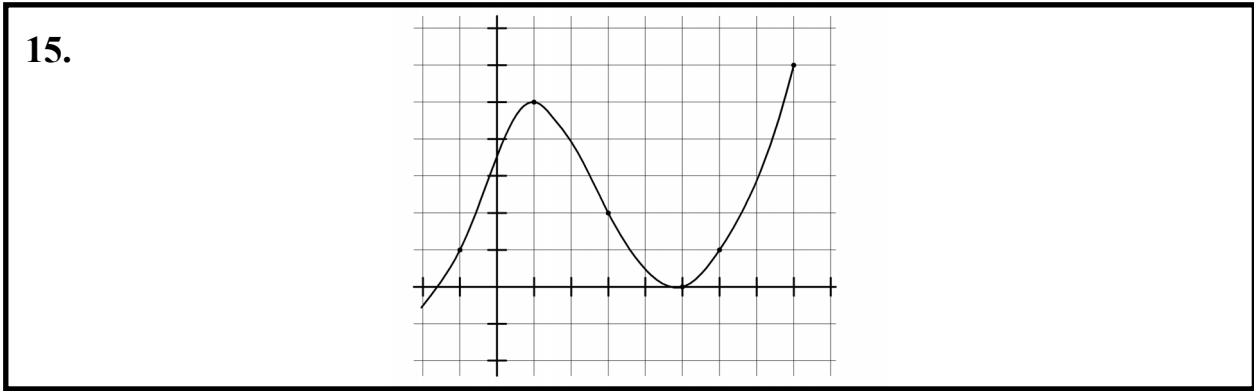
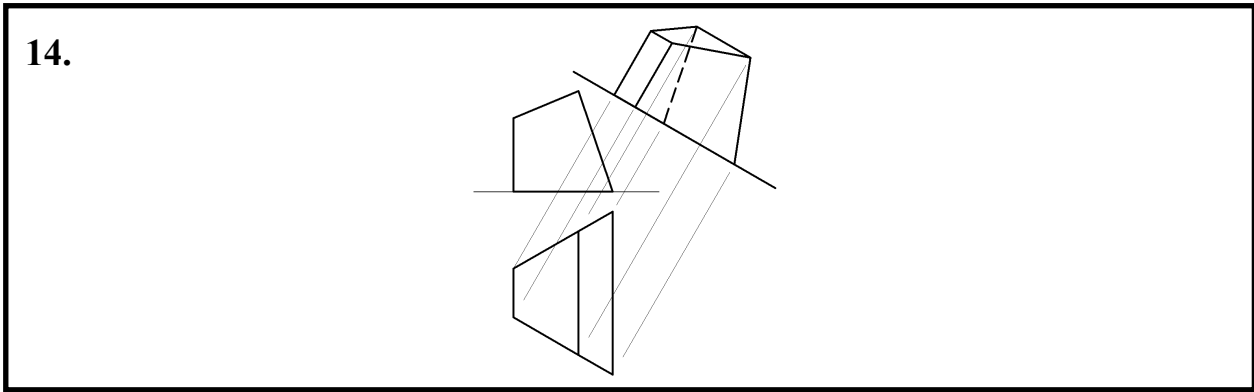
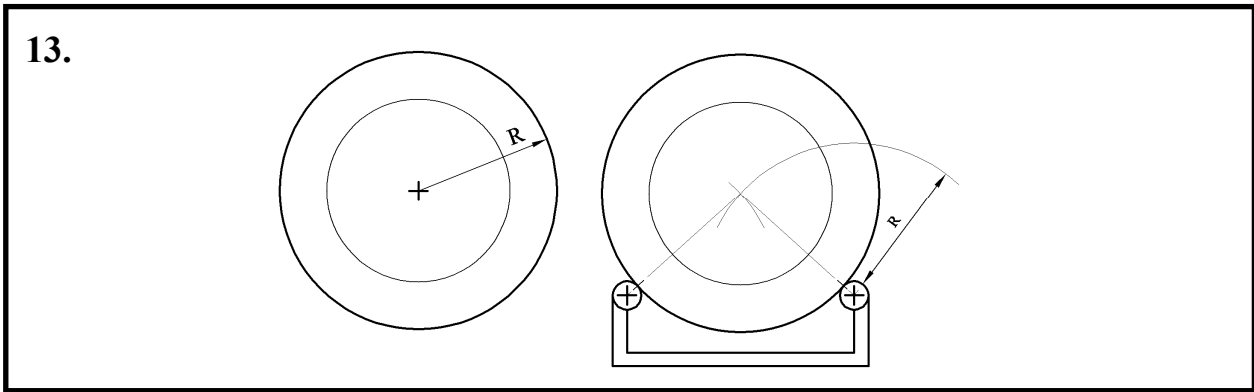
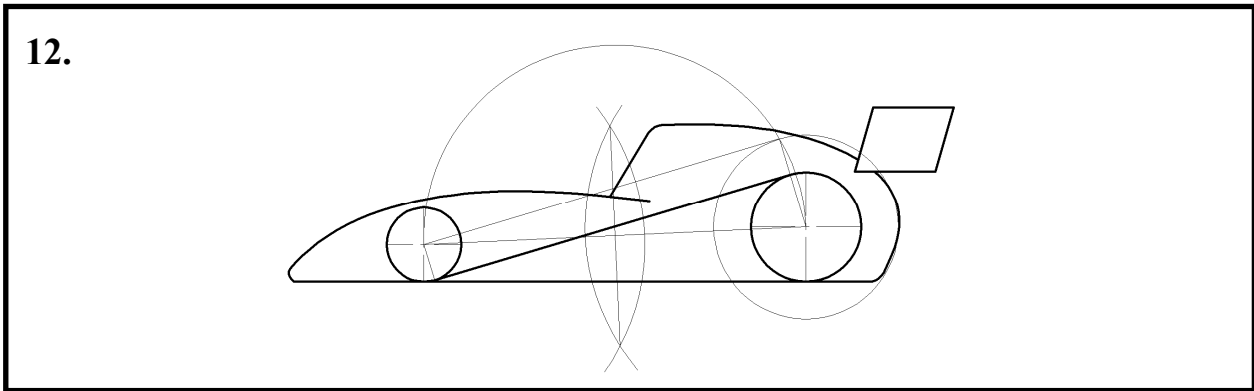
5.





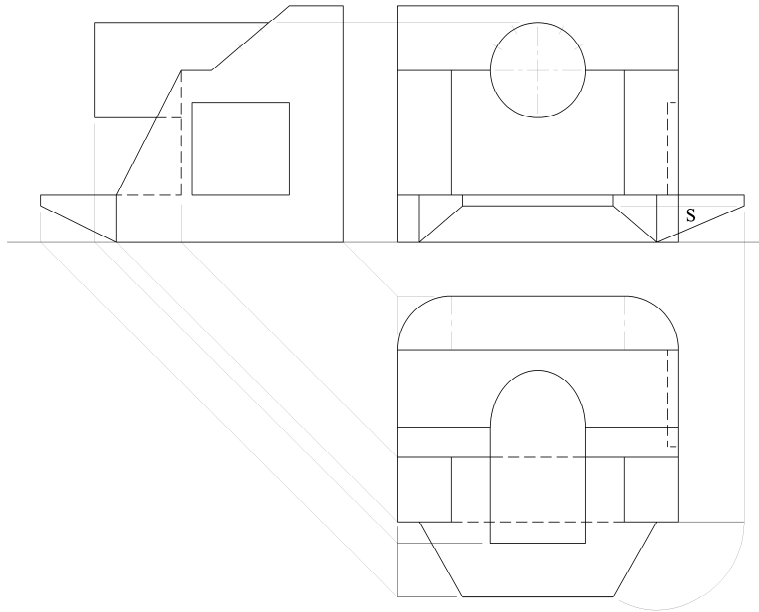
11.

$A = 76^\circ$   
 $B = 38^\circ$   
 $C = 52^\circ$



**Section B – any four questions from this section**

**Q.1 – Orthographic projection.**

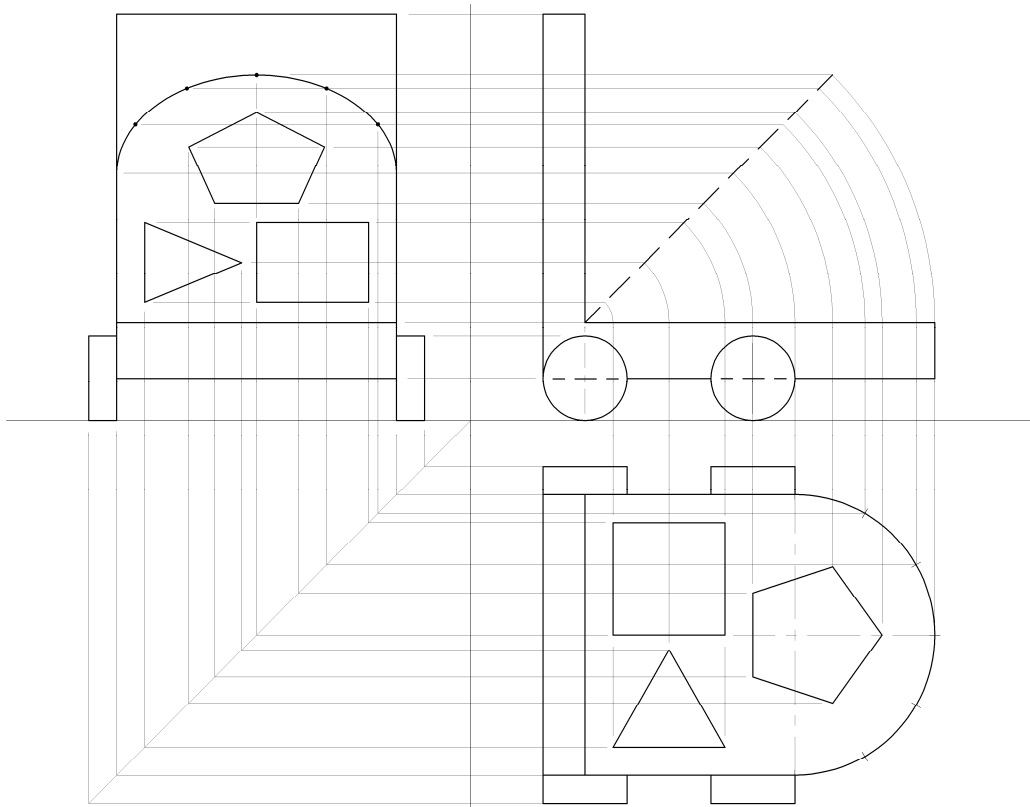


Elevation (15)		
6	Lines	
1	Inner recess	
2	Circular dispenser	
5	Front shelf	
1	Hidden detail	
Plan (21)		
7	Machine outline (5,2)	
1	Inner recess	
2	Dispenser	
3	Front shelf	
6	Elliptical curve: Points in elev, project to EV, project to plan, Draw (1,1,2,2)	
2	Hidden detail	
End View (16)		
7	Straight lines	
2	Dispenser	
3	Front shelf	
2	Rectangle	
2	Hidden detail	
True Shape (8)		
8	Rotate in plan	Project perpendicular
	Project from plan (3), project height (2), completion (3)	New xy line (3), transfer heights (2), completion (3)
<b>10</b>	<b>Drafting, accuracy, presentation</b>	

**Total Marks 70**



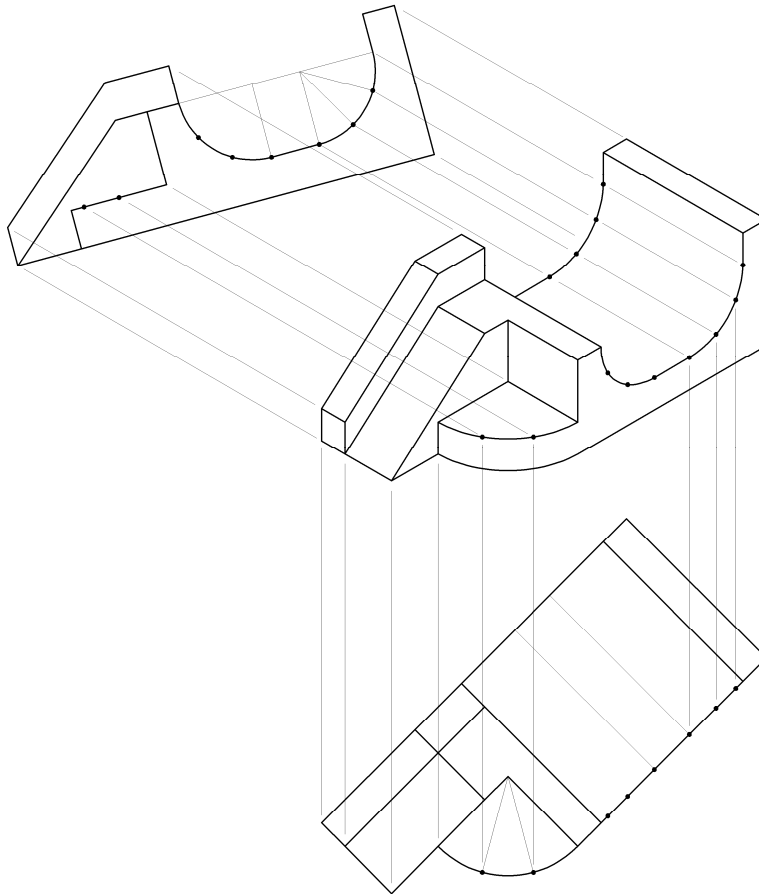
**Q.2 - Orthographic, Rotation, End View.**



<b>Given Elevation (12)</b>	
6	Outline and hidden detail
2	Wheels
4	45° angle (2), correct length (2)
<b>Given Plan (13)</b>	
3	Outline
4	Wheels
6	Square (2), triangle (2) pentagon (2)
<b>New Figure (35)</b>	
3	Projection of points to elevation
3	Rotation of points in elevation
3	Projections from plan to new figure in end view
3	Projections from elevation to new figure in end view
3	Outline of walker
4	wheels
6	Semi-elliptical curve
10	Square (2), triangle (3) pentagon (5)
<b>10</b>	<b>Drafting, accuracy, presentation</b>

**Total Marks 70**

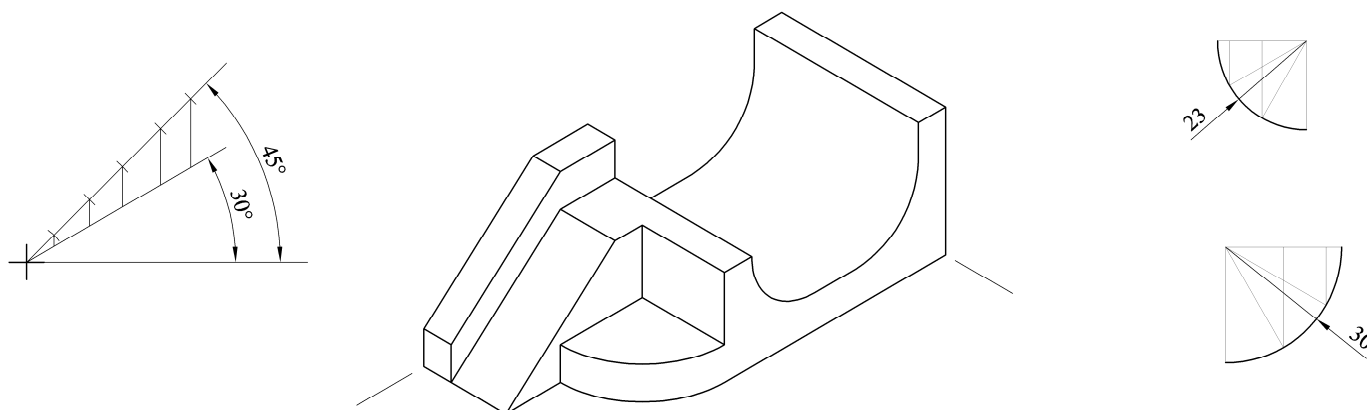
**Q.3 (a) - Isometric Projection (Axonometric Axes Method)**



<b>Axonometric Axes Method</b>	
<b>Elevation (15)</b>	
5	Half-pipe outline
5	Inner lines of half-pipe
5	Front quadrant
<b>Plan (11)</b>	
6	Half-pipe outline
1	Circular arc
4	Inner lines
<b>Completion of Isometric Projection (34)</b>	
5	Half-pipe outline
10	Internal of half-pipe
4	Sloping left side bottom
8	Sloping left side top
7	Cylindrical quadrant
<b>10</b>	<b>Drafting, accuracy, presentation</b>

**Total Marks 70**

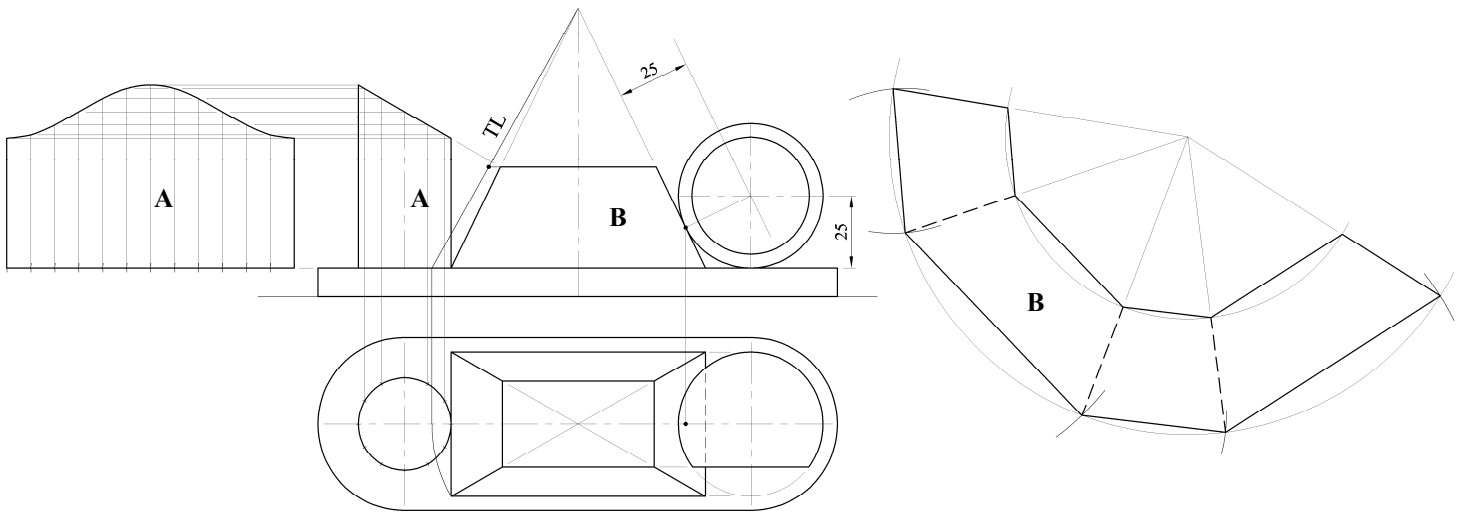
**Q.3 (b) - Isometric Projection (Isometric Scale Method)**



<b>Isometric Scale Method</b>	
<b>Isometric Scale (11)</b>	
4	Setting up isometric scale (2 marks for 30° line and 2 marks for 45° line)
4	Applying dimensions on 45° line
3	Projecting from 45° line onto 30° line
<b>Construction of half-pipe (9)</b>	
3	Apply measurements required for half-pipe
6	Construction required for arcs (3,3)
<b>Isometric Projection (6)</b>	
6	Direction of axes (2,2,2)
<b>Completion of Isometric Projection (34)</b>	
5	Half-pipe outline
10	Internal of half-pipe
4	Sloping left side bottom
8	Sloping left side top
7	Cylindrical quadrant
<b>10</b>	<b>Drafting, accuracy, presentation</b>

**Total Marks 70**

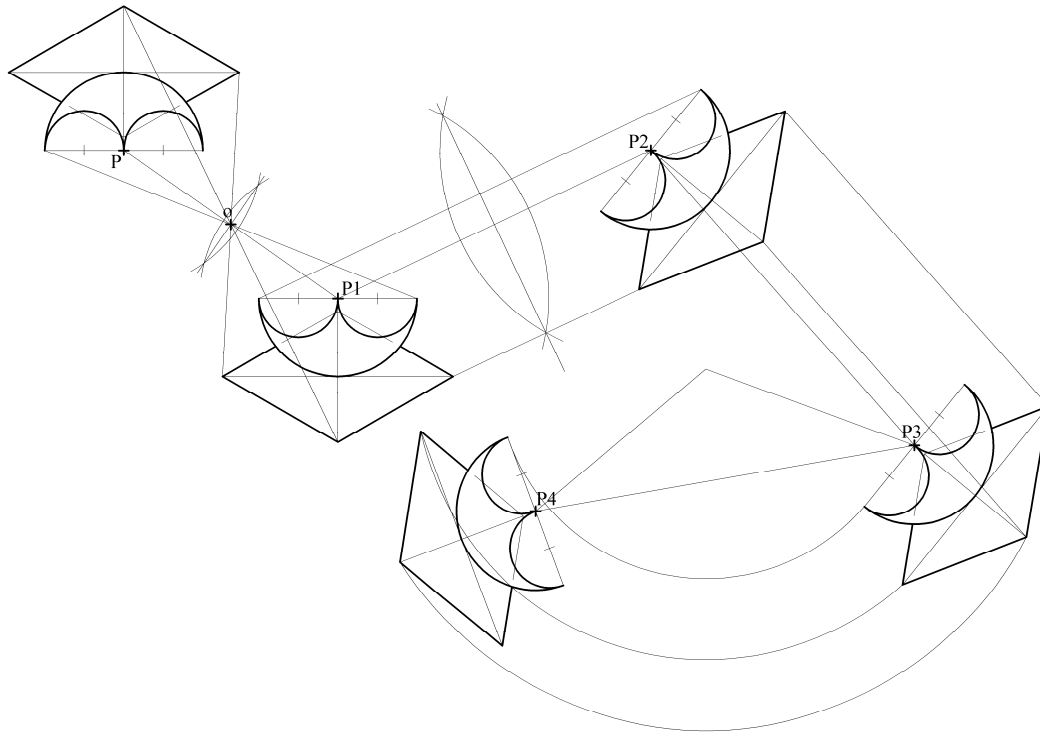
**Q.4 - Development**



<b>Plan (12)</b>	
1	Left side of base
2	Cylinder
3	Pyramid
4	Sphere: Project centre from elev. (1), POC (1), draw sphere (2)
2	Complete base
<b>Elevation (15)</b>	
2	Base
2	Truncated cylinder
3	Truncated pyramid
8	Sphere: Height of centre (1), locate centre (2), POC (1), draw sphere (4)
<b>Development of cylindrical surface (17)</b>	
6	Stepping out length of development (3 correct increment, 3 correct no.)
3	Projecting heights
3	Locate points
5	Drawing the required development
<b>Development of sloping surfaces of truncated pyramid (16)</b>	
2	Determine true length of edge
2	Swing arc of correct true length
4	Step out correct lengths on developed arc (2 correct lengths, 2 correct no.)
2	Swing arc equal to true length of truncated
6	Drawing the required development
<b>10</b>	<b>Drafting, accuracy, presentation</b>

**Total Marks 70**

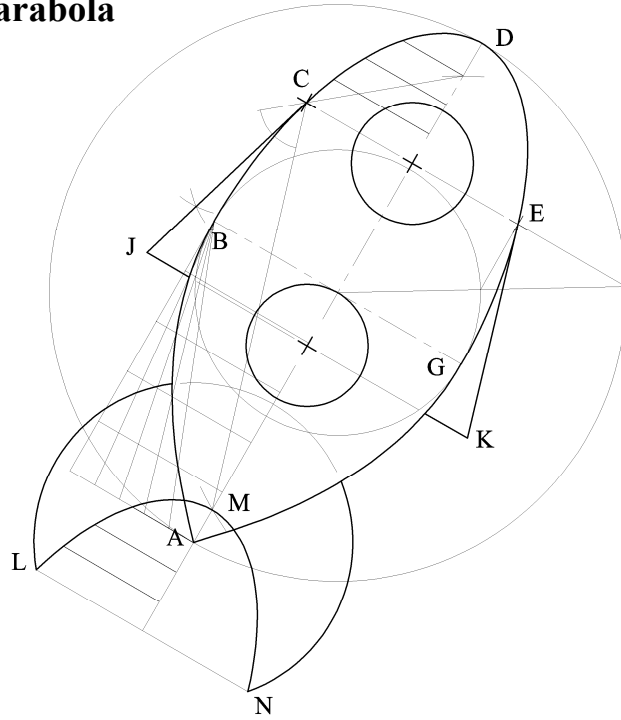
**Q.5 - Transformation Geometry**



<b>Setting up (8)</b>	
4	Construction outline
4	Complete Arcs (2,1,1)
<b>Central Symmetry (12)</b>	
4	Locate point <b>O</b> (2), Project lines through <b>O</b> (2)
4	Locating key image points.
4	Drawing the image figure accurately.
<b>Axial Symmetry (12)</b>	
4	Projecting perpendicular to symmetry line. (Deduct 2 marks if not perp.)
4	Locating key image points.
4	Drawing the image figure accurately.
<b>Translation (12)</b>	
4	Lines projected parallel to <b>P2 – P3</b>
4	Locating key image points
4	Drawing the image figure accurately
<b>Rotation (16)</b>	
4	Locating centre of rotation. (Joining <b>P3</b> to <b>P4</b> and applying 30° angle).
4	Drawing arcs
4	Locating key image points.
4	Drawing the image figure accurately.
<b>10</b>	<b>Drafting, accuracy, presentation</b>

**Total Marks 70**

**Q.6 - Ellipse and Parabola**



<b>Ellipse (22)</b>		
4	Draw major circle	
8	Identify (6) and draw (2) minor circle	
6	Locating additional points on the curve (2, 2, 2)	
4	Drawing the curve	
<b>Parabolas (12)</b>		
8	Construction to determine points on the parabola (2,2,2,2)	
4	Drawing of parabolas AB and GA	
<b>Tangents JC and EK (10)</b>		
2	Locate focal points	
2	Join $F_1CF_2$ or $F_1EF_2$	
2	Bisecting angle $F_1CF_2$ or $F_1EF_2$	
2	Draw tangents to points J and K.	
2	Completion of wingtips	
<b>Tail and Curve LMN (12)</b>		
2	Circular arc at tail	
4	Identify points LMN	
4	Identify ordinates for points on curve LMN (2,2)	Translate points parallel to DM
2	Draw the curve LMN	
<b>Completion (4)</b>		
4	Circular portholes	
<b>10</b>	<b>Drafting, accuracy, presentation</b>	

**Total Marks 70**