



# Coimisiún na Scrúduithe Stáit State Examinations Commission

S.40

## JUNIOR CERTIFICATE EXAMINATION 2006

Write your **EXAMINATION NUMBER** here.



### MUSIC – ORDINARY LEVEL

LISTENING, COMPOSING AND GENERAL STUDY (300 marks)

Wednesday, 21 June - Morning, 9.30 - 11.30

#### Don Fheitheoir

Stampa an Ionaid  
(Centre Stamp)

#### Don Scrúdaitheoir

Móriomlán  
na Marcanna

1. Suim na n-iomlán deireadh leathanaigh <b>Total of end of page totals</b>	
2. Móriomlán na gceisteanna/ceiste nár ceadáíodh <b>Aggregate total of all disallowed question(s)</b>	
3. An t-ollmharc cruinn a bronnadh (1 líne 2) <b>Total mark awarded (1 minus 2)</b>	
4. Breismharc do fhreagairt trí mheán na Gaeilge (más i gceist) <b>Bonus mark for answering through Irish (if applicable)</b>	
5. Marc iomlán má bronnadh breismharc do fhreagairt trí Ghaeilge (3+4) <b>Total mark awarded if Irish bonus (3+4)</b>	
<b>Nóta:</b> Caithfidh an marc i líne 3 (nó líne 5 má bronnadh breismharc do fhreagairt trí mheán na Gaeilge) a bheith cothrom leis an marc sa bhosca <b>Móriomlán</b> ar an script. <b>Note: The mark in row 3 (or row 5 if an Irish bonus is awarded) must equal the mark in the Móriomlán box on the script.</b>	

Ceist	Marc
1	
2	
3	
4	
5	
6	
7	
8	
Móriomlán	
Grád	

---

## GENERAL INSTRUCTIONS

- Before the examination begins, listen carefully to the test excerpt. If you cannot hear the recording clearly, speak to the superintendent now.*
  - Listen, also, for the warning pip and the announcement of each question on the recording.*
  - You may write your answers when you wish, either during a playing or during the pauses.*
  - Write all your answers in this **QUESTION-ANSWER BOOK** in the spaces provided.*
  - Use the blank pages at the back of the book for rough work.*
  - If, then, you need any extra paper or music manuscript, ask the superintendent.*
  - Do not bring any other papers into the examination hall.*
  - You may not make any comment, tap, hum or sing during the examination.*
-

---

## SPECIAL INSTRUCTIONS

- Answer ALL questions.
  - In statements where there is a choice, **circle or underline the one you think is correct.**
  - You will have FIVE minutes at the beginning to read Questions 1 to 6.
- 

### I - LISTENING

---

<b>Q.1</b>	<b>SET SONGS</b>	<b>30 marks</b>
------------	------------------	-----------------

---

- THREE excerpts, each played TWICE.
- Answer A, B and C.

**A Song 1**

- (i) The number in the title of this song is ... .. ■ 49                    ■ 59                    ■ 69
- (ii) The composer is ... .. ■ Handel                    ■ Brahms                    ■ Paul Simon
- (10)

**B Song 2**

- (i) Name this song. .... .. -----
- (ii) The form is ... .. ■ AABA                    ■ AABB                    ■ AABC
- (10)

**C Song 3**

- (i) This song comes from ... .. ■ Germany                    ■ Russia                    ■ England
- (ii) It is an example of ... .. ■ a work song                    ■ a religious song                    ■ a wedding song
- (10)

- You now have a short pause to complete your answer.
-

An excerpt from one of your set works will be played **THREE** times.

An outline of the music score is printed below.

**Fairly slowly (Andantino)**

Answer A, B, C and D.

- A** (i) This excerpt comes from ...  an overture  a cantata  a suite
- (ii) The composer, Rossini, is ...  German  Italian  American (6)
- B** (i) Bars 1–5 of the melody are played on ...  a violin  a cor anglais  a French horn
- (ii) The instrument belongs to the \_\_\_\_\_ family. (6)

- C** (i) In bars 6–10 the phrase is repeated. It sounds ... ..  lower  higher  at the same pitch
- (ii) The accompaniment has ...  plucked strings  soft brass  a drum roll (6)

- D** (i) The speed of the music in the excerpt (bars 1–20) ... ..  gets gradually faster  gets gradually slower  stays the same
- (ii) This helps to create an atmosphere of ... ..  unease  calm  anger (6)

Now listen to a later section, which is not printed here.

It will be played TWICE.

Answer E.

- E** (i) Which **one** of the following is heard in this excerpt? ... ..  a melody with an accompaniment
- a melody which is imitated
- two different melodies heard together

(ii) Give **one** reason for your choice.

-----

-----

-----

-----

(6)

There will now be a pause for you to complete your answer.

THREE excerpts, each played TWICE.

Answer A, B and C.

**Excerpt 1**

- A (i) This dance is ... .. ■ a jig                  ■ a reel                  ■ a hornpipe
- (ii) The number of beats in each bar is ... .. ■ 2                  ■ 3                  ■ 6                  (8)

**Excerpt 2**

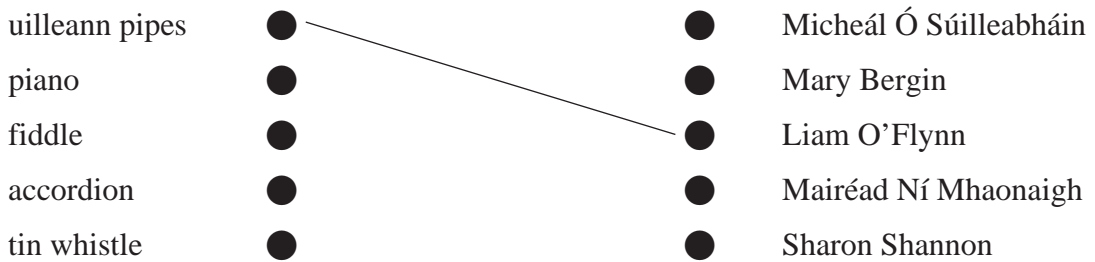
- B You will hear **three** features from the list below in this excerpt. Select any **two**. ... .. ■ unaccompanied ■ vocal ornamentation                  ■ broken chord accompaniment
- free rhythm                  ■ sung in Irish                  ■ a melody on the fiddle                  (8)

**Excerpt 3**

- C (i) This piece is based on ... .. ■ a march                  ■ a dance                  ■ an air
- (ii) Which **two** solo instruments are heard? ... .. ■ harp                  ■ uilleann pipes                  ■ accordion
- fiddle                  ■ tin whistle                  ■ bodhrán                  (12)

Now answer D. (There is no music on the recording here).

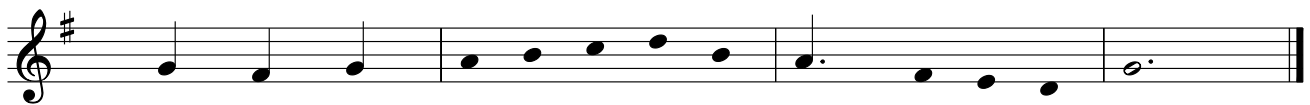
D Link these instruments with the performers by drawing a line from one to the other. The first one is done for you.



(12)

There will now be a pause for you to complete your answer.

- A FOUR-BAR PHRASE, played FIVE times on the piano.
- There will be an appropriate pause after each playing.
- The keynote 'DOH' and the TONIC chord will be sounded before each playing.
- You will hear the pulse on the metronome before and during the first two playings only.
- To help you, the first three notes and the outline of the melody are given.
- Answer A and B.



A Write in the TIME SIGNATURE. (4)

B Add stems and beams to complete the RHYTHM, where appropriate. (36)

- There will now be a long pause for you to complete your answer.

**Songs from Operas, Operettas,  
Cantatas, Oratorios and Stage Musicals**

- Answer A and B. (There is no music on the recording for these sections).

A (i) Name your CHOSEN SONG in this category. (Do NOT name your set song Spring here).

Chosen song: \_\_\_\_\_

(ii) Either state the work from which this song is taken or name the composer. \_\_\_\_\_ (4)

B Give one musical feature of this work.

\_\_\_\_\_ (4)

You will now hear a song from Miss Saigon.

It will be played TWICE.

Answer C and D.

- C** (i) This excerpt is sung by ... ..  a male voice  a female voice  male and female voices
- (ii) It is an example of ... ..  a solo  a duet  a trio (8)

- D** (i) The melody features ... ..  repeated notes  scales  big leaps
- (ii) The mood is ... ..  harsh  gentle  lively (8)

You will now hear another song from Miss Saigon.

It will be played TWICE.

Answer E.

- E** (i) Which of the following rhythms is heard throughout this excerpt?



- (ii) This music could best be described as ... ..  a chorus for male voices
- a part-song for male and female voices
- a male solo followed by a chorus (8)

You will now hear both excerpts again, each played ONCE only.

Answer F.

**F** Give **two** differences between the two songs.

- 1 \_\_\_\_\_
- 2 \_\_\_\_\_ (8)

There will now be a long pause for you to complete your answer.



## II - COMPOSING

**Q.6**

**TRIADS**

**40 marks**

- The verse below, played *ONCE* only.
- This is the last piece you will hear on the recording.
- Answer A, B, C and D.

### Desire for Spring

WA Mozart

**Merrily** (*Giocoso*)

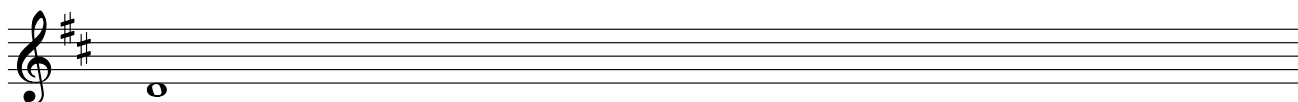
O love - ly May, I'm long - ing to see your smi - ling face, And  
thro' the woods and mea - dows your gen - tle steps \_ to trace; To  
find a - mong \_ the mos - ses the vio - let sweet \_ and blue, Or  
ten - der prim - rose blos - soms, with those \_ of dee - per hue.

- A What are the LETTER NAMES of the **three** notes at X? ... .. (12)
- B These notes form the triad of ... ■ A ■ G ■ F (10)
- C This triad is ... .. ■ major ■ minor (8)
- D Select ONE bar where the same triad fits the melody. ... .. ■ bar 3 ■ bar 6 ■ bar 14 (10)

Answer ONE - A or B or C.

**Preparation**

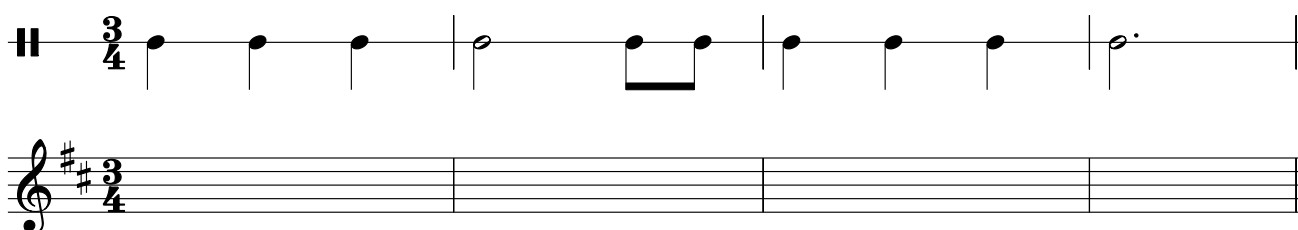
If you wish, write the scale of D on the staff below, beginning as indicated. This may help you to plan your answer to A, B or C.



**A A PHRASE SET TO A GIVEN RHYTHM**

Study this rhythm pattern.

Waltz



Now using the key of D, complete the melody as follows:

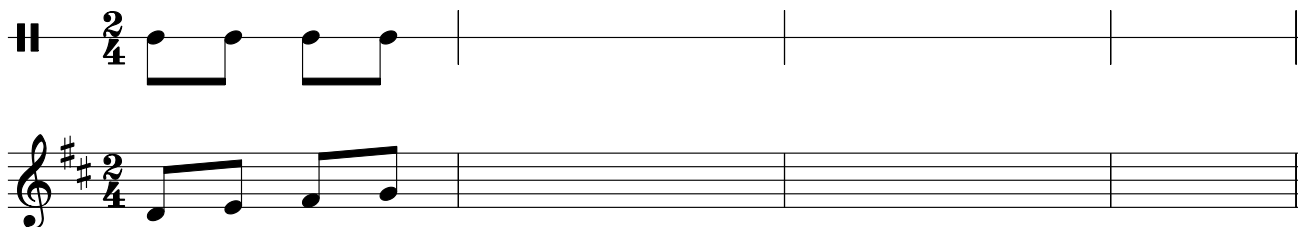
- 1 Compose your own MELODY to the given rhythm. (48)
- 2 End on the KEYNOTE, that is, 'DOH'. (6)
- 3 Add suitable PHRASING. (6)

OR

**B A PHRASE SET TO A GIVEN OPENING**

Study this opening.

Moderately



Now, using the key of D, complete the melody as follows:

- 1 Add THREE more bars of a rhythm pattern. (16)
- 2 Compose a MELODY to this rhythm. (32)
- 3 End on the KEYNOTE, that is, 'DOH'. (6)
- 4 Add suitable PHRASING. (6)

OR

C AN ANSWERING PHRASE

Study this opening phrase.

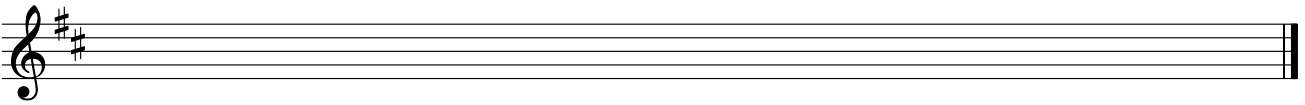
March



Rhythm



Melody



Now compose an **'answering' phrase** above to finish the melody. Use the key of D.  
Make your answering phrase **different** from the opening phrase, as follows:

- 1 Write a FOUR-BAR rhythm pattern. (16)
  - 2 Compose a MELODY to this rhythm. (32)
  - 3 End on the KEYNOTE, that is, 'DOH'. (6)
  - 4 Add suitable PHRASING. (6)
-

### III - GENERAL STUDY

Q.8

20 marks

Answer A, B and C.

Do NOT include pieces from your set songs, set works or Irish music here.

A (i) Name your **general study**. ... -----

(ii) To which category does it belong? ... ..

- day-to-day music
- modern art music
- the popular tradition
- ethnic music (other than Irish)
- medieval and renaissance music

(2)

B Give the titles and name the composers or performers of **two** pieces of music under this heading.

(i) Title: -----

Composer: -----

or

Performer: -----

(ii) Title: -----

Composer: -----

or

Performer: -----

(8)

C (i) Name **two** *musical* features of your general study, for example instruments, voices, melodies, form, rhythms, musical style, harmony, mood.

(ii) Write a brief note on each of them for your school magazine.

Musical feature 1: -----

Brief note: -----

-----  
-----  
-----  
-----  
-----  
-----

-----  
-----  
-----  
-----  
-----  
-----  
-----  
-----  
-----  
-----  
-----  
-----

(5)

**Musical feature 2:** -----

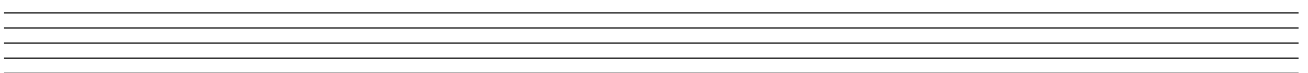
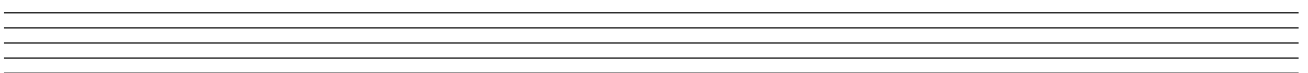
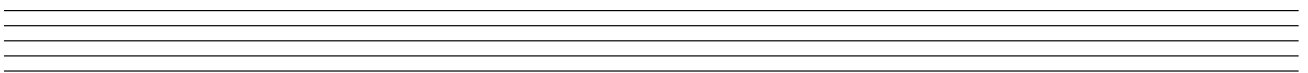
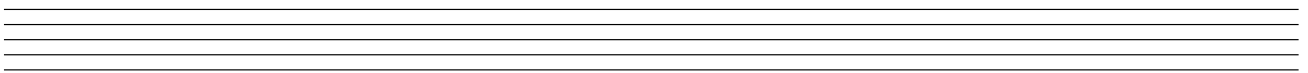
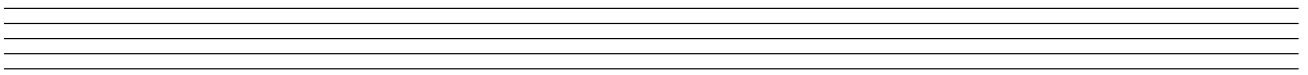
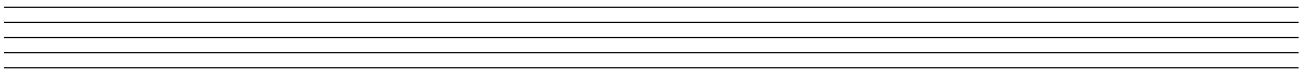
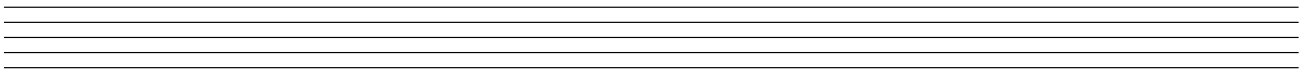
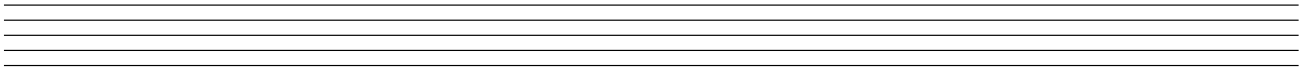
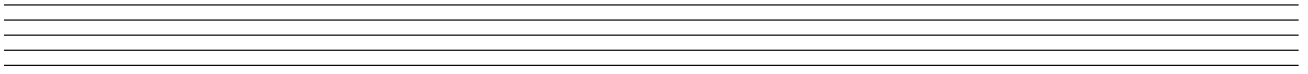
**Brief note:** -----

-----  
-----  
-----  
-----  
-----  
-----  
-----  
-----  
-----  
-----  
-----  
-----  
-----  
-----  
-----  
-----  
-----  
-----  
-----  
-----  
-----  
-----

(5)

# Rough Work

A series of 25 horizontal dashed lines for writing.



**Blank Page**