



Coimisiún na Scrúduithe Stáit
State Examinations Commission

LEAVING CERTIFICATE EXAMINATION, 2013

WRITE YOUR EXAMINATION NUMBER HERE 

MUSIC – ORDINARY LEVEL
COMPOSING (100 marks)
THURSDAY 20 JUNE – AFTERNOON 3.15–4.45

STAMPA AN IONAIID
(Centre Stamp)

DON SCRÚDAITHEOIR

Móriomlán
na marcanna

INSTRUCTIONS TO CANDIDATES

- Write your examination number, as required, in the box above.
 - Answer the questions in the spaces provided in this question-answer book.
 - You may use the spaces in the middle and at the end of the question-answer book for rough work.
-

CEIST	MARC			
1				
2				
3				
4				
5				
6				
IOM				
GRÁD				

1. Total of end of page totals	
2. Aggregate total of all disallowed questions	
3. Total mark awarded (1 minus 2)	

BLANK PAGE

Answer TWO questions – ONE from Section A (Melody Composition) and ONE from Section B (Harmony)

SECTION A – MELODY COMPOSITION (40 marks)

Answer ONE QUESTION ONLY in this section: Q1 or Q2 or Q3. Note that both Q1 and Q3 contain two sections.

Q.1 CONTINUATION OF A GIVEN OPENING

In the case of both (a) and (b),

- Continue the given opening to make an eight-bar melody, ending on the keynote, that is, doh.
- Add appropriate phrasing and expression marks to the melody.
- Choose a suitable instrument for each of your melodies from the list given.

(a) flute violin clarinet descant recorder

Moderato

The musical notation for the Moderato section (a) consists of a single staff in 4/4 time with a key signature of one flat (Bb). The melody begins with a dotted quarter note on G4, followed by an eighth note on A4, a quarter note on Bb4, and a quarter note on C5. The second bar contains a quarter note on Bb4, a quarter note on A4, a quarter note on G4, and a quarter note on F4. The third bar contains a quarter note on E4, a quarter note on D4, a quarter note on C4, and a quarter note on B3. The fourth bar contains a quarter note on A3, a quarter note on G3, a quarter note on F3, and a quarter note on E3. The fifth bar contains a quarter note on D3, a quarter note on C3, a quarter note on B2, and a quarter note on A2. The sixth bar contains a quarter note on G2, a quarter note on F2, a quarter note on E2, and a quarter note on D2. The seventh bar contains a quarter note on C2, a quarter note on B1, a quarter note on A1, and a quarter note on G1. The eighth bar contains a quarter note on F1, a quarter note on E1, a quarter note on D1, and a quarter note on C1.

An empty musical staff in 4/4 time with a key signature of one flat (Bb), intended for the continuation of the melody.

AND

(b) trumpet violin oboe clarinet

Allegretto

The musical notation for the Allegretto section (b) consists of a single staff in 3/4 time with a key signature of two sharps (D major). The melody begins with a quarter note on D4, followed by a quarter note on E4, a quarter note on F#4, and a quarter note on G4. The second bar contains a quarter note on A4, a quarter note on B4, a quarter note on C5, and a quarter note on B4. The third bar contains a quarter note on A4, a quarter note on G4, a quarter note on F#4, and a quarter note on E4. The fourth bar contains a quarter note on D4, a quarter note on C4, a quarter note on B3, and a quarter note on A3. The fifth bar contains a quarter note on G3, a quarter note on F3, a quarter note on E3, and a quarter note on D3. The sixth bar contains a quarter note on C3, a quarter note on B2, a quarter note on A2, and a quarter note on G2. The seventh bar contains a quarter note on F2, a quarter note on E2, a quarter note on D2, and a quarter note on C2. The eighth bar contains a quarter note on B1, a quarter note on A1, a quarter note on G1, and a quarter note on F1.

An empty musical staff in 3/4 time with a key signature of two sharps (D major), intended for the continuation of the melody.

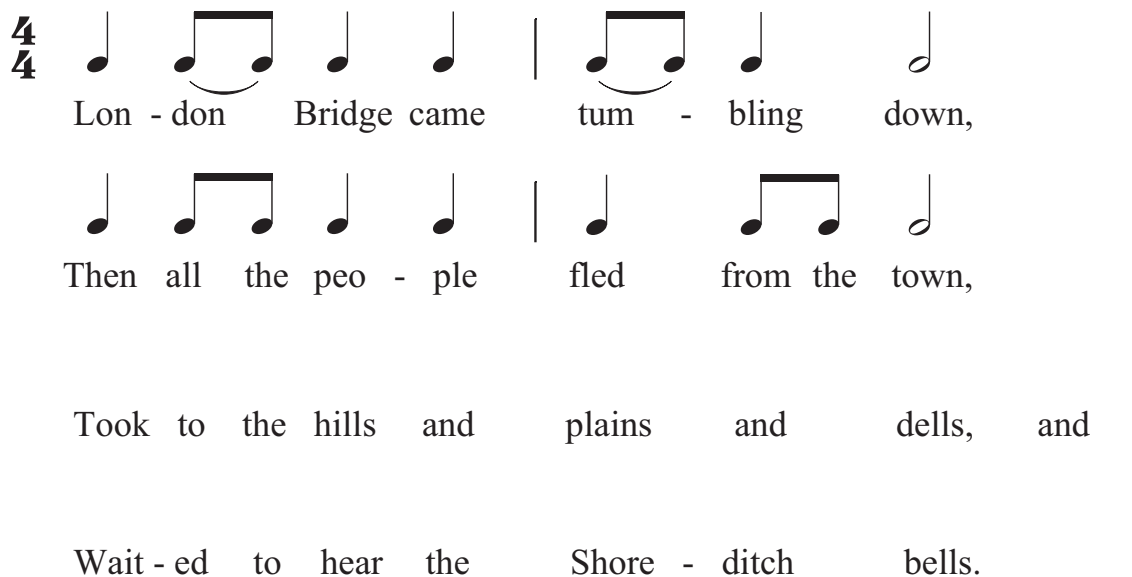
Q.2 SETTING MUSIC TO A GIVEN TEXT

Answer (a) *and* (b).

Here is an extract from *A Rhyme* by an anonymous poet.

London Bridge came tumbling down,
 Then all the people fled the town,
 Took to the hills and plains and dells,
 And waited to hear the Shoreditch bells.

- (a) • The first two lines have been set to a rhythm. Compose a rhythm to fit the remaining words.

$\frac{4}{4}$ 


Lon - don Bridge came tum - bling down,

Then all the peo - ple fled from the town,


Took to the hills and plains and dells, and

Wait - ed to hear the Shore - ditch bells.

- (b) • Using this rhythm, compose a melody of eight bars, beginning as indicated and ending on the key note, that is, doh.
 • Add appropriate phrasing and expression marks to the melody.

$\frac{4}{4}$ 

Lon - don Bridge came tum - bling down,



Q.3 COMPOSING TO A GIVEN DANCE RHYTHM OR METRE OR FORM

Answer (a) *and* (b).

(a) Study this opening of a march.

- Complete the first phrase.
- Compose an answering phrase, ending on the keynote, that is, doh.
- Add appropriate phrasing and expression marks to the melody.
- Choose a suitable instrument for your melody from the following list:

oboe clarinet violin horn

Moderato

AND

(b) Study this opening of a minuet.

- Complete the first phrase.
- Compose an answering phrase, ending on the keynote, that is, doh.
- Add appropriate phrasing and expression marks to the melody.
- Choose a suitable instrument for your melody from the following list:

clarinet flute violin oboe

Andante

AND

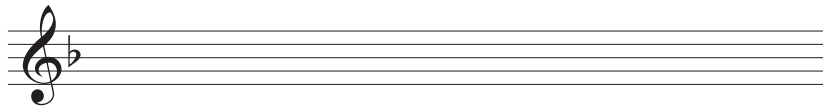
SECTION B – HARMONY (60 marks)

Answer ONE QUESTION ONLY in this section: Q4 or Q5 or Q6

Q.4 COMPOSING MELODY AND BASS NOTES FROM A SET OF CHORDS

PREPARATORY WORK

- Write out the scale of F major on the staff below:

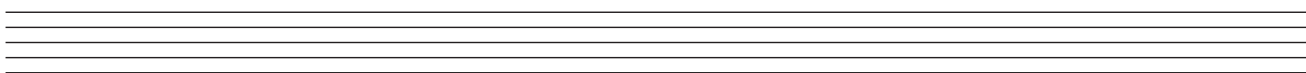
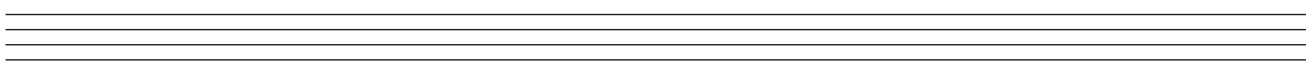
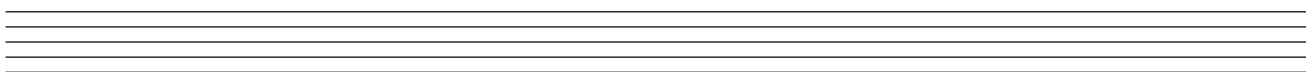


- Plot the chords available in this key (I, ii, IV, V and vi) either in the chord bank grid *or* on the staff below. The first chord is given.

Notes of chord	C A F		E C A				B \flat G E
Chord symbol	F		Am				E \dim
Roman numeral	I	ii	iii	IV	V	vi	vii



ROUGH WORK



• Study the piece of music below.

• Using the given rhythms, add melody and bass notes to complete each phrase with cadence and approach chords as follows:

(i) At A, an INTERRUPTED cadence with approach chord (ii—V—vi)

(ii) At B, an IMPERFECT cadence with approach chord (IV—I—V)

(iii) At C, a PLAGAL cadence with approach chord (vi—IV—I)

(iv) At D, a PERFECT cadence with approach chord (IV—V—I)

Exercise A: A musical score in 3/4 time, key of B-flat major. The first two measures are filled with notes: Treble clef (B4, D5, E5, F5) and Bass clef (B2, D3, E3, F3). The third measure is empty, with a bracket above it labeled 'A' and three quarter notes (B4, D5, E5) indicating the rhythm to be added.

Exercise B: A musical score in 3/4 time, key of B-flat major. The first two measures are filled with notes: Treble clef (B4, D5, E5, F5) and Bass clef (B2, D3, E3, F3). The third measure is empty, with a bracket above it labeled 'B' and three quarter notes (B4, D5, E5) indicating the rhythm to be added.

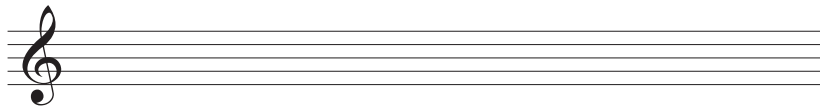
Exercise C: A musical score in 3/4 time, key of B-flat major. The first two measures are filled with notes: Treble clef (B4, D5, E5, F5) and Bass clef (B2, D3, E3, F3). The third measure is empty, with a bracket above it labeled 'C' and three quarter notes (B4, D5, E5) indicating the rhythm to be added.

Exercise D: A musical score in 3/4 time, key of B-flat major. The first two measures are filled with notes: Treble clef (B4, D5, E5, F5) and Bass clef (B2, D3, E3, F3). The third measure is empty, with a bracket above it labeled 'D' and three quarter notes (B4, D5, E5) indicating the rhythm to be added.

Q.5 ADDING BASS NOTES AND CHORD INDICATIONS AT CADENCE POINTS

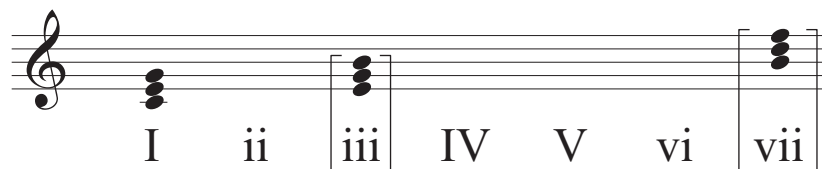
PREPARATORY WORK

- Write out the scale of C major on the staff below:

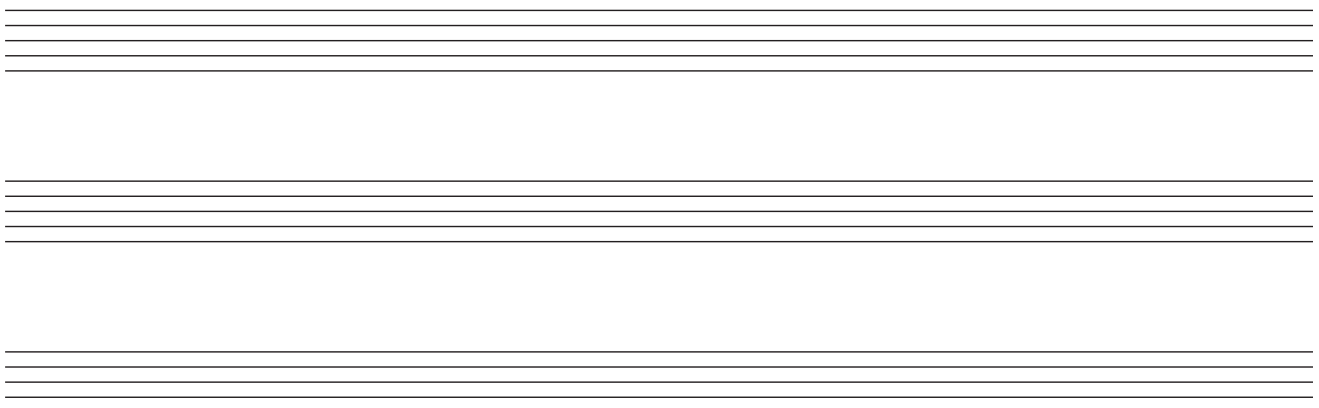


- Plot the chords available in this key (I, ii, IV, V and vi) either in the chord bank grid *or* on the staff below. The first chord is given.

Notes of chord	G E C		B G E				F D B
Chord symbol	C		Em				B ^{dim}
Roman numeral	I	ii	iii	IV	V	vi	vii



ROUGH WORK



- Study the piece of music below.
- Add suitable bass notes and chord indications to complete the cadences at A, B, C and D.
- You may use either chord symbols *or* Roman numerals, but not both.

A

B

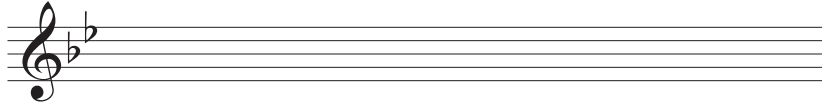
C

D

Q.6 ADDING DESCANT NOTES AND CHORD INDICATIONS AT CADENCE POINTS

PREPARATORY WORK

- Write out the scale of B \flat major on the staff below:

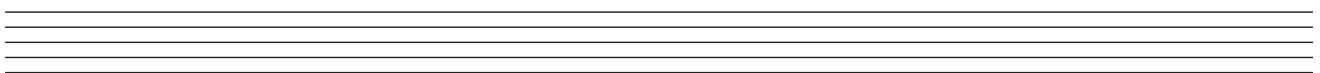
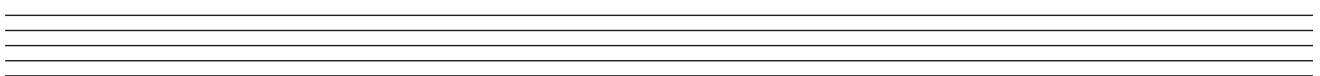
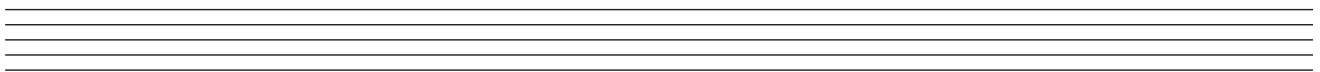


- Plot the chords available in this key (I, ii, IV, V and vi) either in the chord bank grid *or* on the staff below. The first chord is given.

Notes of chord	F D B \flat		A F D				E \flat C A
Chord symbol	B \flat		Dm				A ^{dim}
Roman numeral	I	ii	iii	IV	V	vi	vii



ROUGH WORK



- Study the piece of music below.
- Complete the phrase endings by adding suitable chords and descant notes at A, B, C and D.
- You may use either chord symbols *or* Roman numerals, but not both.

A

Descant

Melody

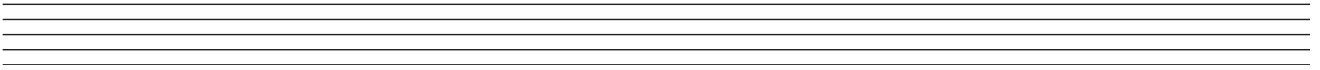
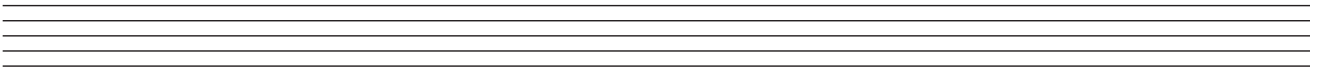
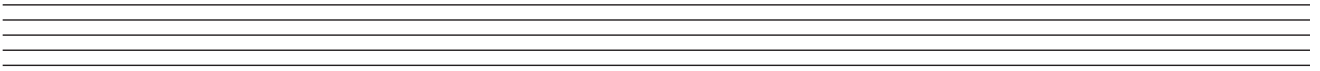
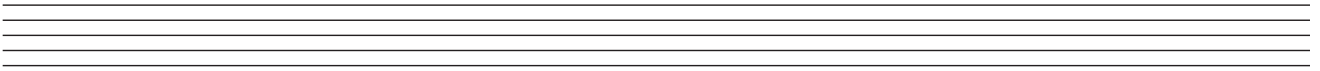
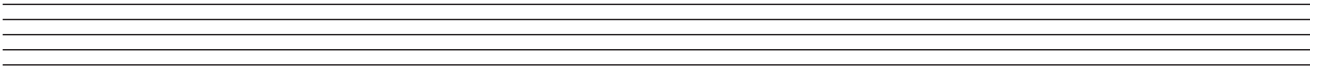
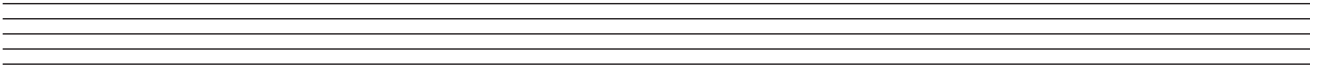
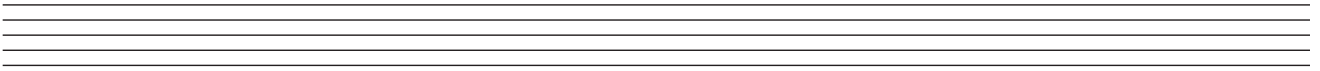
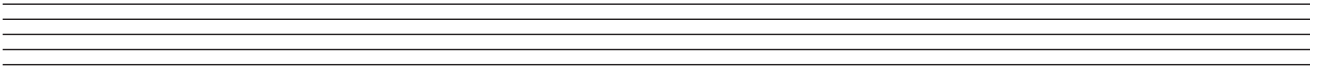
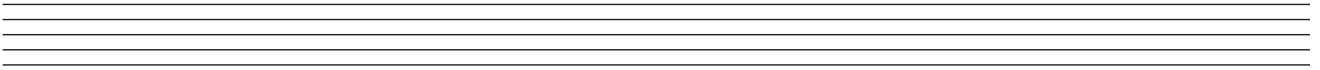
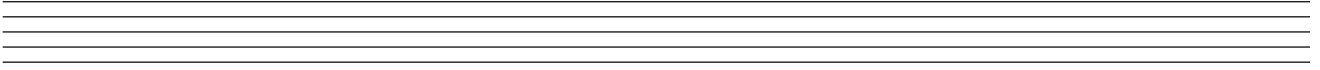
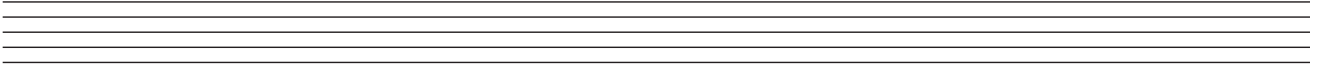
Bass

B

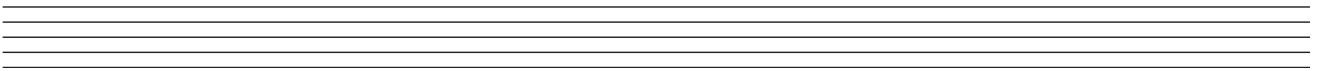
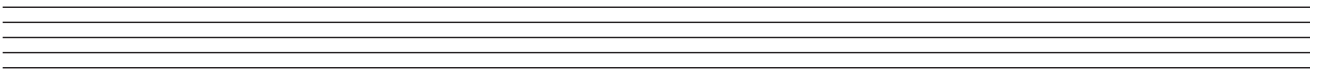
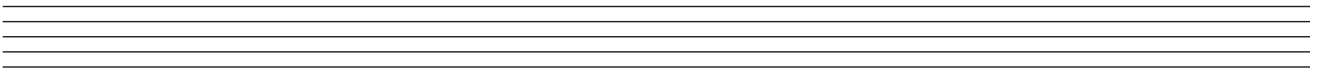
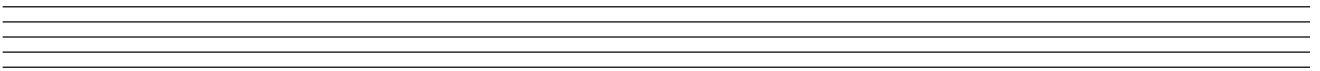
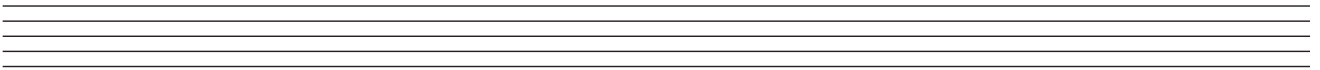
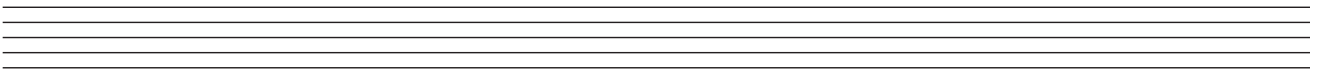
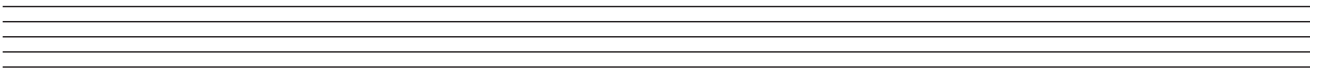
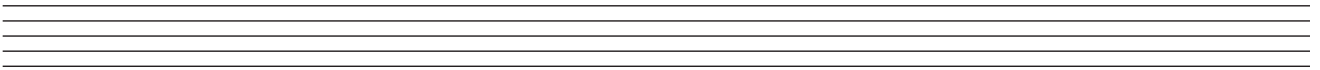
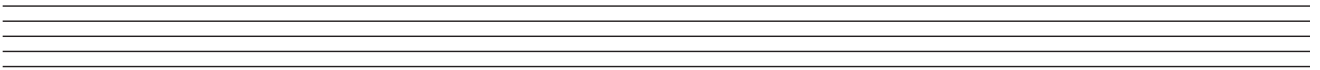
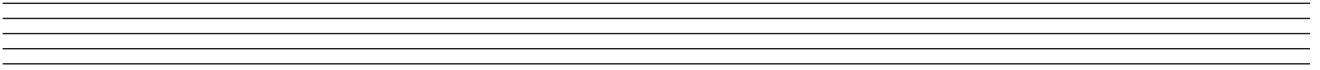
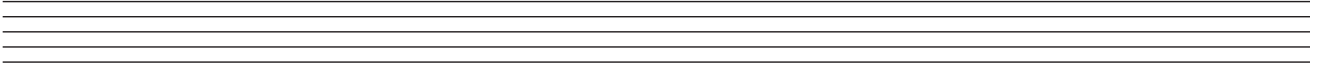
C

D

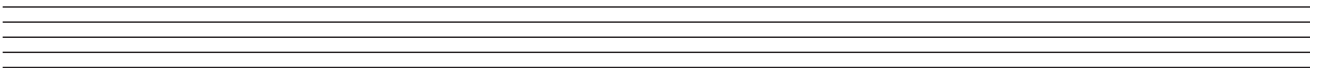
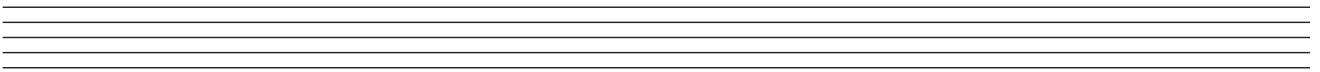
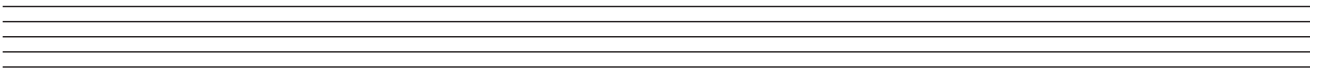
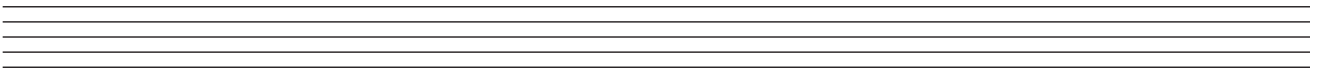
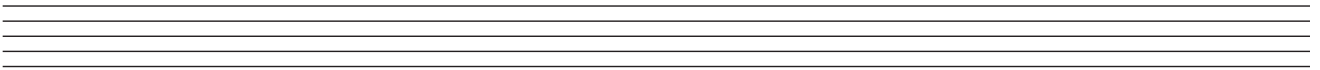
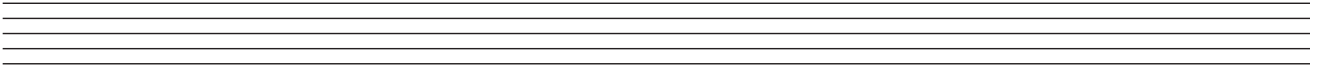
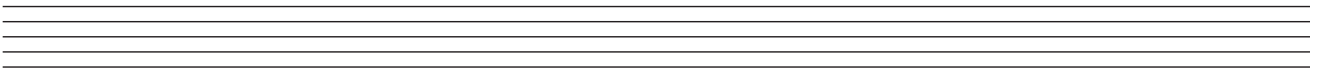
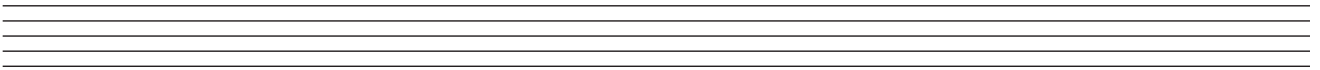
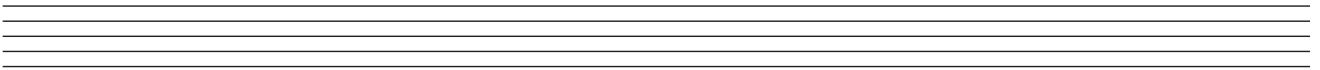
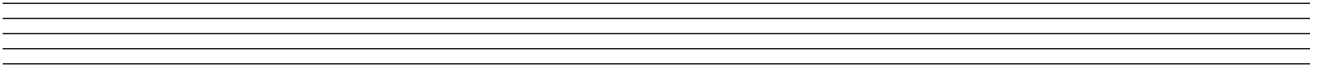
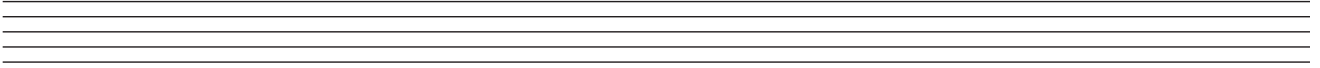
ROUGH WORK



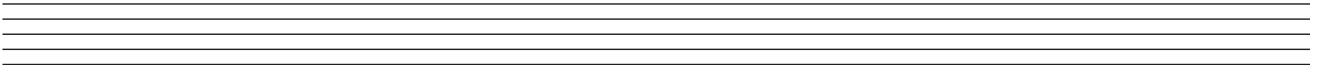
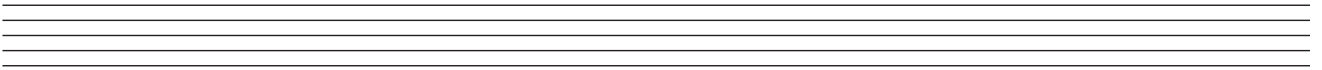
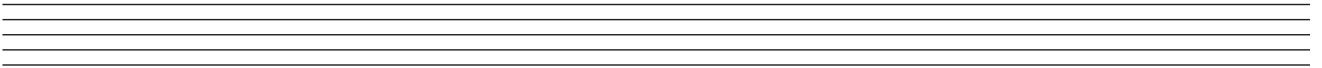
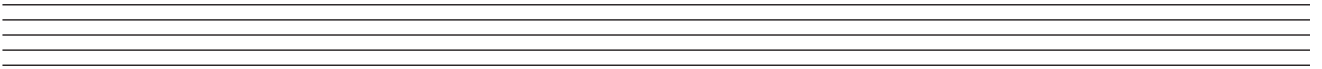
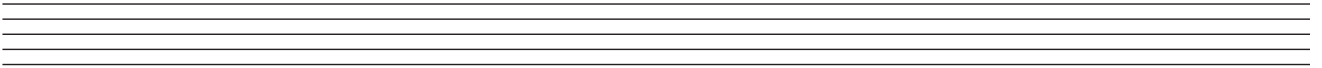
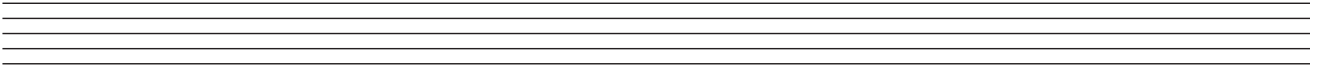
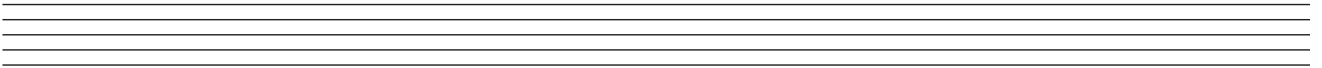
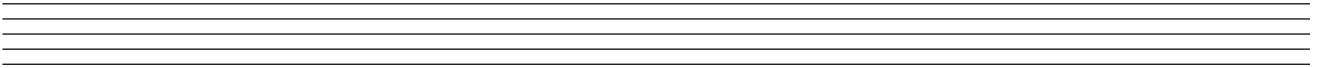
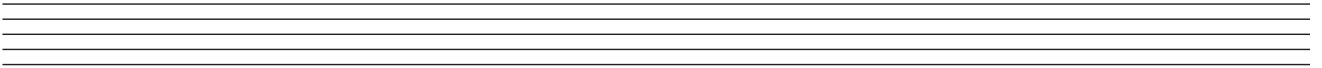
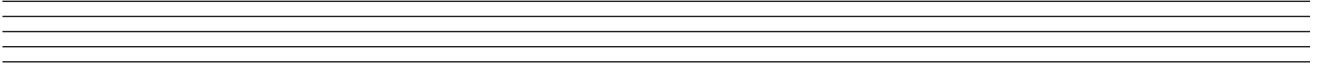
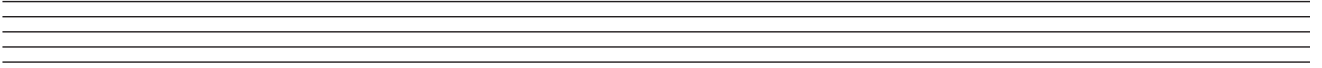
ROUGH WORK



ROUGH WORK



ROUGH WORK



BLANK PAGE