



Coimisiún na Scrúduithe Stáit
State Examinations Commission

LEAVING CERTIFICATE EXAMINATION 2007

WRITE YOUR EXAMINATION NUMBER HERE 

MUSIC – HIGHER LEVEL
COMPOSING (100 marks)
THURSDAY 21 JUNE – AFTERNOON, 2.00 to 3.30

STAMPA AN IONAIID
(Centre Stamp)

Móriomlán na
Marcanna

DON SCRÚDAITHEOIR

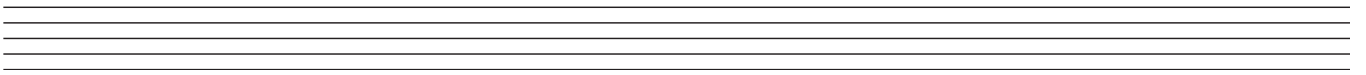
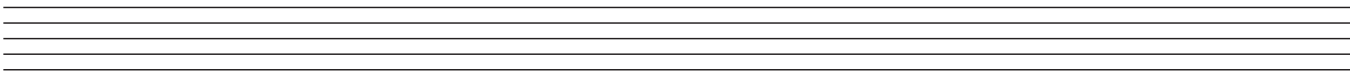
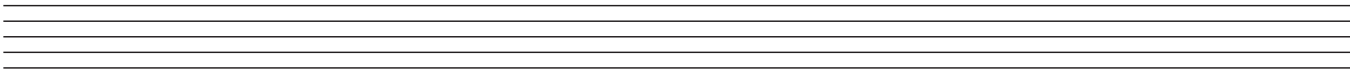
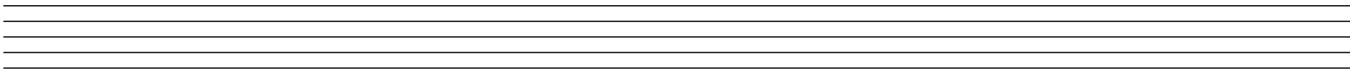
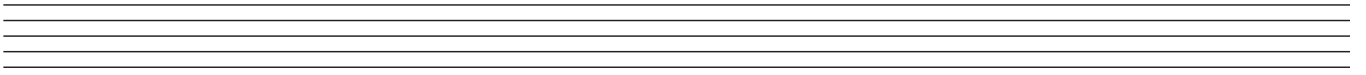
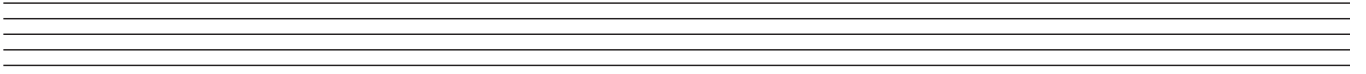
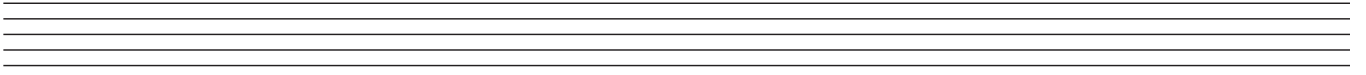
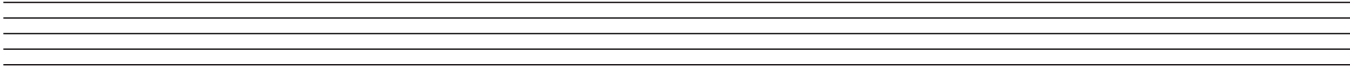
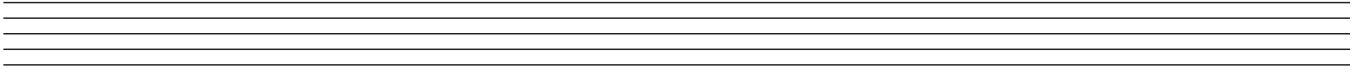
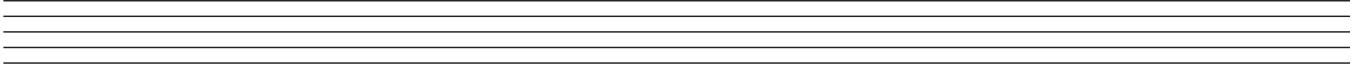
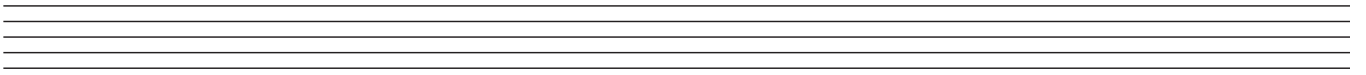
CEIST	MARC
1	
2	
3	
4	
5	
6	
MÓRIOMLÁN	
GRÁD	

INSTRUCTIONS TO CANDIDATES

- Write your examination number, as required, in the box above.
 - Answer the questions in the spaces provided in this question-answer book.
 - You may use the spaces in the middle and at the end of the question-answer book for rough work.
-

1. Total of end of page totals	
2. Aggregate total of all disallowed questions	
3. Total mark awarded (1 minus 2)	

ROUGH WORK



SECTION A – MELODY COMPOSITION (40 marks)

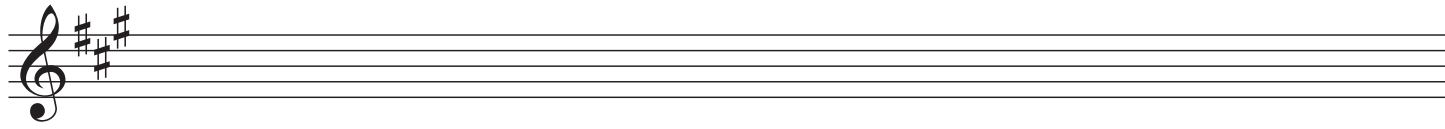
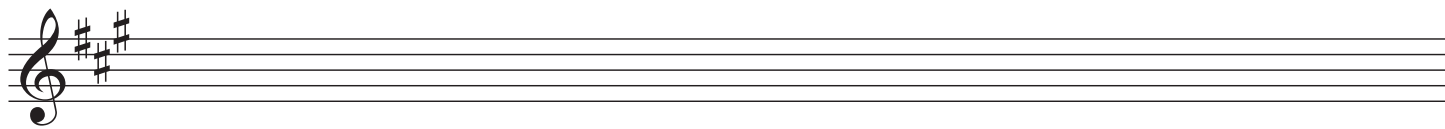
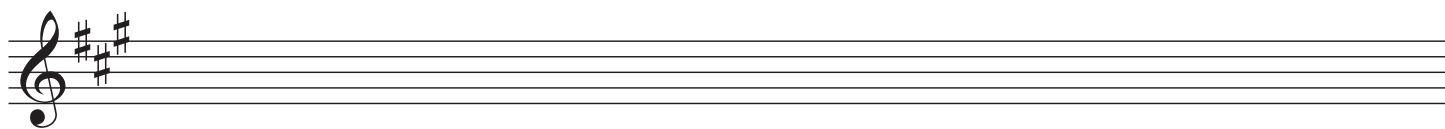
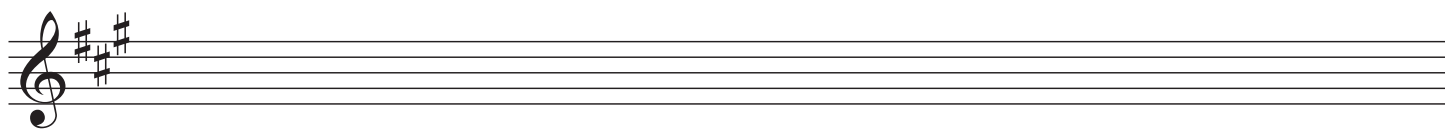
Answer ONE QUESTION ONLY in this section: Q1 or Q2 or Q3

Q.1 CONTINUATION OF A GIVEN OPENING

- Continue the opening below to make a 16–bar melody.
- Include a modulation to the dominant at a suitable point.
- Add appropriate performing directions (phrasing and dynamics) to the melody.
- Choose a suitable instrument for your melody from the following list:

flute violin oboe horn

Moderato



Q.2 SETTING MUSIC TO A GIVEN TEXT

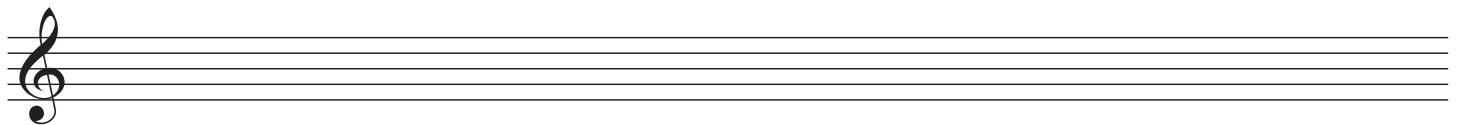
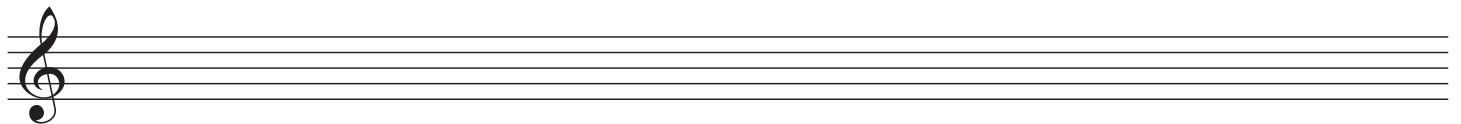
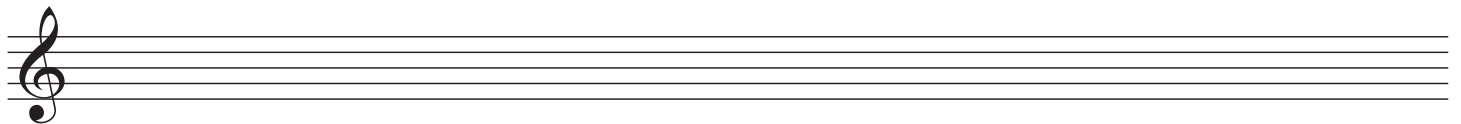
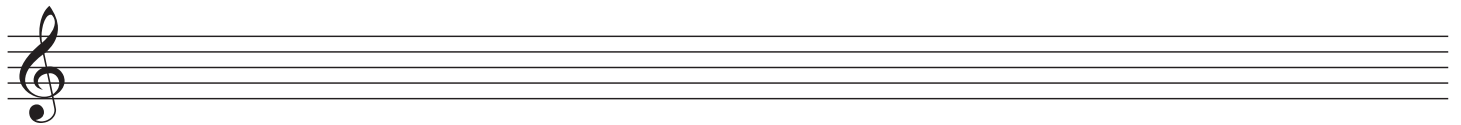
Here is an excerpt from *Stopping By Woods on a Snowy Evening* by Robert Frost.

Whose woods these are I think I know
His house is in the village though;
He will not see me stopping here
To watch his woods fill up with snow.

- The opening line has been set to music below.
- Set the remaining words to make a melody of 16 bars. (You may exceed this number of bars, and include a modulation, if you wish.)
- Add appropriate performing directions (phrasing and dynamics) to the melody.

Andante

Whose woods these are I think ___ I ___ know_



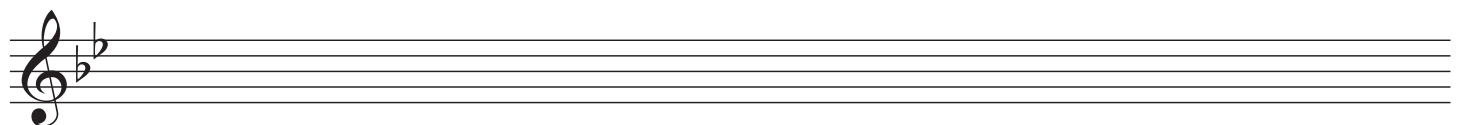
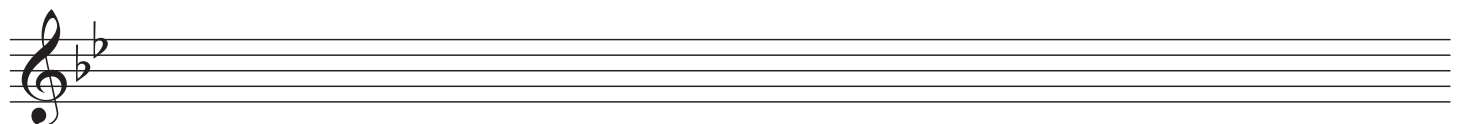
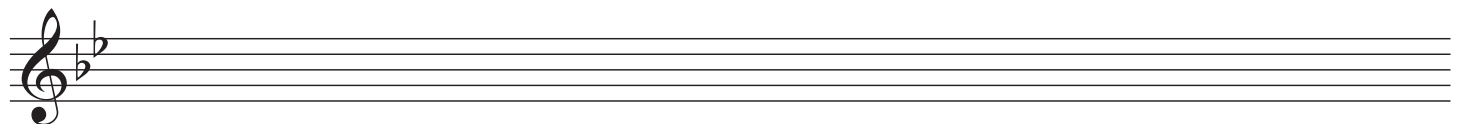
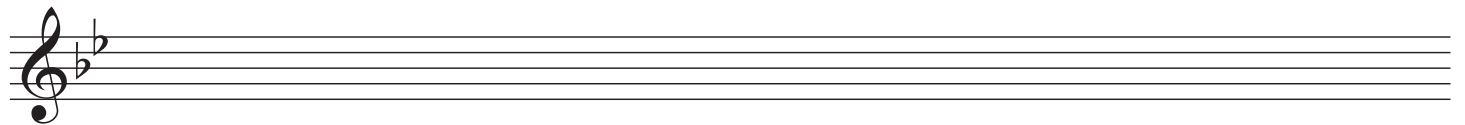
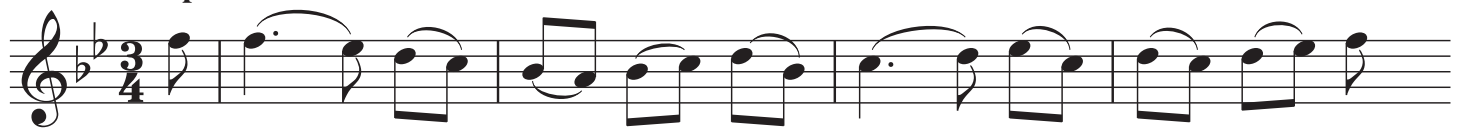
Q.3 COMPOSING TO A GIVEN DANCE RHYTHM OR METRE OR FORM

The opening phrase of a minuet is given below.

- Continue the given opening to make a 16-bar melody.
- Use the form AA¹BA².
- Include a modulation to the dominant at a suitable point.
- Add appropriate performing directions (phrasing and dynamics) to the melody.
- Choose a suitable instrument for your melody from the following list:

flute oboe piccolo violin

Tempo di minuetto



SECTION B – HARMONY (60 marks)

Answer ONE QUESTION ONLY in this section: Q4 or Q5 or Q6

Q.4 COMPOSING MELODY AND BASS NOTES FROM A SET OF CHORDS

PREPARATORY WORK

- Plot the chords available in the key of E \flat major, either in the chord bank grid *or* on the staff below.

Notes of chord	B \flat		D				A \flat
	G		B \flat				F
	E \flat		G				D
Chord symbol	E \flat		Gm				D \dim
Roman numeral	I	ii	iii	IV	V	vi	vii

A musical staff in the key of E \flat major (two flats) showing seven chord symbols: I, ii, iii, IV, V, vi, vii. The iii, vii, and D \dim chords are enclosed in boxes. Above the staff, the notes of each chord are indicated by dots on the staff lines: I (B \flat , G, E \flat), ii (D, B \flat , G), iii (D, B \flat , G), IV (F, D, B \flat), V (G, E \flat , B \flat), vi (F, D, B \flat), vii (A \flat , F, D).

ROUGH WORK

Four sets of empty musical staves for rough work, each consisting of a treble clef staff and a bass clef staff.

B	
BQ	
MEL	

• Study the following piece of music.

• Using the chords indicated, compose melody and bass notes to complete the piece in the given style.

Moderato

Chords: $E\flat$, $B\flat/D$, Cm , $A\flat$, $B\flat$

$E\flat$ $B\flat$ Cm $A\flat$ Fm $A\flat$ $B\flat$

Cm $A\flat$ Fm $B\flat/D$ $E\flat$ $B\flat$ Cm

$E\flat$ $E\flat/G$ $A\flat$ $B\flat$ Fm $B\flat7$ $E\flat$

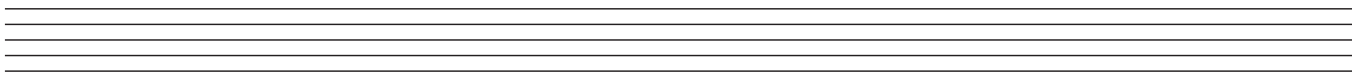
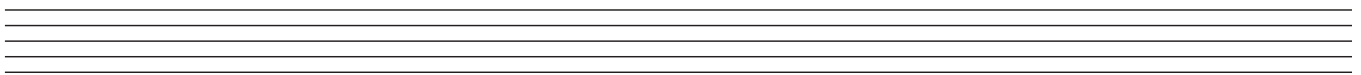
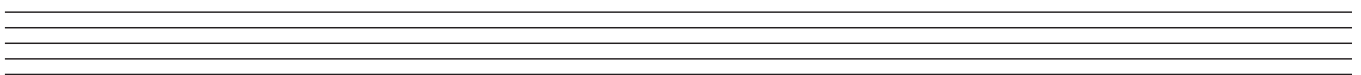
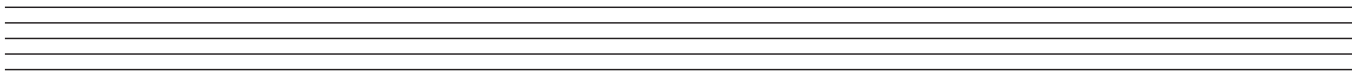
Q.5 COMPOSING BASS NOTES AND CHORD INDICATIONS TO A GIVEN TUNE

PREPARATORY WORK

- Plot the chords available in the key of D major, either in the chord bank grid *or* on the staff below.

Notes of chord	A F# D		C# A F#				G E C#
Chord symbol	D		F#m				C#dim
Roman numeral	I	ii	iii	IV	V	vi	vii

ROUGH WORK



C	
CH Q	
B	
BQ	

Study the following piece and insert suitable bass notes and chord indications in the style of the given opening.

- Do *not* repeat the same chord *in the same position* in adjacent boxes.
- You may use chord symbols or Roman numerals, but not both.
- If you choose Roman numerals, use *lower case* for *minor* chords.

Moderato

Chord symbols shown in the first system: I, D, vi, Bm

Q.6 ADDING A COUNTERMELODY OR DESCANT AND CHORDAL SUPPORT TO A GIVEN TUNE

PREPARATORY WORK

- Plot the chords available in the key of D minor, either in the chord bank grid *or* on the staff below.

Notes of chord	A F D		C# A F				G E C#
Chord symbol	Dm		F ^{aug}				C# ^{dim}
Roman numeral	i	ii	III	iv	V	VI	vii

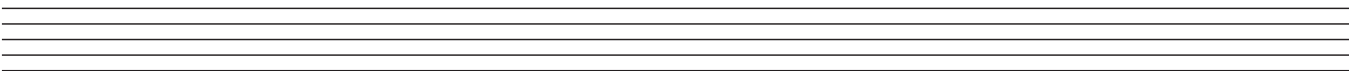
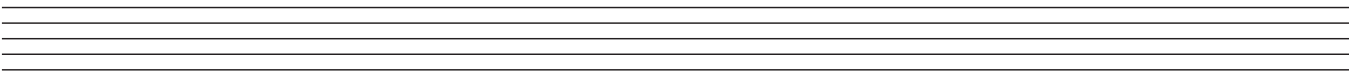
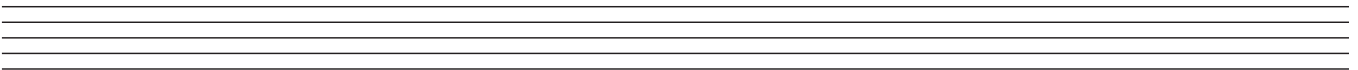
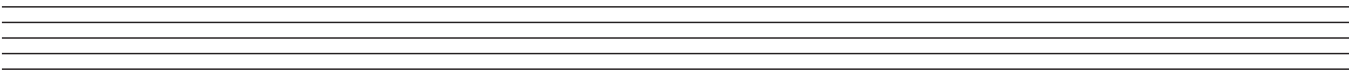
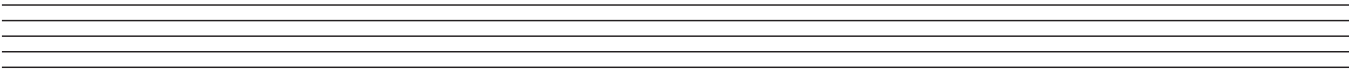
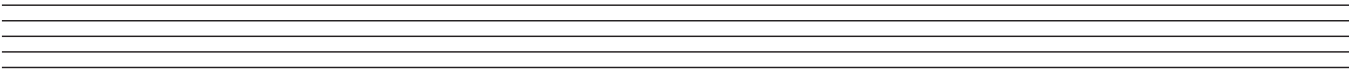
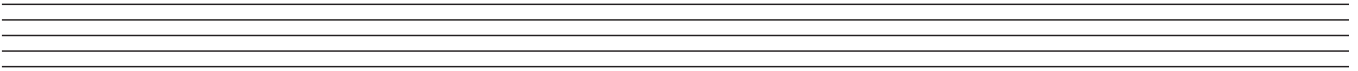
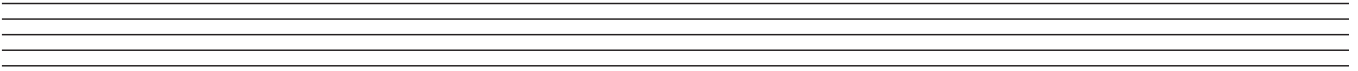
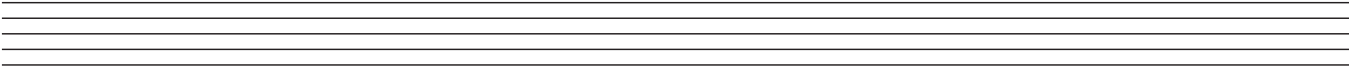
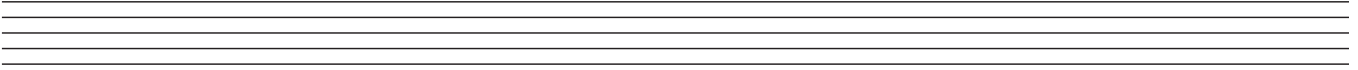
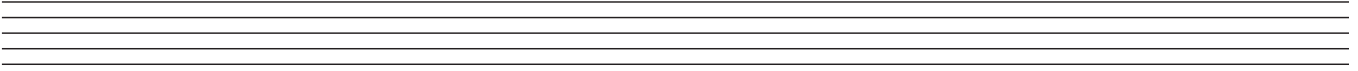
ROUGH WORK

CH	
CAD	
DESC	

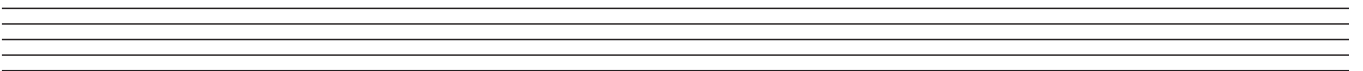
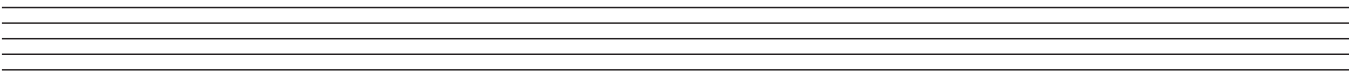
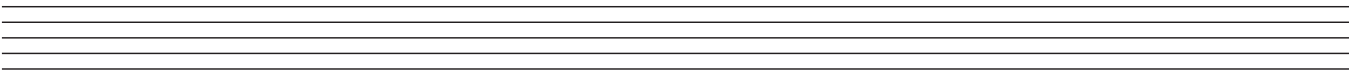
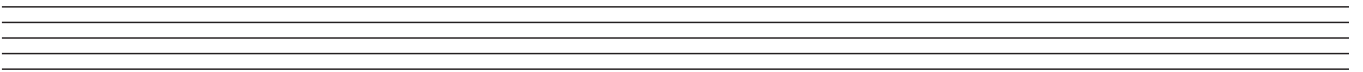
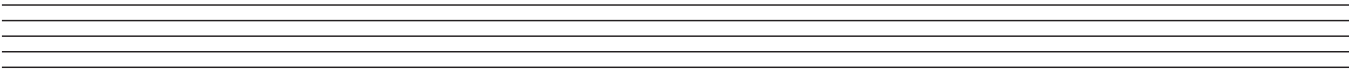
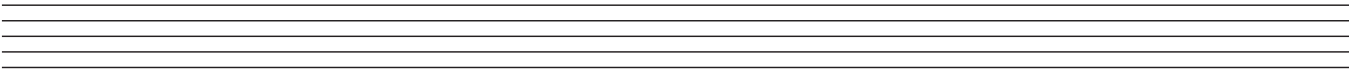
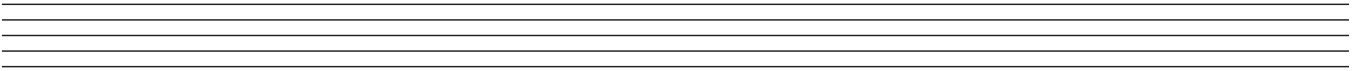
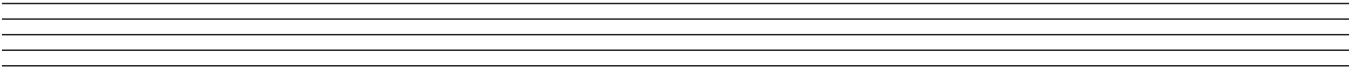
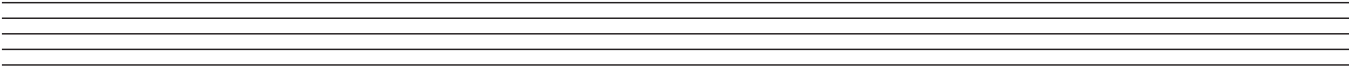
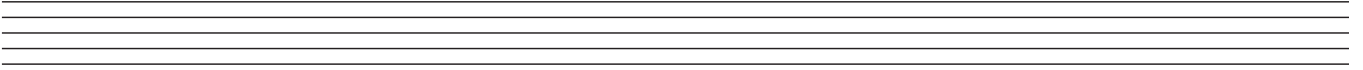
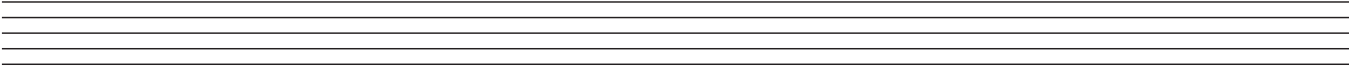
- Study the following piece of music.
- Insert suitable chord indications in the boxes provided and continue the descant part in the given style to complete the piece.
- You may use either chord symbols or Roman numerals, but not both.
- If you choose Roman numerals, use *lower case* for *minor* chords.
- Do not repeat the same chord *in the same position* in adjacent boxes.

Chord boxes: i ib i iv V
Dm Dm/F Dm Gm A

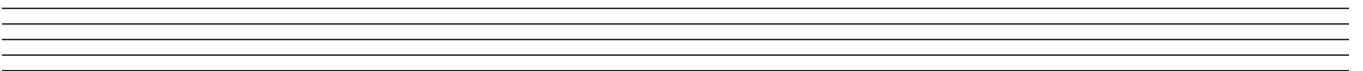
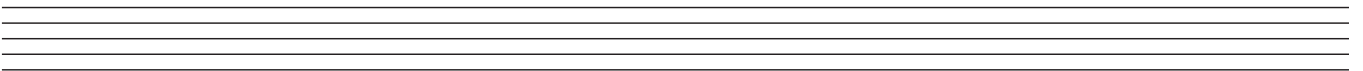
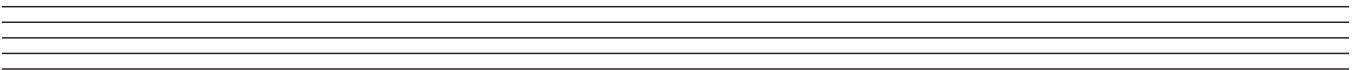
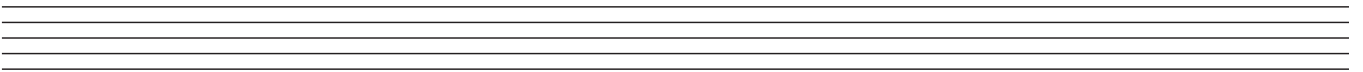
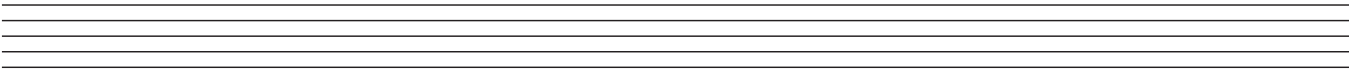
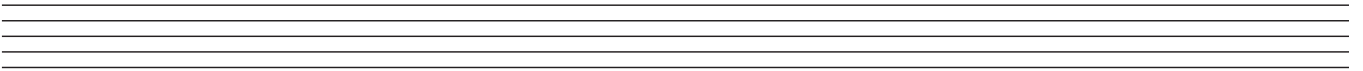
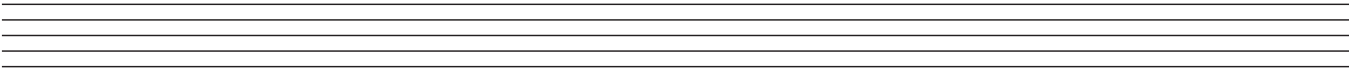
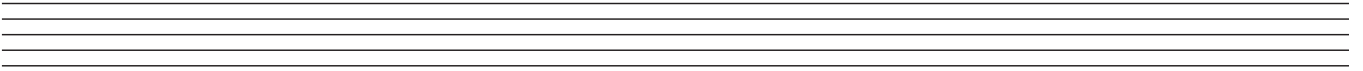
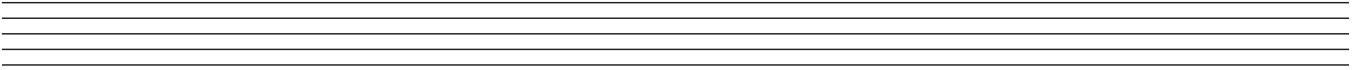
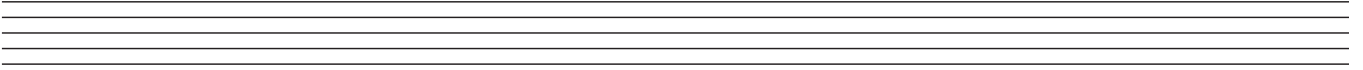
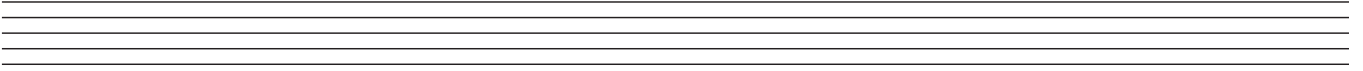
ROUGH WORK



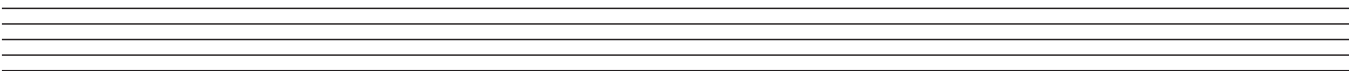
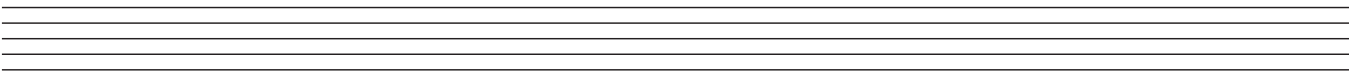
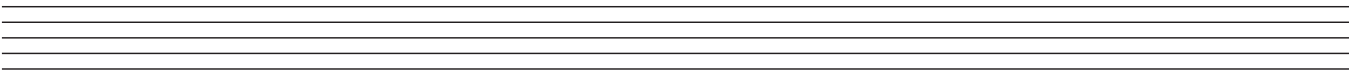
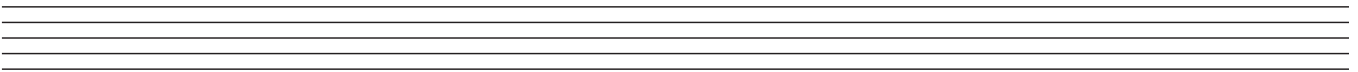
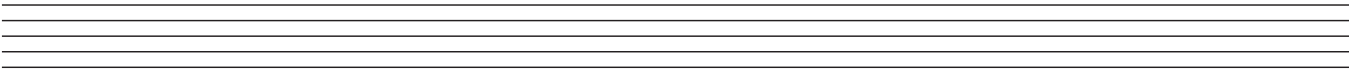
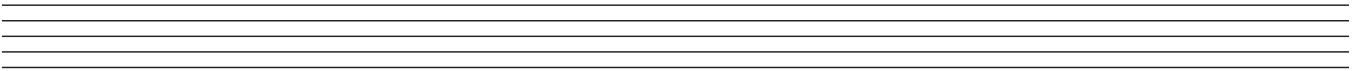
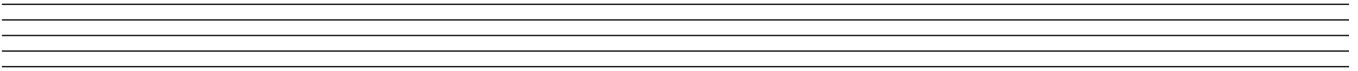
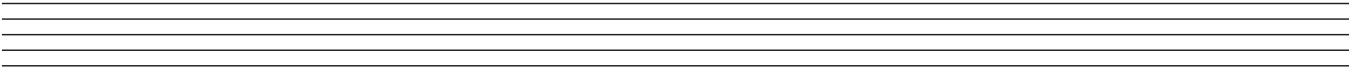
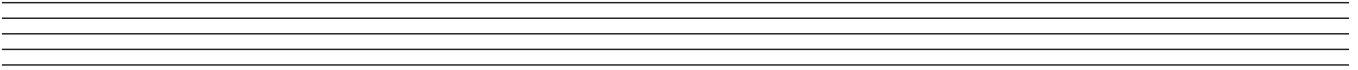
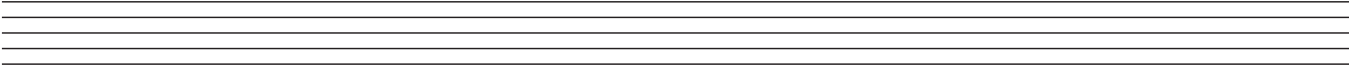
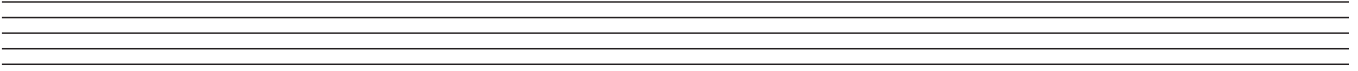
ROUGH WORK



ROUGH WORK



ROUGH WORK



BLANK PAGE