



Coimisiún na Scrúduithe Stáit
State Examinations Commission

LEAVING CERTIFICATE EXAMINATION, 2016

WRITE YOUR EXAMINATION NUMBER HERE 

MUSIC – ORDINARY LEVEL
COMPOSING (100 marks)
THURSDAY 23 JUNE – AFTERNOON 3.15–4.45

CENTRE STAMP

FOR THE EXAMINER

Total marks

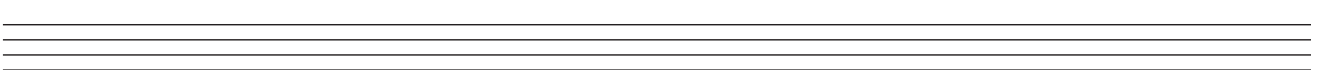
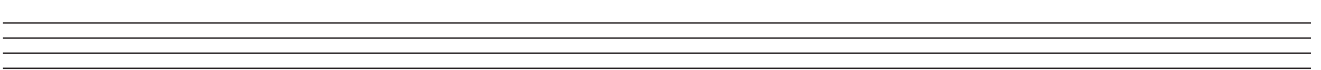
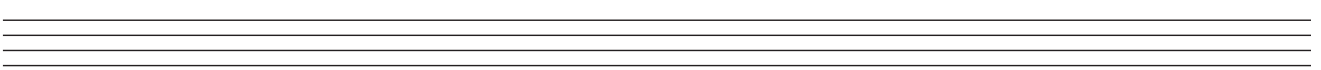
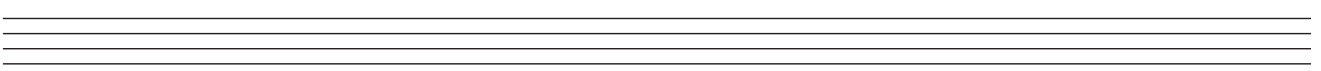
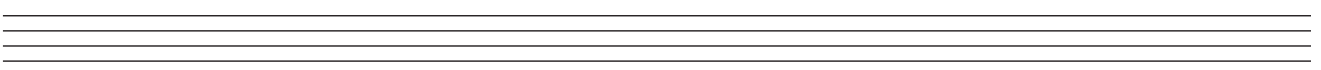
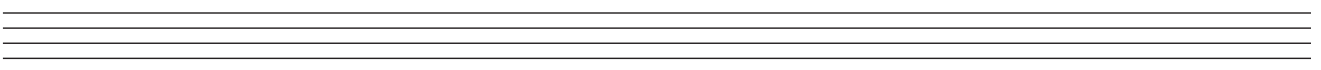
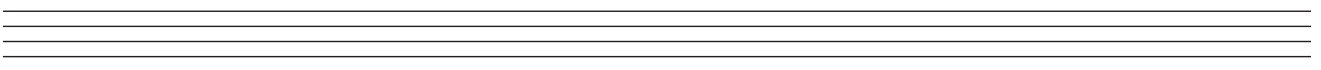
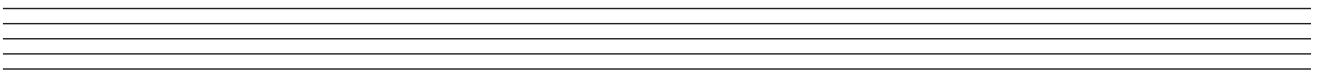
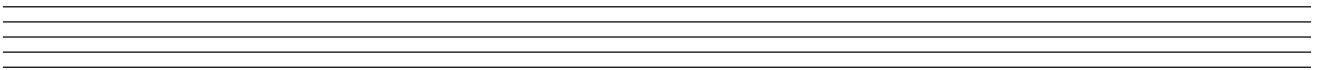
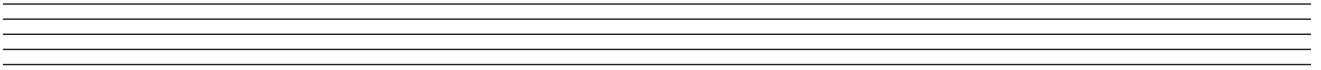
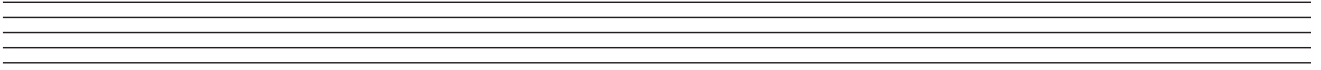
QUESTION	MARK			
1				
2				
3				
4				
5				
6				
TOTAL				
GRADE				

INSTRUCTIONS TO CANDIDATES

- Write your examination number in the box above.
 - Answer the questions in the spaces provided in this answer book.
 - Use the blank staves throughout the answer book for roughwork.
-

1. Total of end of page totals	
2. Aggregate total of all disallowed questions	
3. Total mark awarded (1 minus 2)	

ROUGH WORK



SECTION A – MELODY COMPOSITION (40 marks)

Answer ONE QUESTION ONLY in this section: Q1 or Q2 or Q3.

Q.1 CONTINUATION OF A GIVEN OPENING

Answer (a) and (b).

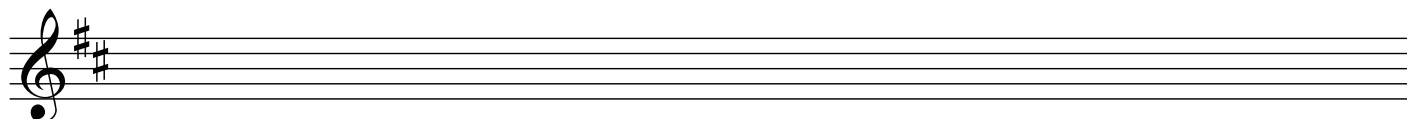
- (a)
- Continue the given opening to make an eight-bar melody, ending on the keynote, that is, doh.
 - Add appropriate phrasing and expression marks to the melody.
 - Choose a suitable instrument for your melody from the following list:

flute oboe trumpet violin

Allegretto



A musical staff in treble clef with a key signature of one sharp (F#) and a 3/4 time signature. The notation shows the first two bars of a melody: the first bar contains a quarter note on G4, a quarter note on A4, and a quarter note on B4; the second bar contains a quarter note on C5, a quarter note on B4, and a quarter note on A4.



An empty musical staff in treble clef with a key signature of one sharp (F#).

AND

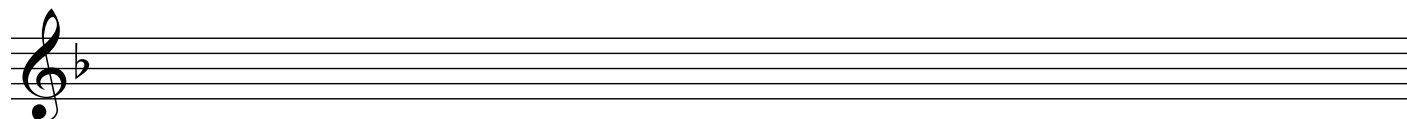
- (b)
- Continue the given opening to make an eight-bar melody, ending on the keynote, that is, doh.
 - Add appropriate phrasing and expression marks to the melody.
 - Choose a suitable instrument for your melody from the following list:

clarinet violin flute trumpet

Moderato



A musical staff in treble clef with a key signature of one flat (Bb) and a 4/4 time signature. The notation shows the first two bars of a melody: the first bar contains a quarter note on G4, a quarter note on A4, a quarter note on B4, and a quarter note on C5; the second bar contains a quarter note on B4, a quarter note on A4, a quarter note on G4, and a quarter note on F4.



An empty musical staff in treble clef with a key signature of one flat (Bb).

Q.2 SETTING MUSIC TO A GIVEN TEXT

Answer (a) *and* (b).

Here is an extract from the poem *The Fair-Haired Girl* (Anonymous).

The sun has set, the stars are still,
 The red moon hides behind the hill;
 The tide has left the brown beach bare,
 The birds have fled the upper air.

- (a) • The first two lines have been set to a rhythm. Compose a rhythm to fit the remaining words.

4/4 ♩ | ♩ ♩ ♩. ♩ | ♩♩ ♩♩ ♩ ♩ |
 The sun has set, the stars_ are__ still, The

 ♩ ♩ ♩. ♩ | ♩ ♩ ♩ ♩ |
 red moon hides be - hind the hill; The

 tide has left the brown beach bare, The

 birds have fled the up - per air.

- (b) • USING THIS RHYTHM, continue the opening below to make a melody of eight bars.
 • End on the keynote, that is, doh.
 • Write the words under the notes.
 • Add appropriate phrasing and expression marks to the melody.

4/4 ♩ | ♩ ♩ ♩. ♩ | ♩♩ ♩♩ ♩ ♩ |
 The sun has set, the stars_ are__ still, The

Q.3 COMPOSING TO A GIVEN DANCE RHYTHM OR METRE OR FORM

Answer (a) *and* (b).

- (a)
- Study this opening of a march.
 - Continue the given opening to make an eight-bar melody, ending on the keynote, that is, doh.
 - Add appropriate phrasing and expression marks to the melody.
 - Choose a suitable instrument for your melody from the following list:

clarinet flute violin descant recorder

Moderato



AND

- (b)
- Study this opening of a waltz.
 - Continue the given opening to make an eight-bar melody, ending on the keynote, that is, doh.
 - Add appropriate phrasing and expression marks to the melody.
 - Choose a suitable instrument for your melody from the following list:

oboe descant recorder flute violin

Moderato



(40)

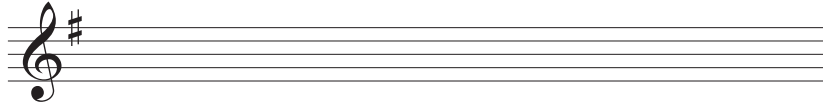
SECTION B – HARMONY (60 marks)

Answer ONE QUESTION ONLY in this section: Q4 or Q5 or Q6.

Q.4 COMPOSING MELODY AND BASS NOTES FROM A SET OF CHORDS

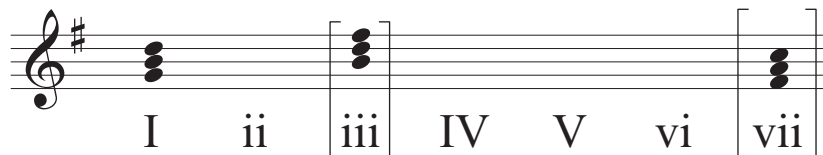
PREPARATORY WORK

- Write out the scale of G major on the staff below:

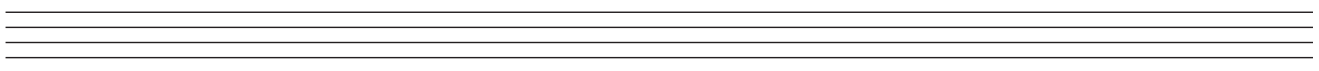
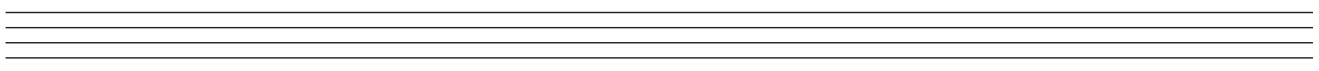
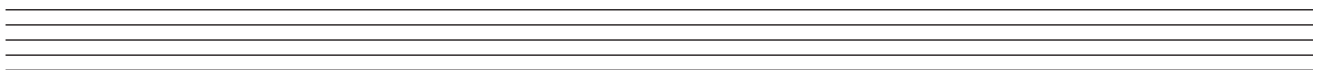


- Plot the chords available in this key (I, ii, IV, V and vi) either in the chord bank grid *or* on the staff below. The first chord is given.

Notes of chord	D B G		F# D B				C A F#
Chord symbol	G		Bm				F#dim
Roman numeral	I	ii	iii	IV	V	vi	vii



ROUGH WORK



• Study the piece of music below.

• Using the given rhythms, add melody and bass notes to complete each phrase with cadence and approach chords as follows:

(i) At A, an IMPERFECT cadence with approach chord (I—IV—V)

(ii) At B, a PERFECT cadence with approach chord (ii—V—I)

(iii) At C, an INTERRUPTED cadence with approach chord (IV—V—vi)

(iv) At D, a PERFECT cadence with approach chord (IV—V—I)

Exercise A: A musical score in 3/4 time with a key signature of one sharp (F#). The first two measures are filled with notes: Treble clef (quarter, quarter, quarter) and Bass clef (half, quarter). The third measure is a blank staff with a bracket above it labeled 'A' containing three quarter notes. The fourth measure is also a blank staff.

Exercise B: A musical score in 3/4 time with a key signature of one sharp (F#). The first two measures are filled with notes: Treble clef (quarter, quarter, quarter) and Bass clef (half, quarter). The third measure is a blank staff with a bracket above it labeled 'B' containing three quarter notes. The fourth measure is also a blank staff.

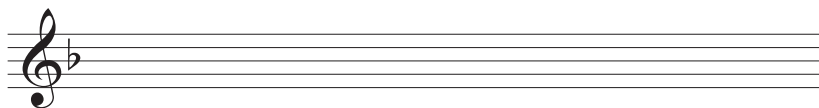
Exercise C: A musical score in 3/4 time with a key signature of one sharp (F#). The first two measures are filled with notes: Treble clef (quarter, quarter, quarter) and Bass clef (half, quarter). The third measure is a blank staff with a bracket above it labeled 'C' containing three quarter notes. The fourth measure is also a blank staff.

Exercise D: A musical score in 3/4 time with a key signature of one sharp (F#). The first two measures are filled with notes: Treble clef (quarter, quarter, quarter) and Bass clef (half, quarter). The third measure is a blank staff with a bracket above it labeled 'D' containing three quarter notes. The fourth measure is also a blank staff.

Q.5 ADDING BASS NOTES AND CHORD INDICATIONS AT CADENCE POINTS

PREPARATORY WORK

- Write out the scale of F major on the staff below:

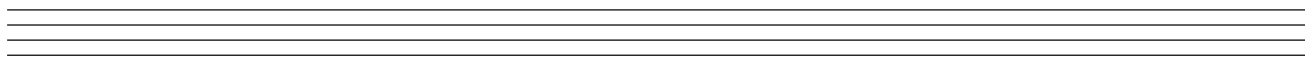
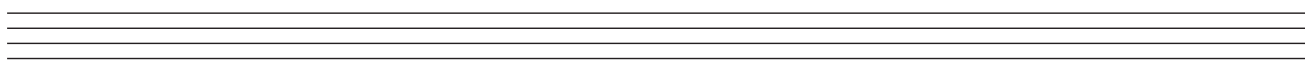
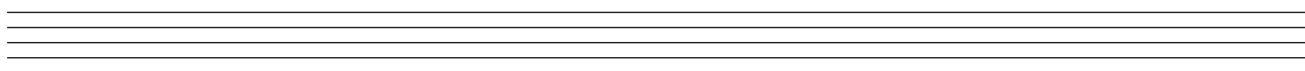


- Plot the chords available in this key (I, ii, IV, V and vi) either in the chord bank grid *or* on the staff below. The first chord is given.

Notes of chord	C A F		E C A				B \flat G E
Chord symbol	F		Am				E \dim
Roman numeral	I	ii	iii	IV	V	vi	vii



ROUGH WORK



- Study the piece of music below.
- Add suitable bass notes and chord indications to complete the cadences at A, B, C and D.
- You may use either chord symbols *or* Roman numerals, but not both.
- Do not repeat the same chord in adjacent boxes.

A

B

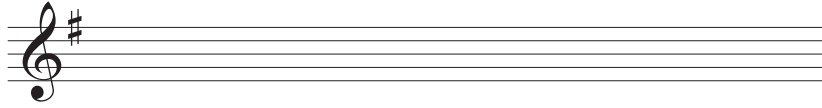
C

D

Q.6 ADDING DESCANT NOTES AND CHORD INDICATIONS AT CADENCE POINTS

PREPARATORY WORK

- Write out the scale of G major on the staff below:

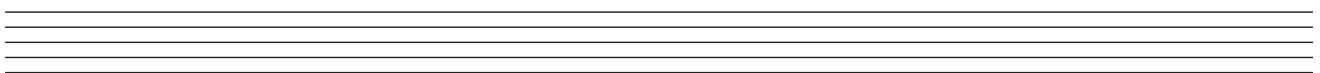
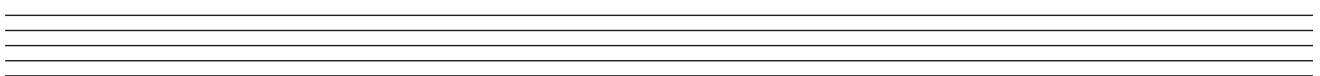
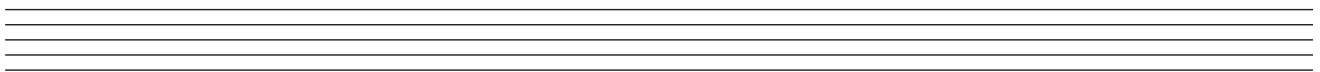


- Plot the chords available in this key (I, ii, IV, V and vi) either in the chord bank grid *or* on the staff below. The first chord is given.

Notes of chord	D B G		F# D B				C A F#
Chord symbol	G		Bm				F#dim
Roman numeral	I	ii	iii	IV	V	vi	vii



ROUGH WORK



- Study the piece of music below.
- Complete the phrase endings by adding suitable chords and descant notes at A, B, C and D.
- You may use either chord symbols *or* Roman numerals, but not both.

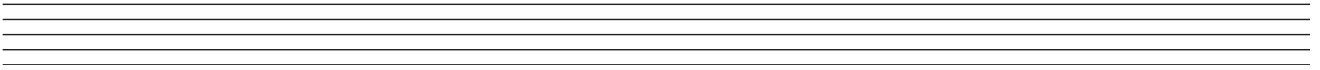
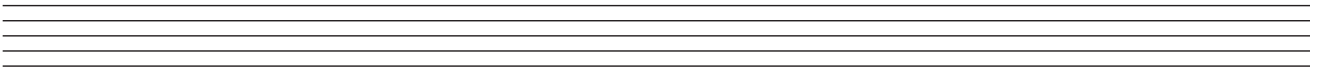
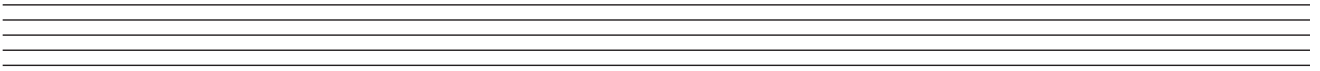
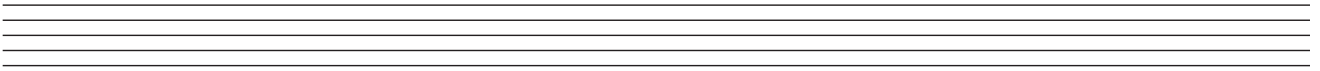
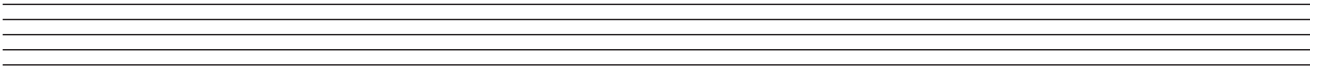
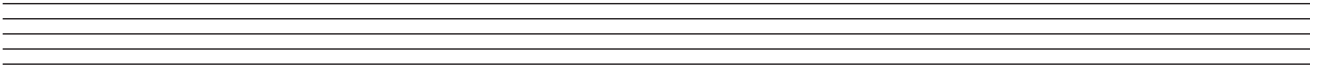
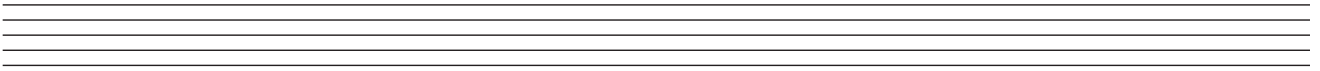
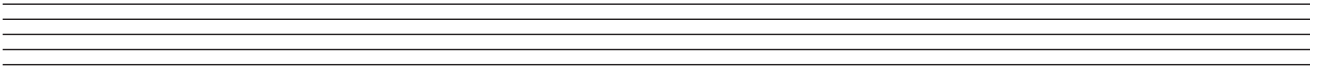
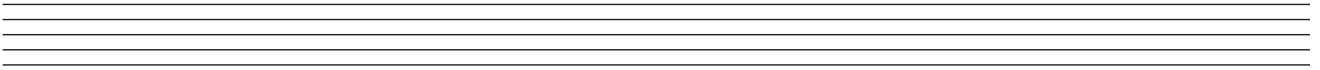
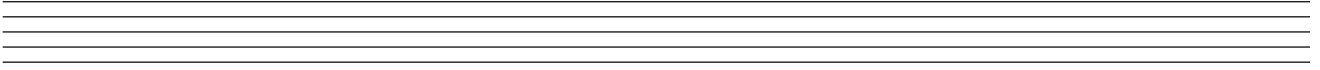
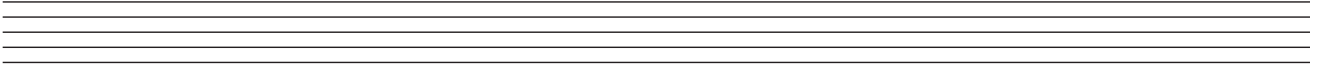
A

B

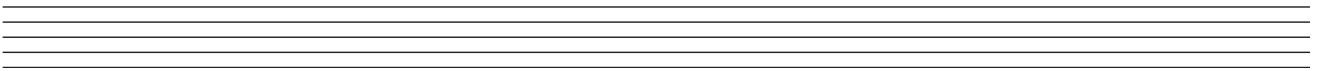
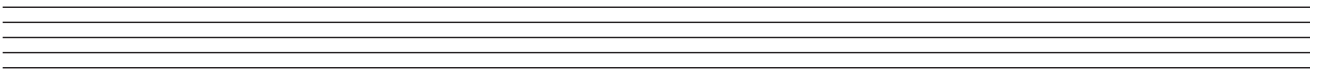
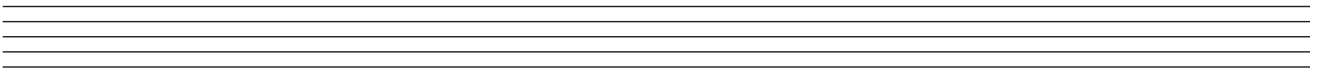
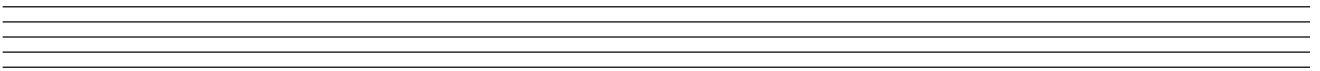
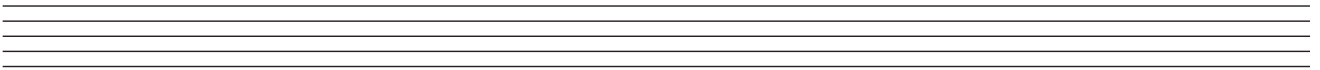
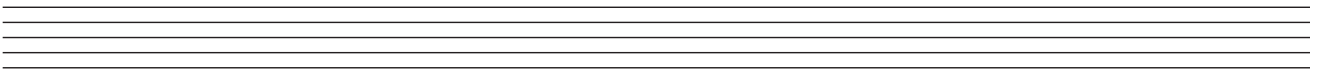
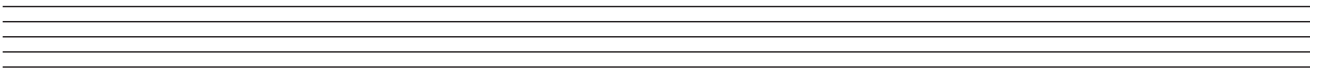
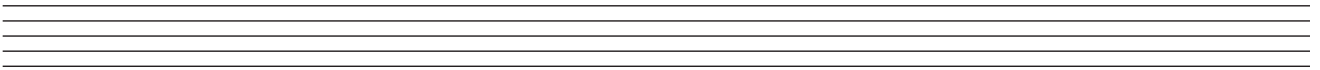
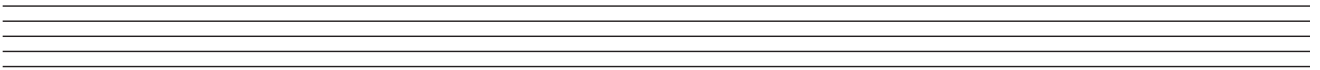
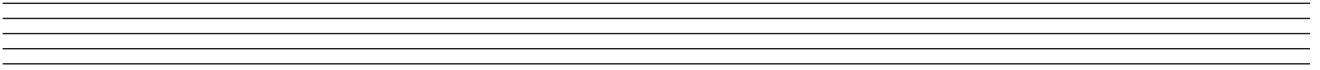
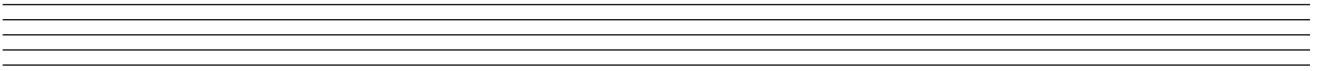
C

D

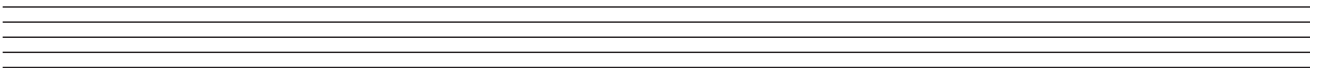
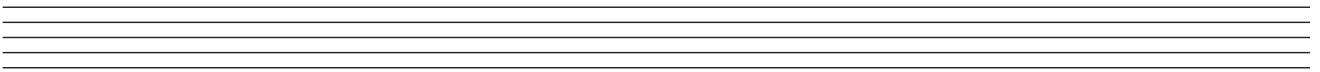
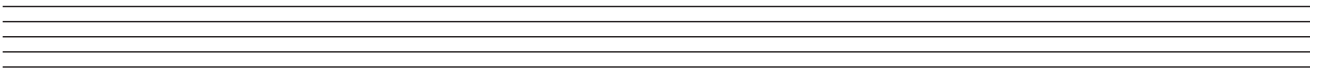
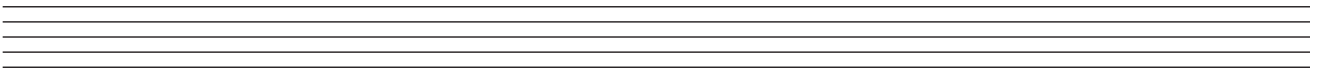
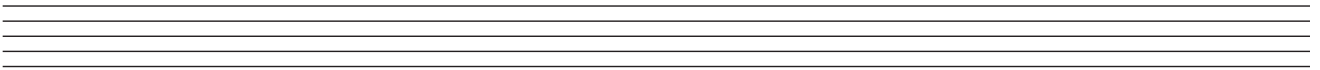
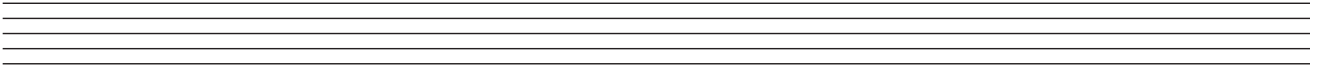
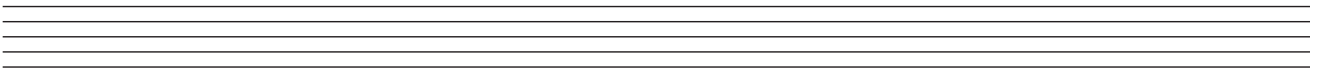
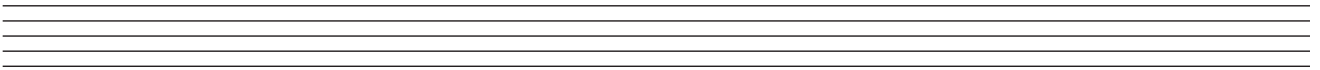
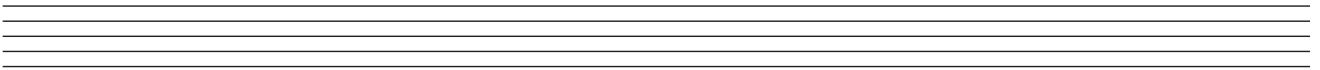
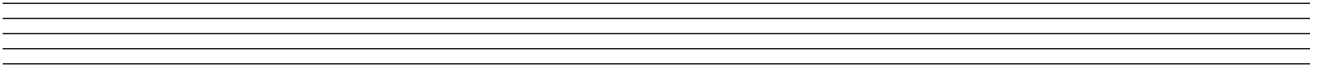
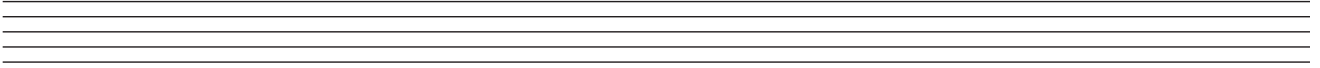
ROUGH WORK



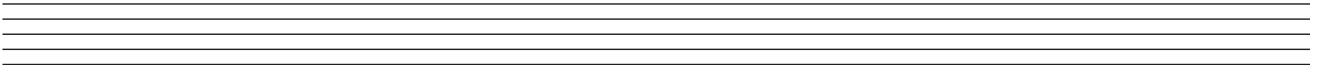
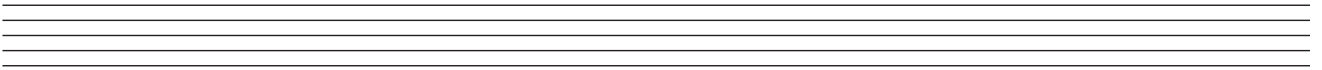
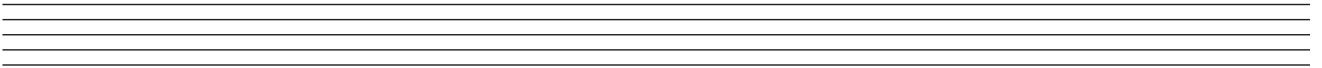
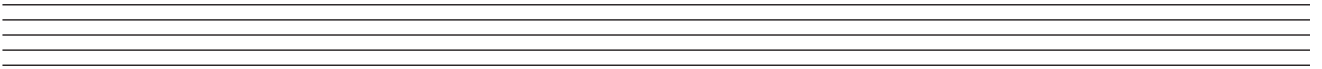
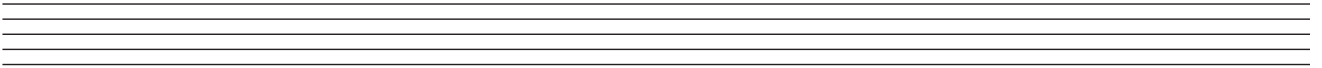
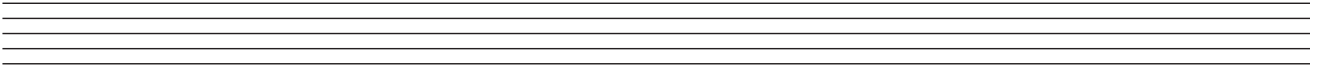
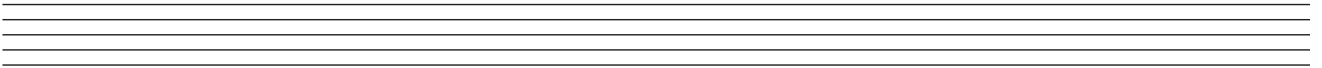
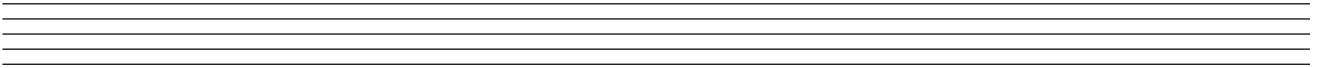
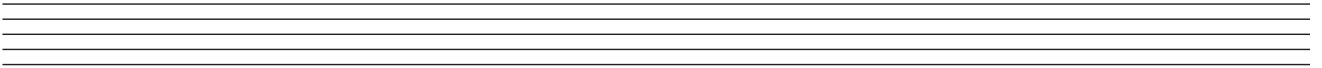
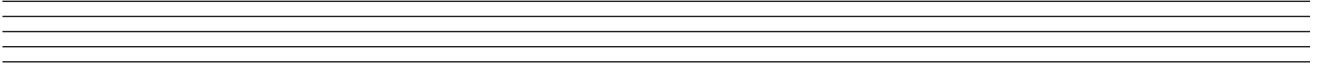
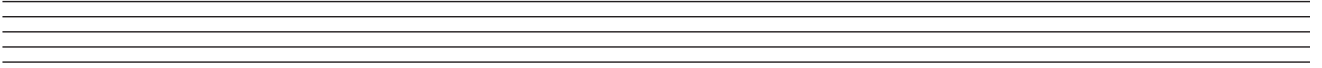
ROUGH WORK



ROUGH WORK



ROUGH WORK



BLANK PAGE