



**Coimisiún na Scrúduithe Stáit**  
State Examinations Commission

LEAVING CERTIFICATE EXAMINATION, 2008

WRITE YOUR EXAMINATION NUMBER HERE 

**MUSIC – ORDINARY LEVEL**  
**COMPOSING (100 marks)**  
**THURSDAY, 19 JUNE – AFTERNOON, 1.30 to 3.00**

STAMPA AN IONAIID  
(Centre Stamp)

Móriomlán na  
Marcanna

**DON SCRÚDAITHEOIR**

CEIST	MARC
1	
2	
3	
4	
5	
6	
IOM	
GRÁD	

**INSTRUCTIONS TO CANDIDATES**

- Write your examination number, as required, in the box above.
- Answer the questions in the spaces provided in this question-answer book.
- You may use the spaces in the middle and at the end of the question-answer book for rough work.

<b>1. Total of end of page totals</b>	
<b>2. Aggregate total of all disallowed questions</b>	
<b>3. Total mark awarded (1 minus 2)</b>	

**BLANK PAGE**

SECTION A – MELODY COMPOSITION (40 marks)

Answer ONE QUESTION ONLY in this section: Q1 or Q2 or Q3. Note that both Q1 and Q3 contain two sections.

**Q.1 CONTINUATION OF A GIVEN OPENING**

In the case of both (a) and (b),

- Continue the given opening to make an eight-bar melody, ending on the keynote, that is, doh.
- Add appropriate phrasing and expression marks to the melody.
- Choose a suitable instrument for each of your melodies from the list given:

(a)  flute  oboe  violin  trumpet

**Allegretto**



AND

(b)  flute  oboe  violin  trumpet

**Allegro**



## Q.2 SETTING MUSIC TO A GIVEN TEXT

Here is a poem called *God's Praises* (anonymous but translated by Brendan Kennelly).

Only a fool would fail to

Praise God in His might,

When the tiny mindless birds

Praise Him in their flight.

- The first two lines have been set to a rhythm. Compose a rhythm to fit the remaining words.

4/4 On - ly a fool would fail to

Praise God in His might,

When the ti - ny mind - less birds

Praise Him in their flight.

- Using this rhythm, compose a melody of eight bars, beginning as indicated and ending on the key note, that is, doh.

- Add appropriate phrasing and expression marks to the melody.

4/4 On - ly a fool would fail to

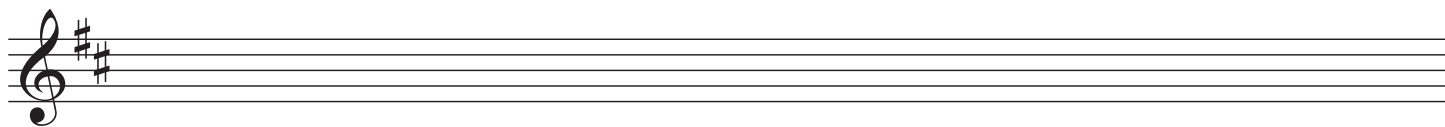
### Q.3 COMPOSING TO A GIVEN DANCE RHYTHM OR METRE OR FORM

Answer (a) *and* (b).

(a) Study this opening of a reel.

- Complete the first phrase.
- Compose an answering phrase, ending on the keynote, that is, doh.
- Add appropriate phrasing and expression marks to the melody.
- Choose a suitable instrument for your melody from the following list:

oboe       flute       violin       horn

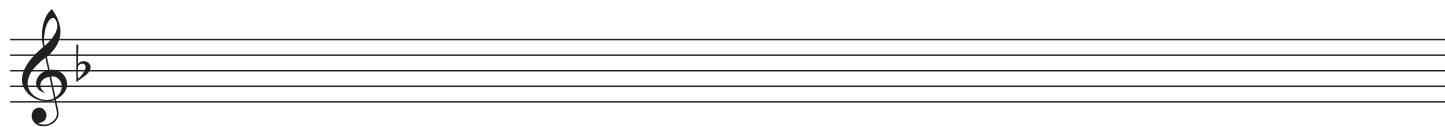


*AND*

(b) Study this opening of a minuet.

- Complete the first phrase.
- Compose an answering phrase, ending on the keynote, that is, doh.
- Add appropriate phrasing and expression marks to the melody.
- Choose a suitable instrument for your melody from the following list:

oboe       flute       violin       horn



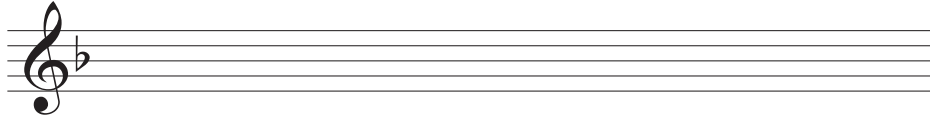
## SECTION B – HARMONY (60 marks)

Answer ONE QUESTION ONLY in this section: Q4 or Q5 or Q6

### Q.4 COMPOSING MELODY AND BASS NOTES FROM A SET OF CHORDS

#### PREPARATORY WORK

- Write out the scale of F major on the staff below:

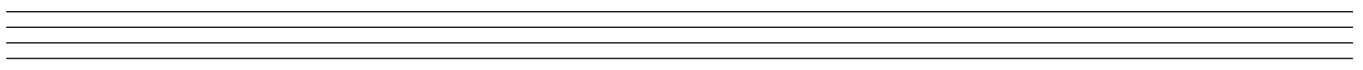
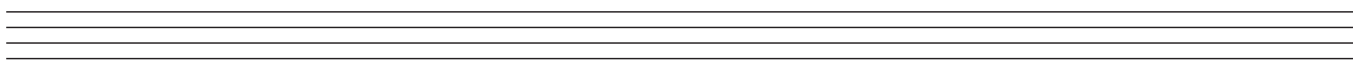
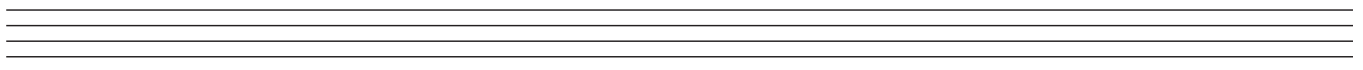


- Plot the chords available in this key (I, ii, IV, V, and vi) either in the chord bank grid *or* on the staff below. The first chord is given.

Notes of chord	C A F		E C A				B $\flat$ G E
Chord symbol	F		Am				E $\dim$
Roman numeral	I	ii	iii	IV	V	vi	vii



#### ROUGH WORK



• Study the following piece of music.

• Using the given rhythms, add melody and bass notes to complete the cadences and approach chords as follows:

(i) At A, a **PLAGAL** cadence with approach chord (ii—IV—I)

(ii) At B, an **IMPERFECT** cadence with approach chord (IV—ii—V)

(iii) At C, an **INTERRUPTED** cadence with approach chord (IV—V—vi)

(iv) At D, a **PERFECT** cadence with approach chord (IV—V—I)

Exercise A: Musical score in 3/4 time, key of B-flat major. The first two measures contain a melody in the treble clef and a bass line in the bass clef. The melody consists of a quarter note B-flat, a quarter note D, and a dotted quarter note F. The bass line consists of a dotted quarter note B-flat, an eighth note D, and a quarter note F. A bracket labeled 'A' spans the last three measures of the piece, which are currently empty.

Exercise B: Musical score in 3/4 time, key of B-flat major. The first two measures contain a melody in the treble clef and a bass line in the bass clef. The melody consists of a quarter note B-flat, a quarter note D, and a dotted quarter note F. The bass line consists of a dotted quarter note B-flat, an eighth note D, and a quarter note F. A bracket labeled 'B' spans the last three measures of the piece, which are currently empty.

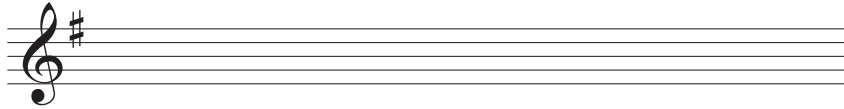
Exercise C: Musical score in 3/4 time, key of B-flat major. The first two measures contain a melody in the treble clef and a bass line in the bass clef. The melody consists of eighth notes: B-flat, D, E-flat, F, G, A, B-flat, A, G, F, E-flat, D, C. The bass line consists of a dotted quarter note B-flat, an eighth note D, and a quarter note F. A bracket labeled 'C' spans the last three measures of the piece, which are currently empty.

Exercise D: Musical score in 3/4 time, key of B-flat major. The first two measures contain a melody in the treble clef and a bass line in the bass clef. The melody consists of eighth notes: B-flat, D, E-flat, F, G, A, B-flat, A, G, F, E-flat, D, C. The bass line consists of a dotted quarter note B-flat, an eighth note D, and a quarter note F. A bracket labeled 'D' spans the last three measures of the piece, which are currently empty.

## Q.5 ADDING BASS NOTES AND CHORD INDICATIONS AT CADENCE POINTS

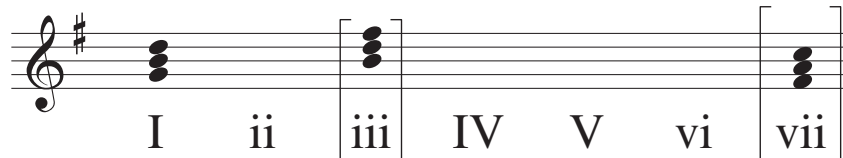
### PREPARATORY WORK

- Write out the scale of G major on the staff below:

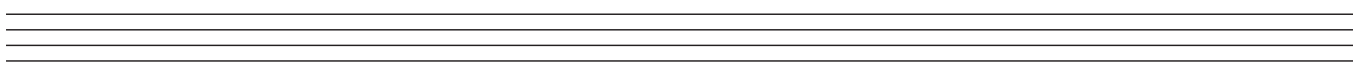
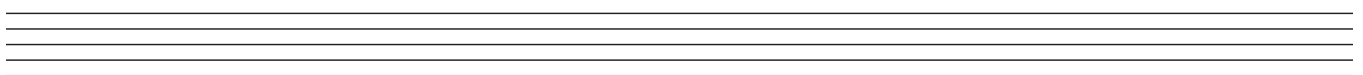
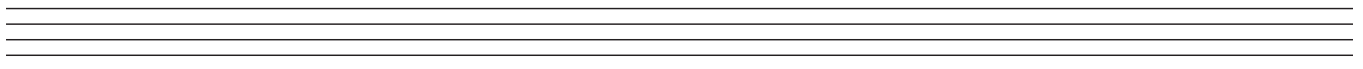


- Plot the chords available in this key (I, ii, IV, V, vi) either in the chord bank grid *or* on the staff below. The first chord is given.

Notes of chord	D B G		F# D B				C A F#
Chord symbol	G		Bm				F#dim
Roman numeral	I	ii	iii	IV	V	vi	vii



### ROUGH WORK





- Study the following piece of music.
- Add suitable bass notes and chord indications to complete the cadences at A, B, C and D.
- You may use either chord symbols *or* Roman numerals, but not both.
- If you choose Roman numerals, use *lower case* for *minor* chords (ii, vi).

**A**

**B**

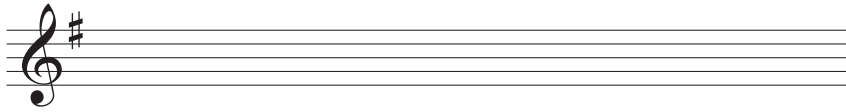
**C**

**D**

## Q.6 ADDING DESCANT NOTES AND CHORD INDICATIONS AT CADENCE POINTS

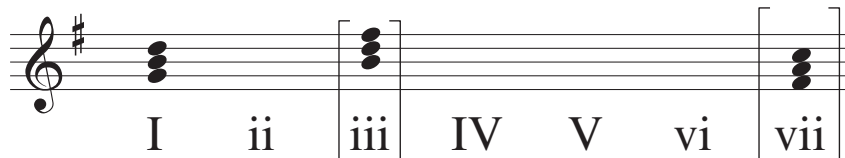
### PREPARATORY WORK

- Write out the scale of G major on the staff below:

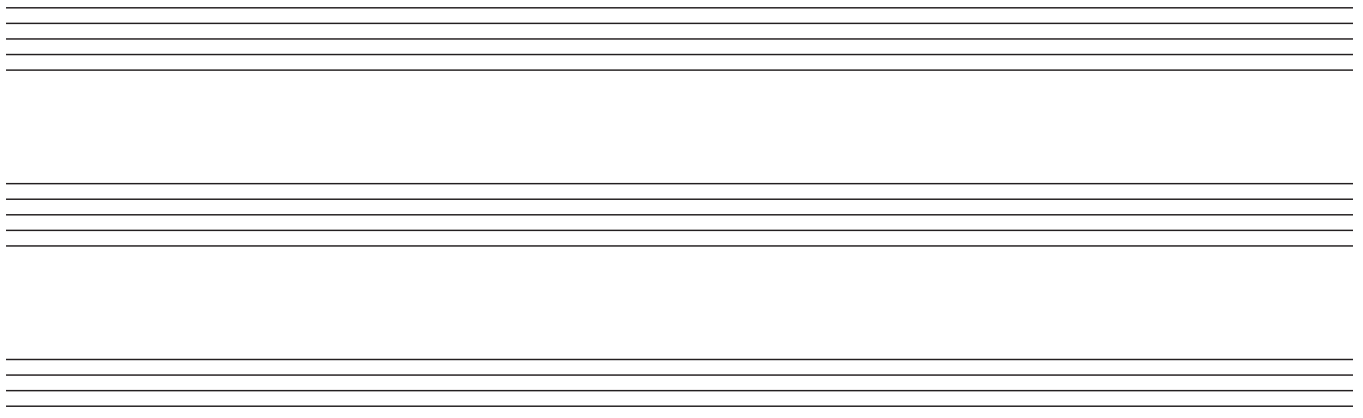


- Plot the chords available in this key (I, ii, IV, V, vi) either in the chord bank grid *or* on the staff below. The first chord is given.

Notes of chord	D		F#				C
	B		D				A
	G		B				F#
Chord symbol	G		Bm				F#dim
Roman numeral	I	ii	iii	IV	V	vi	vii



### ROUGH WORK



- Study the following piece of music.
- Complete the phrase endings by adding suitable chords and descant notes at A, B, C and D.
- You may use either chord symbols *or* Roman numerals, but not both.
- If you choose Roman numerals, use *lower case* for *minor* chords (ii, vi).

Descant

Melody

Bass

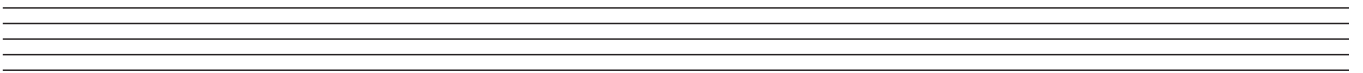
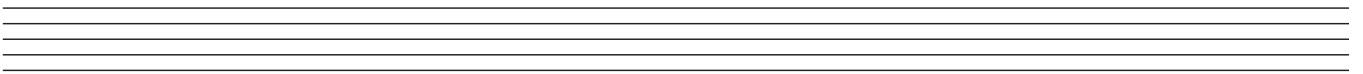
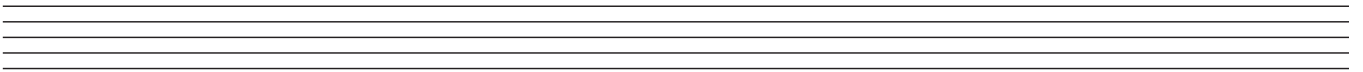
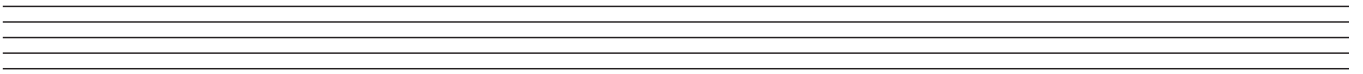
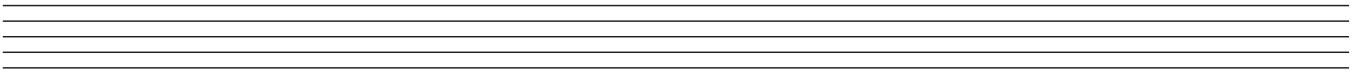
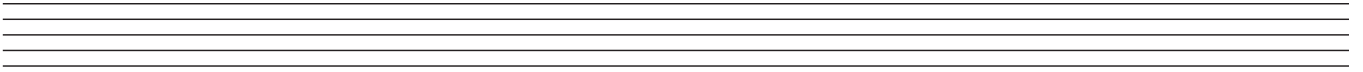
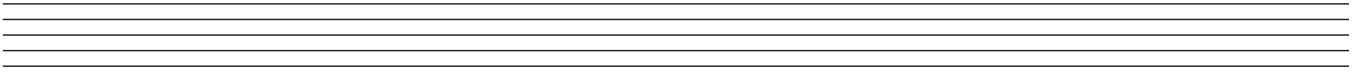
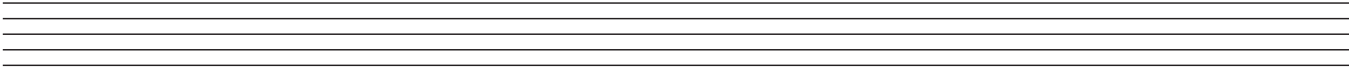
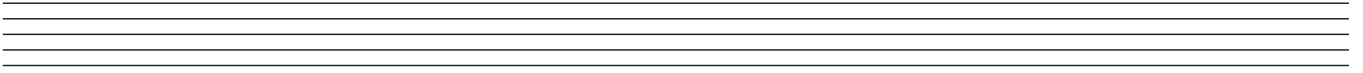
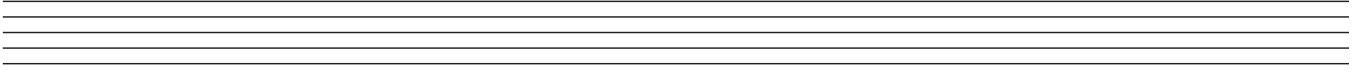
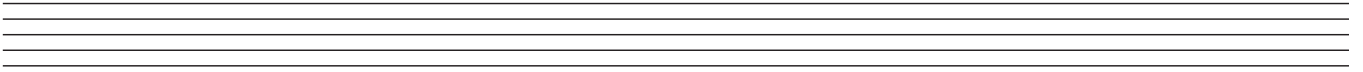
A

B

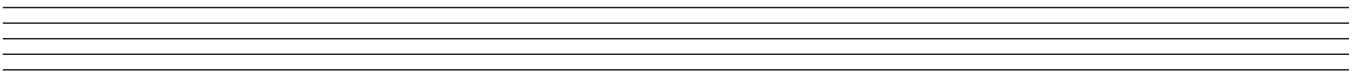
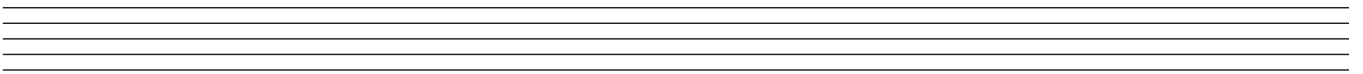
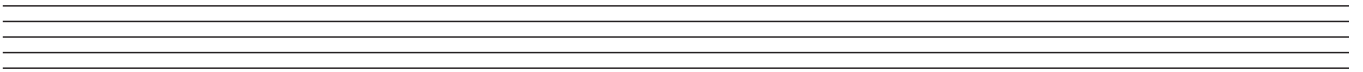
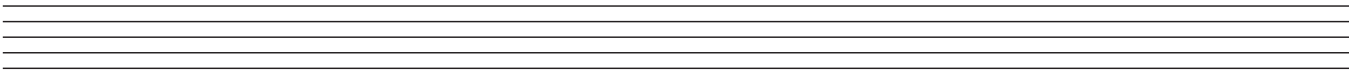
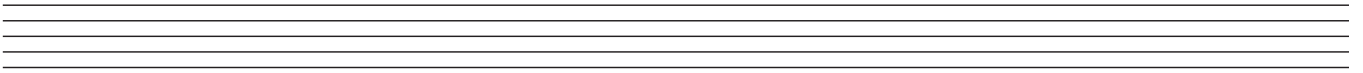
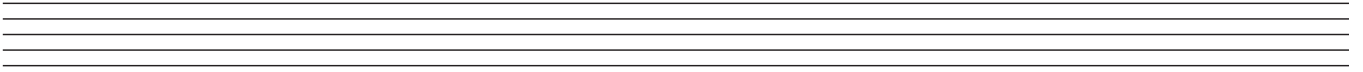
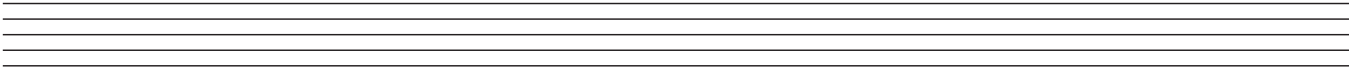
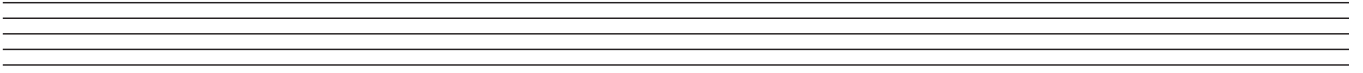
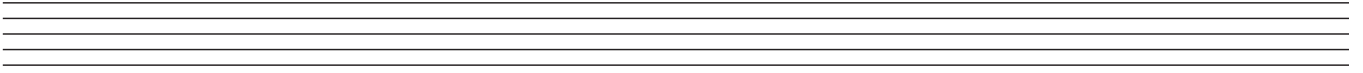
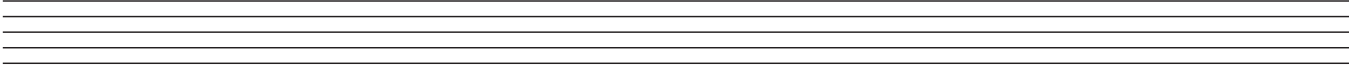
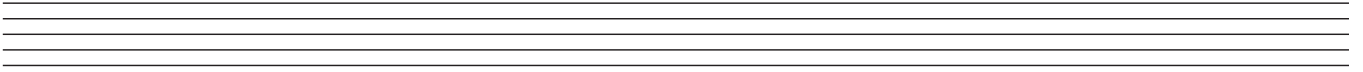
C

D

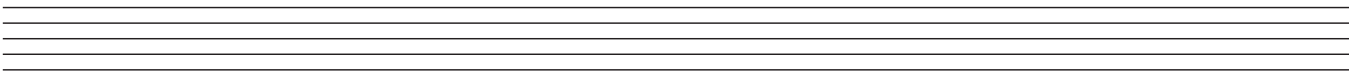
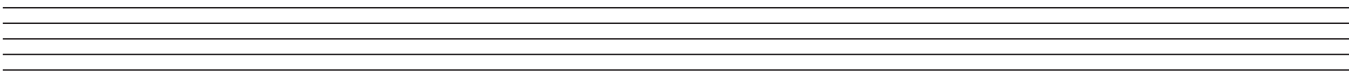
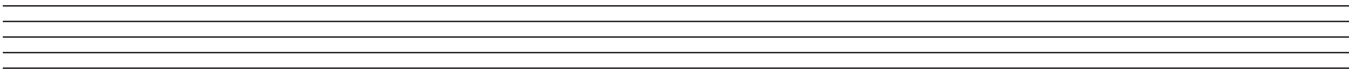
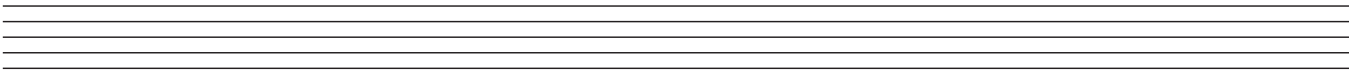
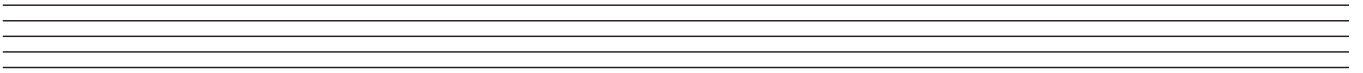
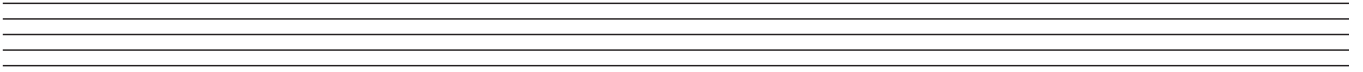
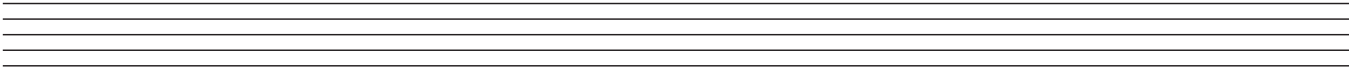
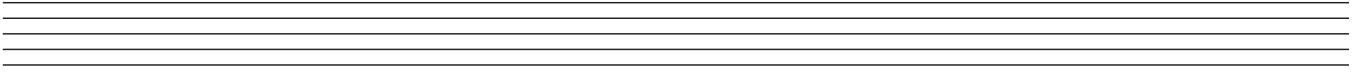
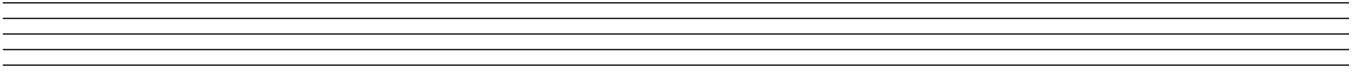
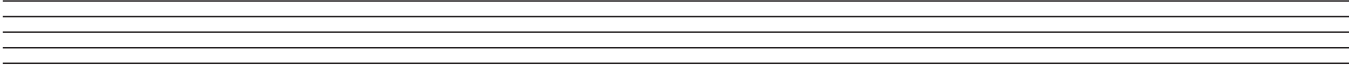
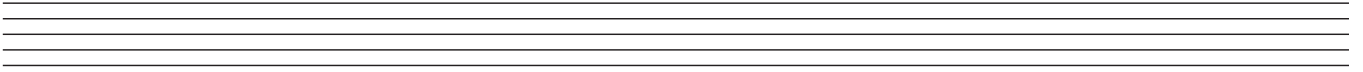
# ROUGH WORK



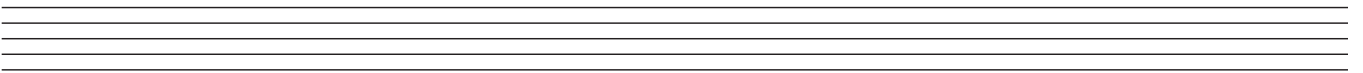
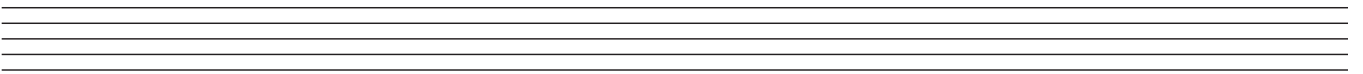
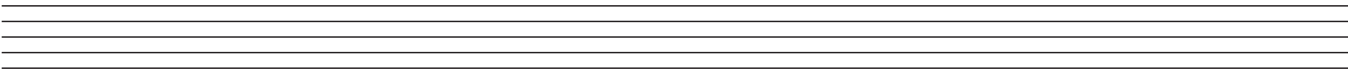
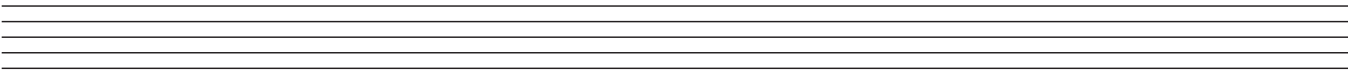
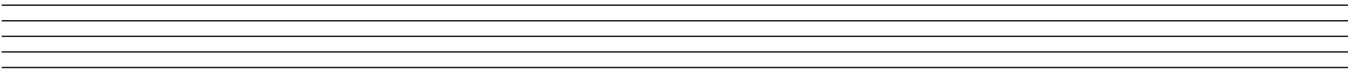
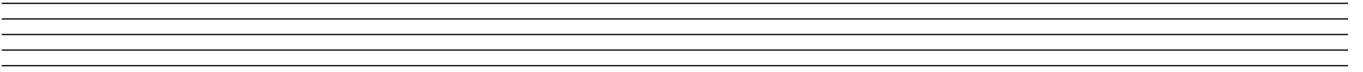
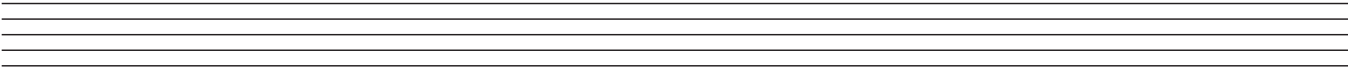
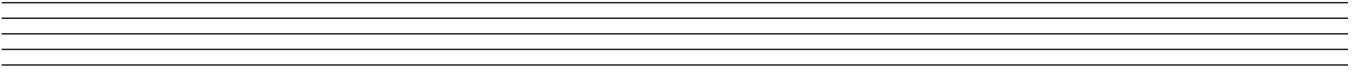
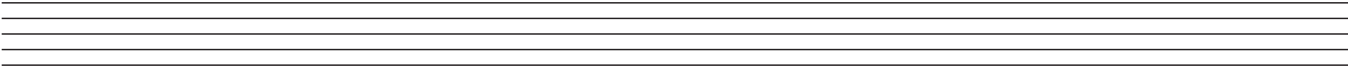
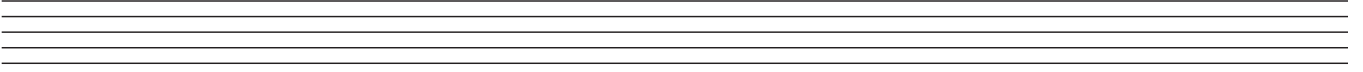
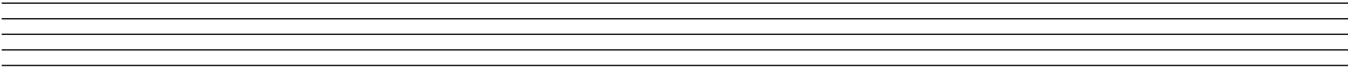
# ROUGH WORK



# ROUGH WORK



# ROUGH WORK



**BLANK PAGE**