



Coimisiún na Scrúduithe Stáit State Examinations Commission

Leaving Certificate Applied 2003

Vocational Specialism Craft & Design

Written examination (40% of total marks)

Date: Thursday, 12 June, 2002

Afternoon - 2.00 – 3.30

General Directions to Candidates

1. Write your **EXAMINATION NUMBER** in this space
2. This paper contains eight questions
Candidates must attempt any four questions.

For the Superintendent only	For the Examiner only	
<div style="border: 1px solid black; width: 80%; margin: auto; padding: 20px;"> <p style="text-align: center;">Centre Stamp</p> </div>	<i>Question 1</i>	
	<i>Question 2</i>	
	<i>Question 3</i>	
	<i>Question 4</i>	
	<i>Question 5</i>	
	<i>Question 6</i>	
	<i>Question 7</i>	
	<i>Question 8</i>	
	<i>Total</i>	

Tick (✓) the Craft and Design modules you have studied as part of your course

<i>Area</i>	✓		<i>Module</i>
Fashion and Textiles		1	Creative decoration
		2	Surface- pattern design
		3	Textiles-structuring/weaving
		4	Fashion - construction
Graphic Communication and Print Media		5	Signage
		6	Design communications through illustration
		7	Layout in graphic communication
		8	Block printing
Three-Dimensional Studies		9	Jewellery
		10	Interior design
		11	Modelling
		12	Ceramics
Lens Based Studies		13	Video production
		14	The camera - photography
		15	Manipulating photographic imagery

Question 1

(40 marks)

Belts are very fashionable now.

They are **practical and decorative**.

Fabric, metal, leather and even **shells** are used to make belts.



Sketch your favourite of the three belts in the illustration.

What clothes would you wear with your favourite belt.	Use sketches to help explain your answer.

How would you **improve the design** of your favourite belt?
 Give reasons for your answers.

Would you change the colour ?	Sketch
Give one reason.	

Would you change the material ?	Sketch
Give one reason.	

Would you change the pattern ?	Sketch
Give one reason.	

Would you change how it fastens ?	Sketch
Give one reason.	

Question 2

(40 marks)

Examples of **pattern** are all around us **in the classroom and at home.**

Sketch **one example** of pattern that you see everyday at school **or** at home.



Do you like this pattern?

Give two reasons for your answer.

Reason 1.	Reason 2.

Describe the **steps** you would follow to create a **simple repeat pattern**.
Use **sketches** to help explain your answer.

Step 1.	Sketches
Step 2.	Sketches
Step 3.	Sketches

How would you see this pattern being used? e.g. wallpaper, fashion fabric, wrapping paper.

Give reasons for your answer.

Question 3.

(40 marks)

In what craft module did you make your project? _____

Design a label to display on your finished project
Your label should contain the following information.

- The **name of the craft** you have studied
- The **year** in which you made your piece.

Make a sketch of the **layout and shape and colour** of your label.
You may use any layout or shape you think is suitable.



Give reasons for your **choice of layout and shape and colour**
Use the following headings to help you.

Shape:
Lettering:
Colour:

Examine the accompanying labels. **Discuss two** of them under the following headings; shape, lettering/symbols and colour.



Colour:	
Lettering:	
Shape:	

Explain how you would **attach your label** to your finished craftwork. Use **sketches** to help explain your answer.

	Sketches

Question 4.

(40 marks)

In what craft module did you make your project? _____

Sketch a piece you have designed and made in your chosen craft module.



Were you pleased with your finished craft piece?
Give **two reasons** for your answer.

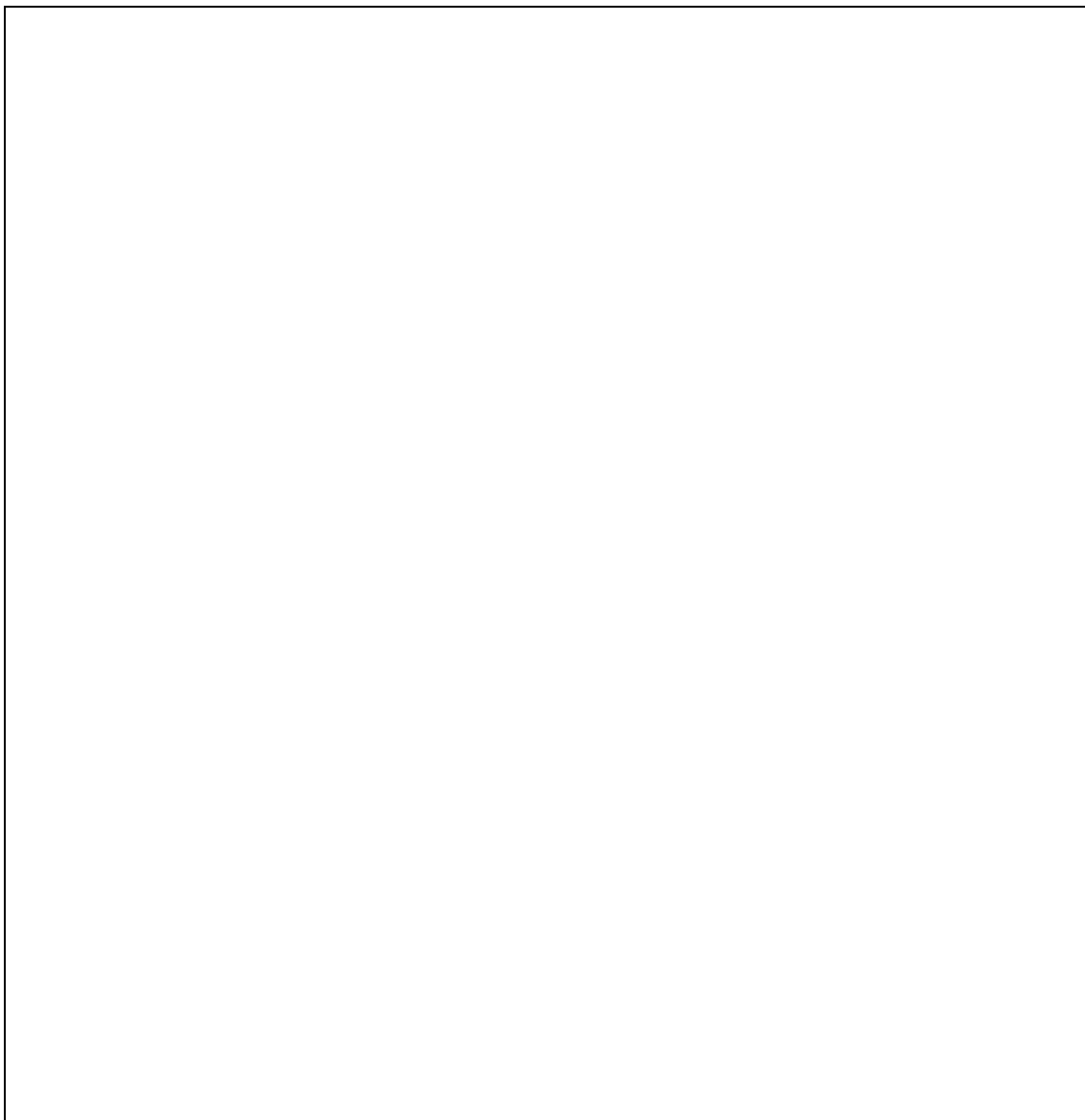
Reason 1.
Reason 2.

You have been asked to display your craft piece as part of your school's annual Open Day.

The display should **include an example of all the equipment and materials** that you used to design and make your craft piece.

Make a **list** of all the **materials and equipment** that you used.

Sketch how you would arrange your display.





Question 5.

(40 marks)

Examine the accompanying illustrations of **two taps**.

Compare them under the following headings:

Shape, function, materials and colour.

Tap illustration 1.	Tap Illustration 2.
	

Shape:
Function:
Materials:

Colour:

Where would you install these taps?

Give reasons for your answer.

Reason 1.
Reason 2.

Sketch a tap you are familiar with and indicate the material used and its suitability.

--

Question 6.

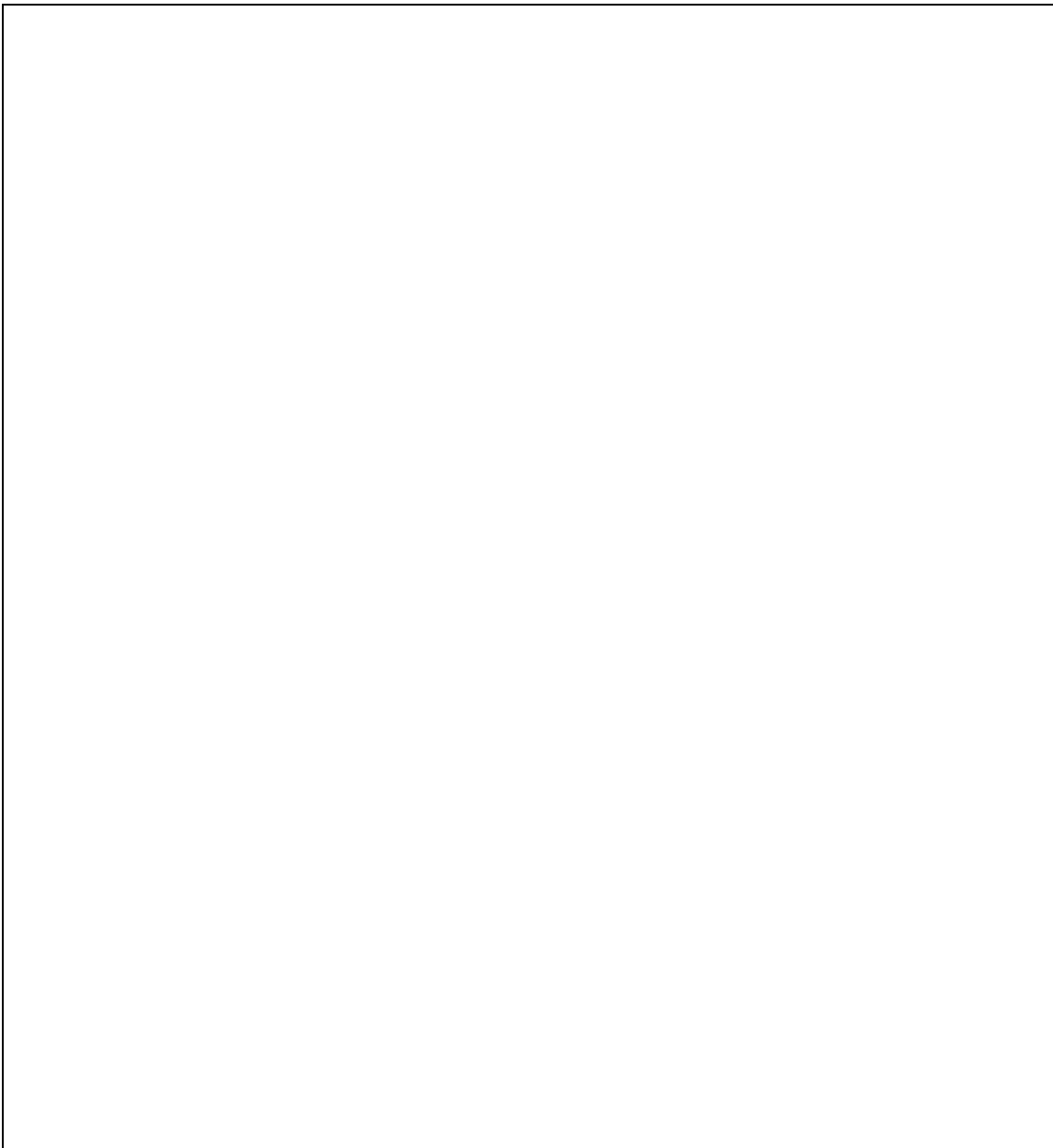
(40 marks)

Your school has decided to **decorate a room for senior students.**
The students will use the room during break and during free classes.

Sketch how you would **layout** the room.
There must be space for each of the following:

- **Eating**
- **Doing homework**

Use a typical classroom in your school as a **starting point.**



Explain why you chose this layout, using the following headings:
function, furniture, space and lighting.

Function:
Furniture:
Space:
Lighting:

Suggest a colour scheme for use in the room.
Give reasons for your answer.
 Use sketches to help explain your answer.

Reason 1.	Sketches
Reason 2.	

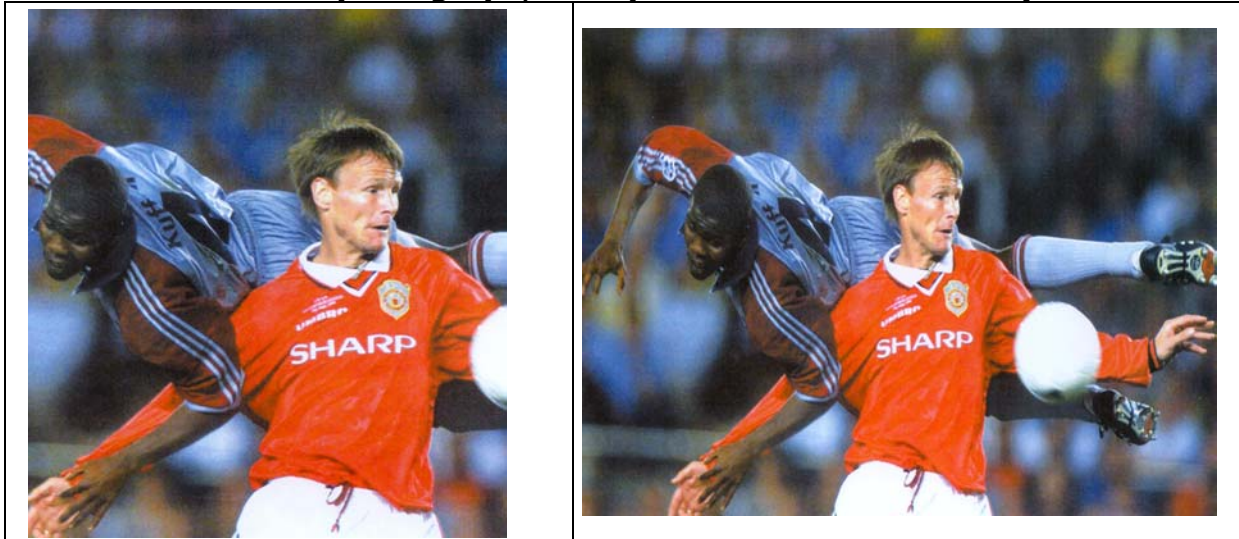
Question 7.

(40 marks)

The **viewfinder** of a camera helps you select how you photograph a subject.

Study the accompanying photographs.

Both are of the **same photograph, each printed in a different way.**



In your opinion, **which shape works best?**

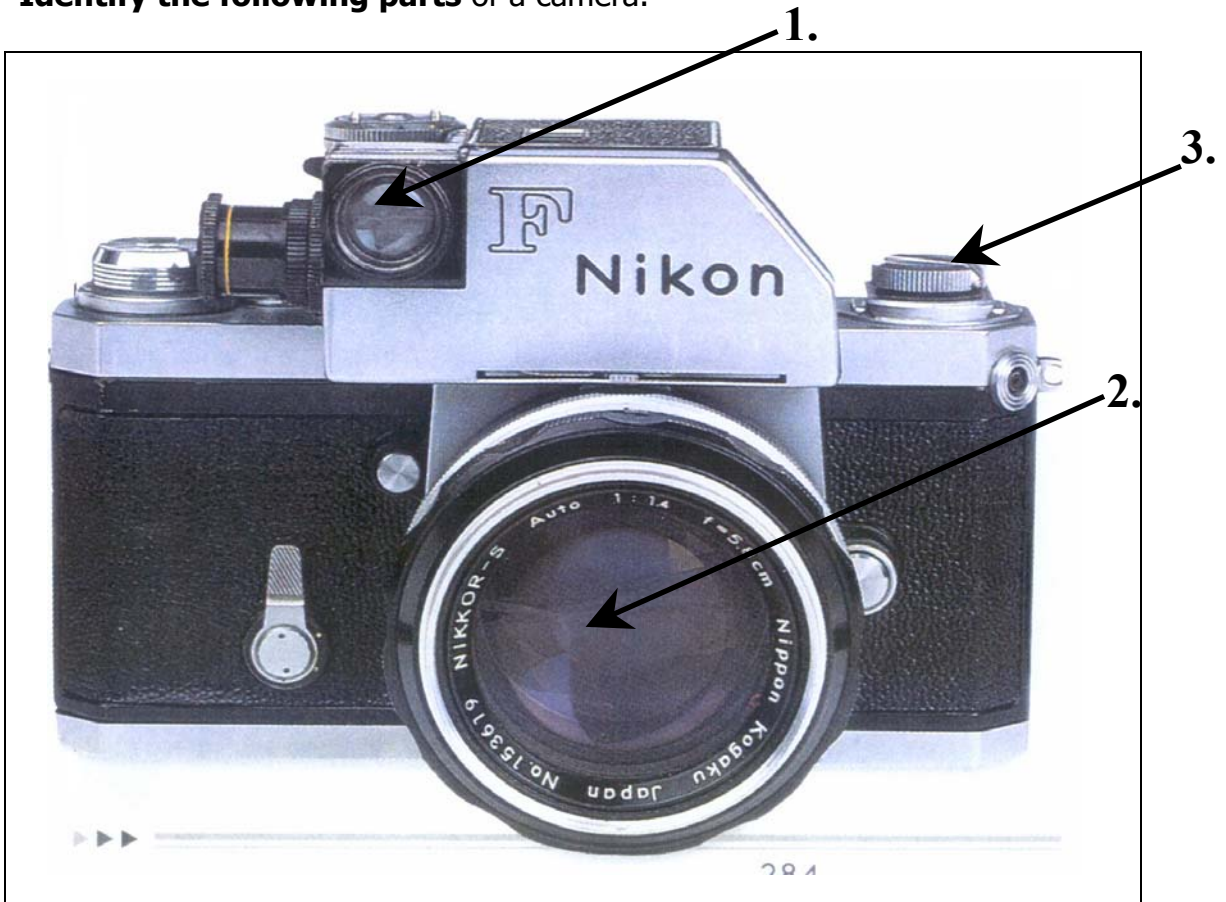
Give **reasons** for your answer.

Use the following headings to assist you with your answer.

Shape:
Colour :
Pattern:

Study the accompanying illustration of a camera.

Identify the following parts of a camera.



Describe the function of each part.

Part 1.
Part 2.
Part 3.

Question 8.

(40 marks)

Describe the **steps involved in taking a photograph of your class.**
Use **sketches** to help explain your answer.

Step 1.	Sketches
Step 2.	Sketches
Step 3.	Sketches

Make a list of the **equipment and materials** that you have used while studying photography.

Sometimes photographs are blurred, like the one illustrated here.



In what situations would you use blurring to create a particular effect?
 Give **reasons** for your answers.
 Use sketches to help explain your answer.

Step 1.	Sketches
Reason	
Step 2.	
Reason	

Blank Page

Blank Page

For the Examiner only	
<i>Question 1</i>	
<i>Question 2</i>	
<i>Question 3</i>	
<i>Question 4</i>	
<i>Question 5</i>	
<i>Question 6</i>	
<i>Question 7</i>	
<i>Question 8</i>	
<i>Total</i>	