



Coimisiún na Scrúduithe Stáit **State Examinations Commission**

Scrúdú an Teastais Shóisearaigh, 2013
Junior Certificate Examination, 2013

CEOL MUSIC

Gnáthleibhéal—Trialacha gan ullmhú

- **Amharcléamh**
- **Cluaschuimhne (rithim)**
- **Cluaschuimhne (séis)**

Ordinary level—Unprepared tests

- Sight-reading
- Aural memory (rhythm)
- Aural memory (melody)

Faoi rún daingean Strictly confidential

Clár Contents

Amharcléamh Sight-reading	3
Fliúit Shasanach forshéise Descant recorder	3
Fliúit Flute	3
Trumpa in B maol Trumpet in B flat	3
Coirnéad in B maol Cornet in B flat	3
Pianó Piano	4
Méarchlár Keyboard	4
Orgán leictreonach Electronic organ	4
Feadóg in D Whistle in D.	5
Fliúit cheolchoirme Concert flute	5
Feadóg in C Whistle in C.	5
Veidhlín Violin	5
Fidil Fiddle	5
Guth ard (tribil) High voice (treble).	6
Guth íseal (tribil) Low voice (treble)	6
Sreangdhruma Snare-drum	6
Giotár Guitar	7
Cluaschuimhne (rithim) Aural memory (rhythm)	8
Cluaschuimhne (séis) Aural memory (melody).	9
Innéacs Index.	11

Fliúit Shasanach forshéise Descant recorder

GL OL

Meánach Moderately

Two staves of musical notation for the Descant recorder. The first staff begins with a treble clef, a key signature of one sharp (F#), and a 4/4 time signature. The melody consists of quarter notes: G4, A4, B4, C5, B4, A4, G4, F#4, E4, D4, C4. The second staff continues the melody with quarter notes: B3, A3, G3, F#3, E3, D3, C3, B2, A2, G2, F#2, E2, D2, C2.

Fliúit Flute

GL OL

Válsa Waltz

Two staves of musical notation for the Flute. The first staff begins with a treble clef, a key signature of one sharp (F#), and a 3/4 time signature. The melody consists of quarter notes: G4, A4, B4, C5, B4, A4, G4, F#4, E4, D4, C4. The second staff continues the melody with quarter notes: B3, A3, G3, F#3, E3, D3, C3, B2, A2, G2, F#2, E2, D2, C2.

Trumpa in B maol Trumpet in B flat Coirnéad in B maol Cornet in B flat

GL OL

Meanmach Lively

Two staves of musical notation for the Trumpet/Cornet. The first staff begins with a treble clef, a key signature of one sharp (F#), and a 4/4 time signature. The melody consists of quarter notes: G4, A4, B4, C5, B4, A4, G4, F#4, E4, D4, C4. The second staff continues the melody with quarter notes: B3, A3, G3, F#3, E3, D3, C3, B2, A2, G2, F#2, E2, D2, C2.

Airde iarbhír Actual pitch

Meanmach Lively

Two staves of musical notation for the Actual pitch. The first staff begins with a treble clef, a key signature of one flat (Bb), and a 4/4 time signature. The melody consists of quarter notes: G4, A4, B4, C5, B4, A4, G4, F#4, E4, D4, C4. The second staff continues the melody with quarter notes: B3, A3, G3, F#3, E3, D3, C3, B2, A2, G2, F#2, E2, D2, C2.

GL OL

Pianó Piano

Válsa Waltz

Musical notation for the first system of 'Válsa Waltz'. It consists of two staves: a treble clef staff and a bass clef staff. The key signature is one sharp (F#) and the time signature is 3/4. The first measure of the treble staff has a finger number '5' above the first note. The dynamic marking 'mf' is placed between the staves. The second measure of the bass staff has a finger number '5' above the first note. The piece ends with a double bar line.

Musical notation for the second system of 'Válsa Waltz'. It consists of two staves: a treble clef staff and a bass clef staff. The key signature is one sharp (F#) and the time signature is 3/4. The first measure of the bass staff has a dynamic marking 'f'. The second measure of the treble staff has a dynamic marking 'p'. The piece ends with a double bar line.

Méarchlár Keyboard

Orgán leictreonach Electronic organ

GL OL

Máirseáil March

Musical notation for the first system of 'Máirseáil March'. It consists of two staves: a treble clef staff and a bass clef staff. The key signature is one sharp (F#) and the time signature is 4/4. The first measure of the treble staff has a finger number '1' above the first note. The dynamic marking 'f' is placed between the staves. The first measure of the bass staff has a finger number '1' above the first note. The piece ends with a double bar line.

Musical notation for the second system of 'Máirseáil March'. It consists of two staves: a treble clef staff and a bass clef staff. The key signature is one sharp (F#) and the time signature is 4/4. The piece ends with a double bar line.

Feadóg in D Whistle in D Fliúit cheolchoirme Concert Flute

GL OL

Meanmach Lively

mf

The musical score for 'Feadóg in D Whistle in D' is written on two staves in treble clef. The key signature has two sharps (D major) and the time signature is 2/4. The tempo is 'Meanmach Lively'. The first staff begins with a dynamic marking of *mf*. The melody consists of eighth and quarter notes, ending with a whole note.

GL OL

Feadóg in C Whistle in C

Meanmach Lively

mf

The musical score for 'Feadóg in C Whistle in C' is written on two staves in treble clef. The key signature has no sharps or flats (C major) and the time signature is 2/4. The tempo is 'Meanmach Lively'. The first staff begins with a dynamic marking of *mf*. The melody consists of eighth and quarter notes, ending with a whole note.

Veidhlín Violin Fidil Fiddle

GL OL

Go mall Slowly

mp

mf *p*

The musical score for 'Veidhlín Violin' is written on two staves in treble clef. The key signature has two sharps (D major) and the time signature is 2/4. The tempo is 'Go mall Slowly'. The first staff begins with a dynamic marking of *mp*. The second staff begins with a dynamic marking of *mf* and ends with a dynamic marking of *p*, with a hairpin indicating a decrescendo.

Guth ard (tribil) High voice (treble)

GL OL

Meánach Moderately

Musical notation for High voice (treble) in 3/4 time, key of D major. The piece is titled 'Meánach Moderately' and starts with a piano (*p*) dynamic. The melody consists of quarter notes in the first two measures, followed by half notes in the last two measures. The first staff ends with a fermata over a quarter note, and the second staff continues the melody to the end of the piece.

Guth íseal (tribil) Low voice (treble)

GL OL

Mall Slowly

Musical notation for Low voice (treble) in 4/4 time, key of D major. The piece is titled 'Mall Slowly' and starts with a mezzo-piano (*mp*) dynamic. The melody is composed of quarter notes throughout. The first staff ends with a fermata over a quarter note, and the second staff continues the melody to the end of the piece.

Sreangdhruma Snare-drum

GL OL

Meanmach Lively

Musical notation for Snare-drum in 4/4 time, key of D major. The piece is titled 'Meanmach Lively' and starts with a forte (*f*) dynamic. The notation uses a snare drum symbol (H) and consists of eighth and sixteenth notes. The first staff ends with a fermata over a quarter note, and the second staff continues the rhythm to the end of the piece.

Giotár Guitar

GL OL

Mall Slowly

Musical notation for 'Mall Slowly' in 2/4 time, key of D major. The piece starts with a piano (*p*) dynamic. The melody consists of quarter notes and eighth notes, with some beamed eighth notes. The bass line consists of quarter notes.

GL OL

Séimh Gently

Musical notation for 'Séimh Gently' in 3/4 time, key of D major. The piece starts with a mezzo-forte (*mf*) dynamic. The melody consists of quarter notes and eighth notes. The bass line consists of quarter notes with a dotted half note.

GL OL

Meánach Moderately

Guitar chord notation for 'Meánach Moderately' in 4/4 time, key of D major. The notation shows four measures of chords: D, G, D, A in the first line, and D, Em, A, D in the second line. The strings are indicated by diagonal slashes.

GL OL

Máirseáil March

Guitar chord notation for 'Máirseáil March' in 4/4 time, key of D major. The notation shows four measures of chords: G, D, G, C in the first line, and G, Em, D, G in the second line. The strings are indicated by diagonal slashes.

GL OL

Gach triail rithime a sheinm M.M. ♩ = 84-94

All rhythm tests to be played M.M. ♩ = 84-94



Track 01



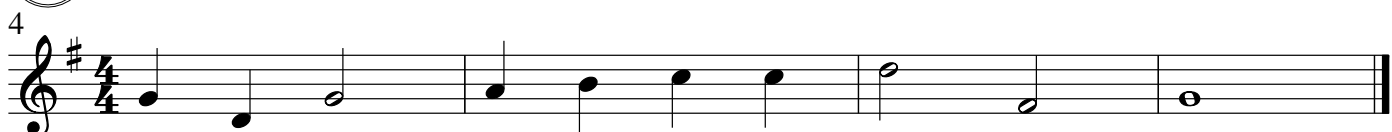
Track 02



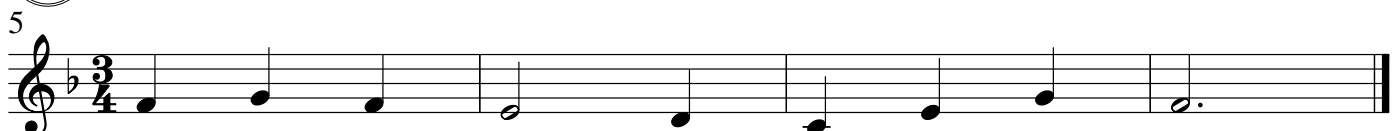
Track 03



Track 04



Track 05



Track 06



Track 07



Track 08



GL OL



Track 09

1 **Meánach** Moderately



Track 10

2 **Séimh** Gently



Track 11

3 **Meánmach** Lively



Track 12

4 **Meánach** Moderately



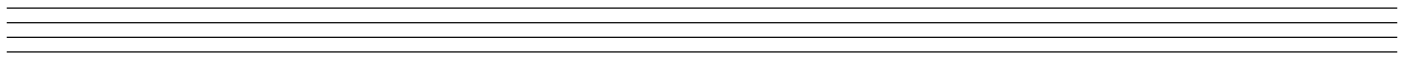
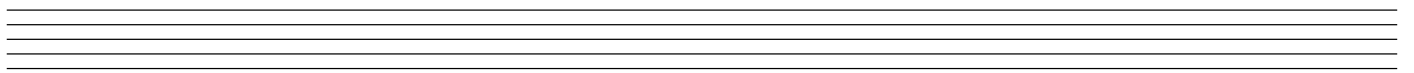
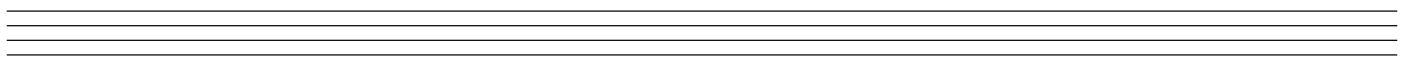
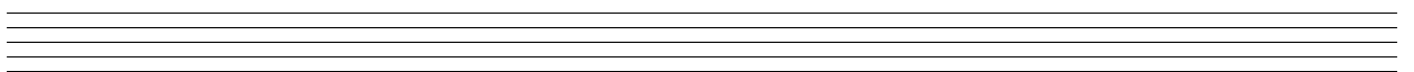
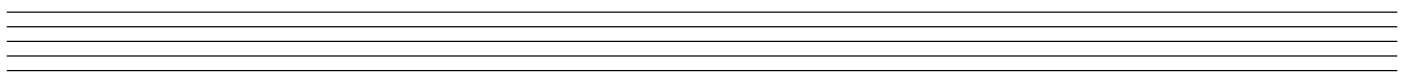
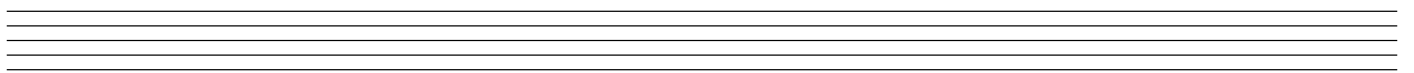
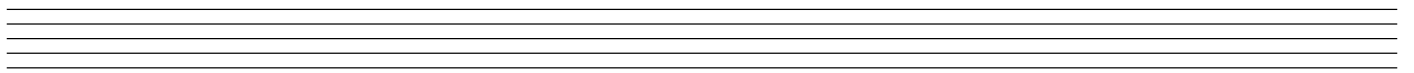
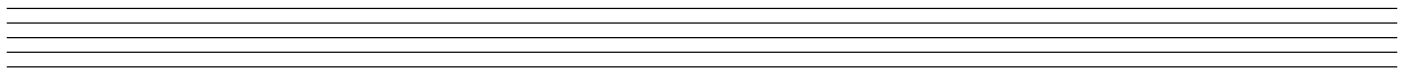
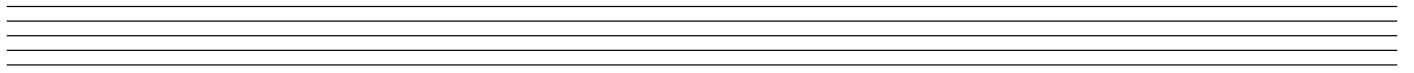
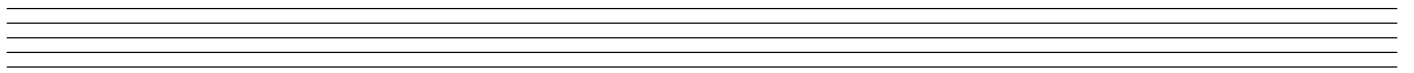
Track 13

5 **Meánach** Moderately



Track 14

6 **Ar luas siúil** At a walking pace



Innéacs Index

Coirnéad in B maol Cornet in B flat	3
Feadóg in C Whistle in C	5
Feadóg in D Whistle in D	5
Fidil Fiddle	5
Fliúit Flute	3
Fliúit cheolchoirme Concert flute	5
Fliúit Shasanach forshéise Descant recorder	3
Giotár Guitar	7
Guth ard (tribil) High voice (treble)	6
Guth íseal (tribil) Low voice (treble)	6
Méarchlár Keyboard	4
Orgán leictreonach Electronic organ	4
Pianó Piano	4
Sreangdhruma Snare-drum	6
Trumpa in B maol Trumpet in B flat	3
Veidhlín Violin	5

