



# Coimisiún na Scrúduithe Stáit State Examinations Commission

2018. S.40

## JUNIOR CERTIFICATE EXAMINATION, 2018

Write your EXAMINATION NUMBER here 

### MUSIC – ORDINARY LEVEL

LISTENING, COMPOSING AND GENERAL STUDY (300 marks)

Wednesday, 20 June, morning, 9:30–11:30

Centre stamp

FOR EXAMINER

Total mark

Total of end-of-page totals

--	--

Question	Mark	
1		
2		
3		
4		
5		
6		
7		
8		
Total		
Grade		

---

## GENERAL INSTRUCTIONS

- Before the examination begins, listen carefully to the test excerpt. If you cannot hear the recording clearly, tell the superintendent immediately.
- Write all your answers in this answer-book in the spaces provided.
- Rough work pages are included in the answer-book.

---

## SPECIAL INSTRUCTIONS

- Answer all questions.
  - In statements where there is a choice, circle or underline the one you think is correct.
  - You will have five minutes at the beginning to read questions 1 to 6.
-

## I—LISTENING

---

**Question 1****SET SONGS****30 marks**

---

Three excerpts, each played twice.

Answer A, B and C.

**Excerpt 1**

- A** (i) This song is called      ■ *Kalinka*                      ■ *The Little Sandman*                      ■ *The Wexford Carol*
- (ii) The form is                      ■ AABA                      ■ AABC                      ■ ABBA
- (10)

**Excerpt 2**

- B** (i) This song is                      ■ an art song                      ■ a folk song                      ■ a round
- (ii) The composer is                      ■ Handel                      ■ John of Fornsete                      ■ Paul Simon
- (10)

**Excerpt 3**

- C** (i) This song is from                      ■ a cantata                      ■ a musical                      ■ an opera
- (ii) The melody moves                      ■ by step only                      ■ by leap only                      ■ by step and leap
- (10)

You now have a short pause in which to complete your answer.

Three excerpts from one of your set works.

**Excerpt 1 for the first time. Answer A and B.**

- A** (i) This excerpt is taken from
- |                         |                                 |                                |
|-------------------------|---------------------------------|--------------------------------|
| ■ <i>Carmina Burana</i> | ■ <i>Water Music Suite in D</i> | ■ <i>William Tell Overture</i> |
|-------------------------|---------------------------------|--------------------------------|
- (ii) The composer is
- |          |             |           |
|----------|-------------|-----------|
| ■ Handel | ■ Carl Orff | ■ Rossini |
|----------|-------------|-----------|
- (4)

- B** (i) This work is
- |             |              |            |
|-------------|--------------|------------|
| ■ a cantata | ■ a concerto | ■ an opera |
|-------------|--------------|------------|
- (ii) The form of this movement is
- |                                   |                      |         |
|-----------------------------------|----------------------|---------|
| ■ A A <sup>1</sup> A <sup>2</sup> | ■ A B A <sup>1</sup> | ■ A B C |
|-----------------------------------|----------------------|---------|
- (4)

**Excerpt 1 for the 2nd, 3rd and 4th times. Answer C and D.**

- C** (i) We hear
- |                      |                    |                          |
|----------------------|--------------------|--------------------------|
| ■ female voices only | ■ male voices only | ■ male and female voices |
|----------------------|--------------------|--------------------------|
- (ii) The voices are accompanied by
- |                    |                          |                           |
|--------------------|--------------------------|---------------------------|
| ■ a full orchestra | ■ brass instruments only | ■ string instruments only |
|--------------------|--------------------------|---------------------------|
- (4)

- D** (i) The music is
- |                     |                     |                 |
|---------------------|---------------------|-----------------|
| ■ loud all the time | ■ soft all the time | ■ loud and soft |
|---------------------|---------------------|-----------------|
- (ii) It is
- |            |           |            |
|------------|-----------|------------|
| ■ dramatic | ■ playful | ■ peaceful |
|------------|-----------|------------|
- (4)

**Excerpt 2 played three times. Answer E.**

- E**
- (i) In this excerpt, a new melody is heard
- at a higher pitch       at a lower pitch       at the same pitch
- (ii) The speed is
- faster       slower       the same
- (iii) At the start, the voices sing
- unaccompanied       in unison       in harmony
- (6)

**Excerpt 3 played three times. Answer F and G.**

- F**
- (i) The melody sung by the choir is also played by
- clarinets       trombones       strings
- (ii) The melody moves mainly
- by step       by leap       by step and leap
- (4)

- G**
- (i) As the voices hold their final note we hear
- 2 cymbal crashes       4 cymbal crashes       6 cymbal crashes
- (ii) Name another percussion instrument heard in this excerpt.
- 
- (4)

You now have a pause in which to complete your answer.

- Three excerpts, each played twice.
- Answer A, B and C.

**Excerpt 1**

- A (i) This is  a hornpipe  a jig  a reel
- (ii) The time signature is   $\frac{3}{4}$    $\frac{4}{4}$    $\frac{6}{8}$  (8)

**Excerpt 2**

- B (i) The melody is played by the  accordion  fiddle  flute
- (ii) **One** traditional feature of the performance is \_\_\_\_\_  
 \_\_\_\_\_
- (iii) In the background, we hear  a drone  broken chords  repeated notes (11)

**Excerpt 3**

- C (i) This excerpt begins with  solo singing  singing in unison  singing in harmony
- (ii) Name **two** instruments that you hear in this excerpt.
- 1 \_\_\_\_\_ 2 \_\_\_\_\_ (12)

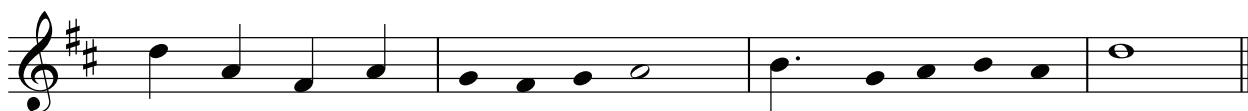
Now answer D. (There is no music on the recording for this part of the question.)

- D Complete these sentences about the harping tradition by circling the correct answer. The first one is done for you.

- A Harp Festival was held in  Belfast  Cork  Sligo
- The festival was attended by  10 Irish harpers  20 Irish harpers  40 Irish harpers
- One of these harpers was called  Derek Bell  Denis Hempson  Turlough O'Carolan
- The tunes were written down by  Edward Bunting  Patrick Joyce  Francis O'Neill (9)

You now have a pause in which to complete your answer.

- A four-bar phrase, played five times on the piano.
- There will be a pause after each playing.
- The keynote doh and the tonic chord will be sounded before each playing.
- You will hear the pulse on the metronome before and during the **first two playings only**.
- To help you, the first four notes and the outline of the melody are given.
- Answer A and B.



- A** Write in the **time signature**. (4)
- B** Add stems and beams, where appropriate, to complete the **rhythm**. (36)

You now have a long pause in which to complete your answer.

**Accompanied and Unaccompanied Vocal Church Music and Carols**

Answer A and B now. (There is no music on the recording for these sections.)

**A** Name your **chosen song** in this category and its composer or source.

(i) Chosen song: \_ \_ \_ \_ \_

(ii) Composer: \_ \_ \_ \_ \_

or

Source of the song: \_ \_ \_ \_ \_

\_ \_ \_ \_ \_

(6)

**B** Give **one** musical feature of this song.

\_ \_ \_ \_ \_

\_ \_ \_ \_ \_

(3)

You will now hear four excerpts, each played three times.

Answer the questions on each excerpt.

**Excerpt 1**

**C** (i) The melody at the beginning is played by

■ cellos

■ flutes

■ trumpets

(ii) These instruments belong to the

■ brass family

■ string family

■ woodwind family

(iii) The singer is

■ an alto

■ a soprano

■ a tenor

(9)



**Excerpt 2**

D (i) In the background we hear

- a harp
- a piano
- a pipe organ

(ii) The vocal texture is

- monophonic (a single melody line)
- homophonic (a melody supported by harmony)
- polyphonic (two interweaving melodies)

(8)

**Excerpt 3**

E Circle **two** of the following features that you hear in the music.

- major tonality
- fast tempo
- a melody on the oboe
- singing in harmony
- solo singing
- a melody on the French horn

(8)

**Excerpt 4**

F (i) Describe the mood of this excerpt.

-----

(ii) Give **one** melodic feature of the music in this excerpt.

-----

(6)

You now have a long pause in which to complete your answer.

Blank Page

## II—COMPOSING

Question 6

TRIADS

40 marks

- The verse below, played once only.
- This is the last piece you will hear on the recording.
- Answer A, B, C and D.

### Isle of Innisfree

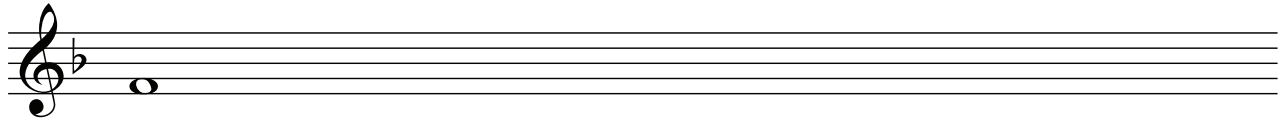
Richard Farrelly

- A** What are the letter names of the **three** notes at X?      -----      -----      -----      (12)
- B** These notes form the triad of      ■ C      ■ F      ■ G      (10)
- C** This triad is      ■ major      ■ minor      (8)
- D** Select **one** bar where this triad fits the melody.      ■ bar 4      ■ bar 6      ■ bar 15      (10)

Answer **one** of the following - A or B or C.

**Preparation**

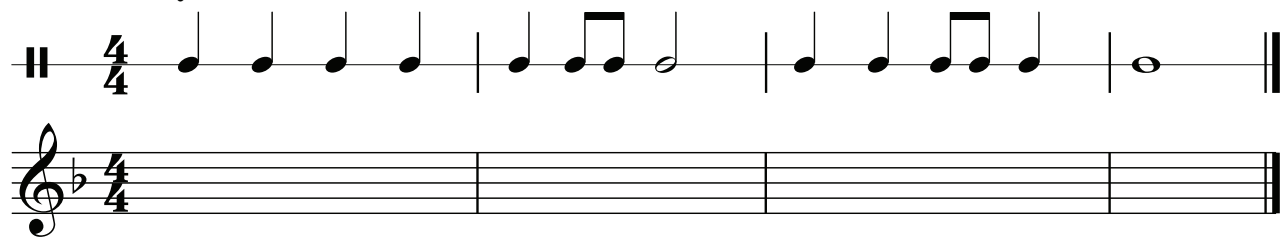
If you wish, write the scale of F on the staff below, beginning as indicated. This may help you to plan your answers to A, B or C.



**A A PHRASE SET TO A GIVEN RHYTHM**

Study this rhythm pattern.

**Lively**



Now complete the melody.

Use the following guidelines:

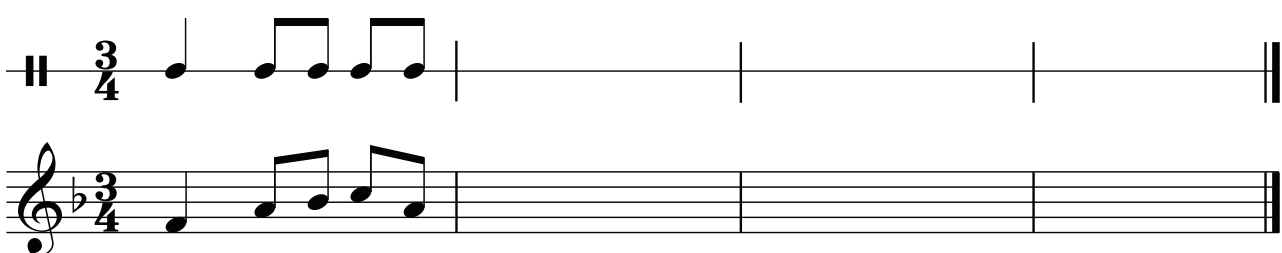
- 1 Compose your own melody in the key of F to the given rhythm. (48)
- 2 End on the keynote, that is, doh. (6)
- 3 Add suitable phrasing. (6)

or

**B A PHRASE SET TO A GIVEN OPENING**

Study this opening.

**Waltz time**



Now complete the melody.

Use the following guidelines:

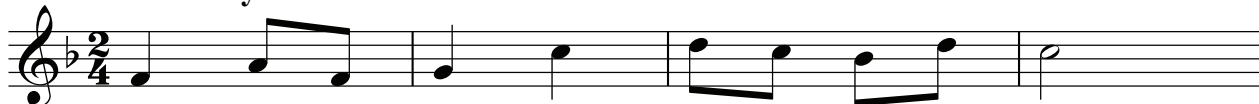
- 1 Add three more bars of a rhythm pattern. (16)
- 2 Compose a melody in the key of F to this rhythm. (32)
- 3 End on the keynote, that is, doh. (6)
- 4 Add suitable phrasing. (6)

or

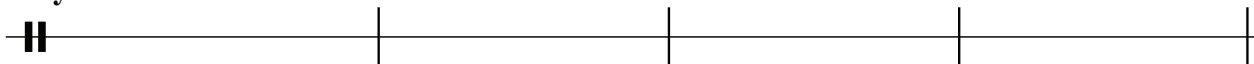
**C AN ANSWERING PHRASE**

- Study this opening phrase.

**Moderately**



**Rhythm**



**Melody**



- Now compose an answering phrase above to finish the melody.  
Make your answering phrase **different** from the opening phrase.
- Use the following guidelines:

- 1 Write a four-bar rhythm pattern. (16)
- 2 Compose a melody in the key of F to this rhythm. (32)
- 3 End on the keynote, that is, doh. (6)
- 4 Add suitable phrasing. (6)

### III—GENERAL STUDY

Question 8

20 marks

#### Day-to-day music, modern art music, ethnic music (other than Irish), medieval and renaissance music or the popular tradition

Answer A, B and C.

**A** Name your general study. \_\_\_\_\_ (2)

**B** List **two** pieces of music from your general study.  
Name the composer or performer in each case.

(i) Piece 1: \_\_\_\_\_

Composer or performer: \_\_\_\_\_

(ii) Piece 2: \_\_\_\_\_

Composer or performer: \_\_\_\_\_

(8)

**C** Write an account of your general study. Include a description of some musical features.

-----  
-----  
-----  
-----  
-----  
-----  
-----  
-----  
-----  
-----  
-----



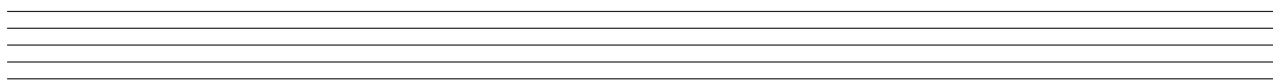
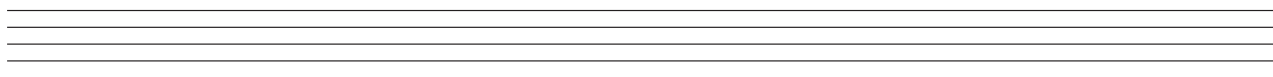
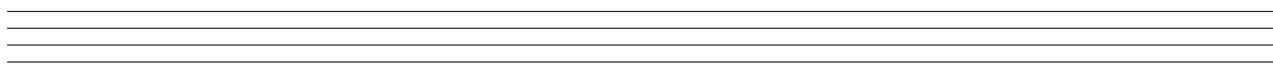
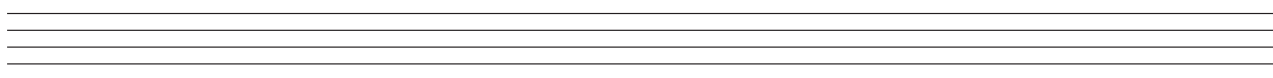
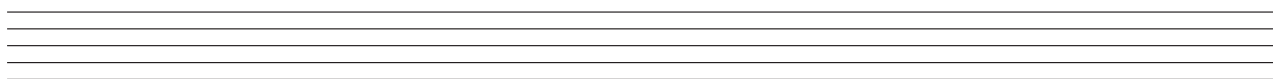
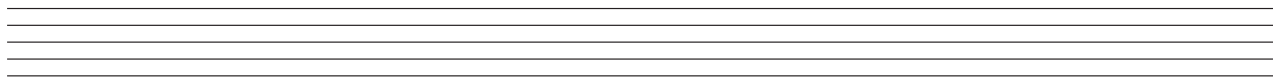
## Rough Work

A series of 20 horizontal dashed lines for writing.

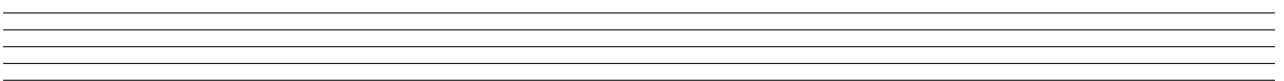
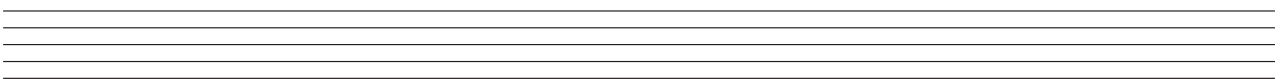
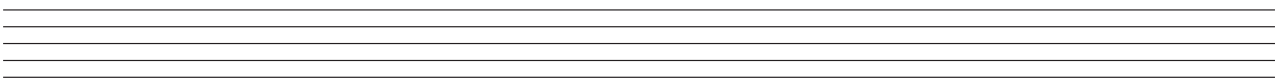
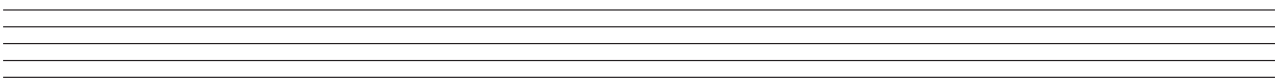
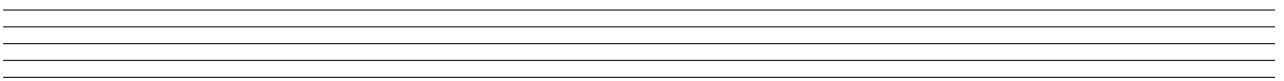
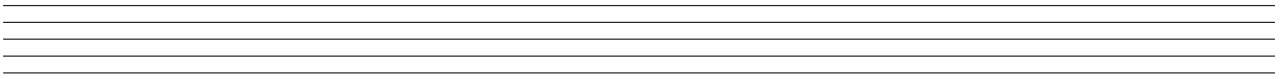
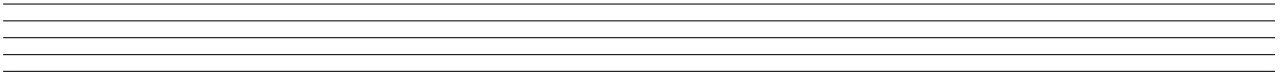




## Rough Work



# Rough Work



Blank Page