



**Coimisiún na Scrúduithe Stáit
State Examinations Commission**

LEAVING CERTIFICATE EXAMINATION

GEOGRAPHY – ORDINARY LEVEL

SAMPLE PAPER

**N.B. Remember to return this paper with your answer-book.
Otherwise, marks will be lost**

PART ONE – SHORT-ANSWER QUESTIONS – 100 MARKS

Attempt TEN questions

All Questions carry equal marks

THESE QUESTIONS TO BE ANSWERED IN THE SPACES PROVIDED

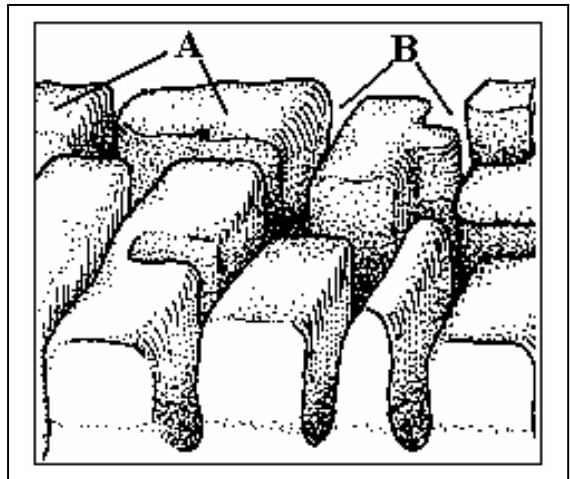
1. Examine this diagram of a limestone pavement.

a. Name the landforms:

A. _____

B. _____

b. Name a region where such landforms may be found:



c. Of what type of weathering are such landforms a result?

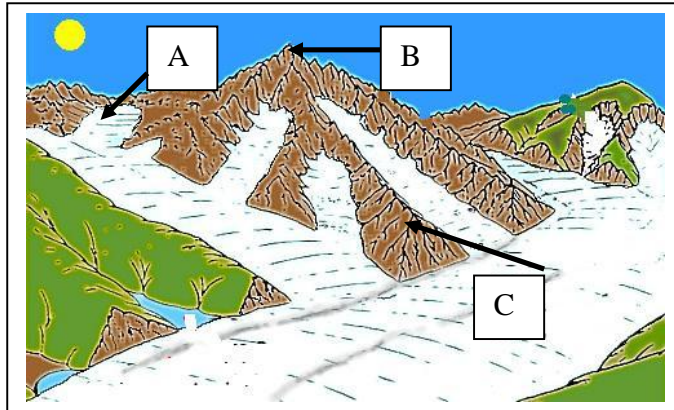
Mechanical

OR

Chemical

[10]

2. Examine this diagram of a Glacial landscape.



a. Apply the labels A to C as appropriate to the landforms shown, using the table below:

Landform	Label
Arete	
Corrie/cirque	
Pyramidal peak	

b. All these landforms are the result of:

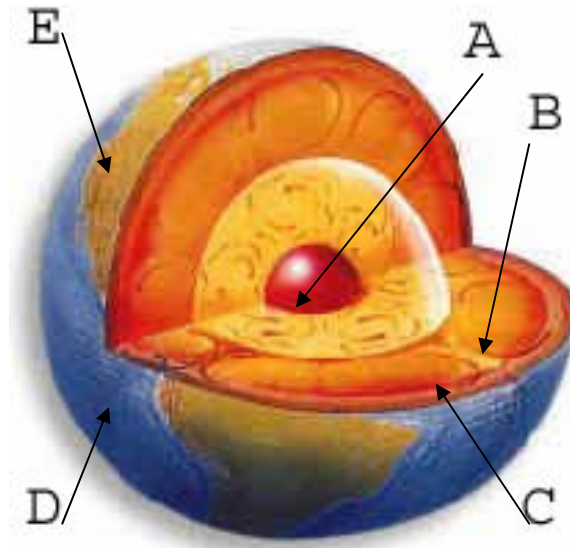
Deposition

OR

Erosion

[10]

3. Earth's Structure



Examine this diagram.

Write **each** of these labels in the correct space beside letters A to E.

Ocean, Core, Crust, Mantle, Continent.

A	
B	
C	
D	
E	

[10]

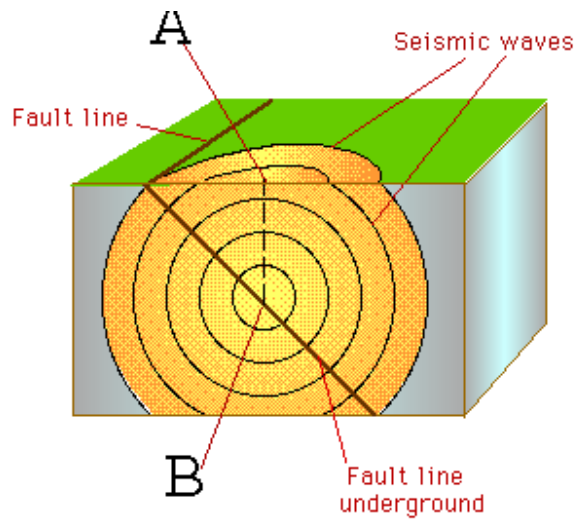
4. Rivers and Glaciers

Assign the above labels as appropriate to each landform below.

V-shaped valley		Moraine	
Esker		U-shaped valley	
Meander			

[10]

5. Earthquakes



Answer these questions.

- 1) **B** is the point where the actual earthquake occurred. It is known as the:
epicentre / focus / richter point.
- 2) **A** is the point on the earth's surface directly above where the earthquake occurred. It is known as the: epicentre / focus / hot point.
- 3) Earthquakes are measured using an instrument called a:
seismograph / thermograph / cardiogram.
- 4) Earthquake magnitude is classified according to the:
Mercalli Scale / Beaufort Scale / Richter Scale.

[10]

6. Regions - Ireland

Type of Region	
Economic Peripheral	A
Economic Core	B
Language	C
Administrative	D
Climate	E

Example	
Cool Temperate Oceanic	1
Gaeltacht	2
County	3
Ireland's BMW	4
Dublin	5

A	
B	
C	
D	
E	

Match **each** type of region with the correct example in the spaces provided.

[10]

7. Ordnance Survey

Examine the Ordnance Survey extract of Mullingar supplied.

The scale of this map, expressed as a Representative Fraction [RF] is _____.

This means that one _____ on the map represents _____ on the ground.

Each grid square represents _____ square _____.

[10]

8. Ordnance Survey

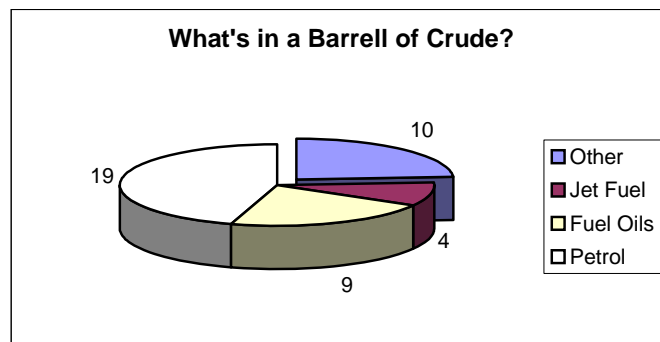
Examine again the OS extract supplied.

Grid Reference		Feature			
N 426 587	A	Railway Station	1	A	
N 434 527	B	Triangulation Point 171m	2	B	
N 469 563	C	Castle	3	C	
N 377 585	D	Nature Reserve	4	D	
N 476 507	E	Stream Confluence	5	E	

Match each grid reference with the correct feature in the spaces provided.

[10]

9. A Barrel of Crude Oil [Figs in US Gallons]

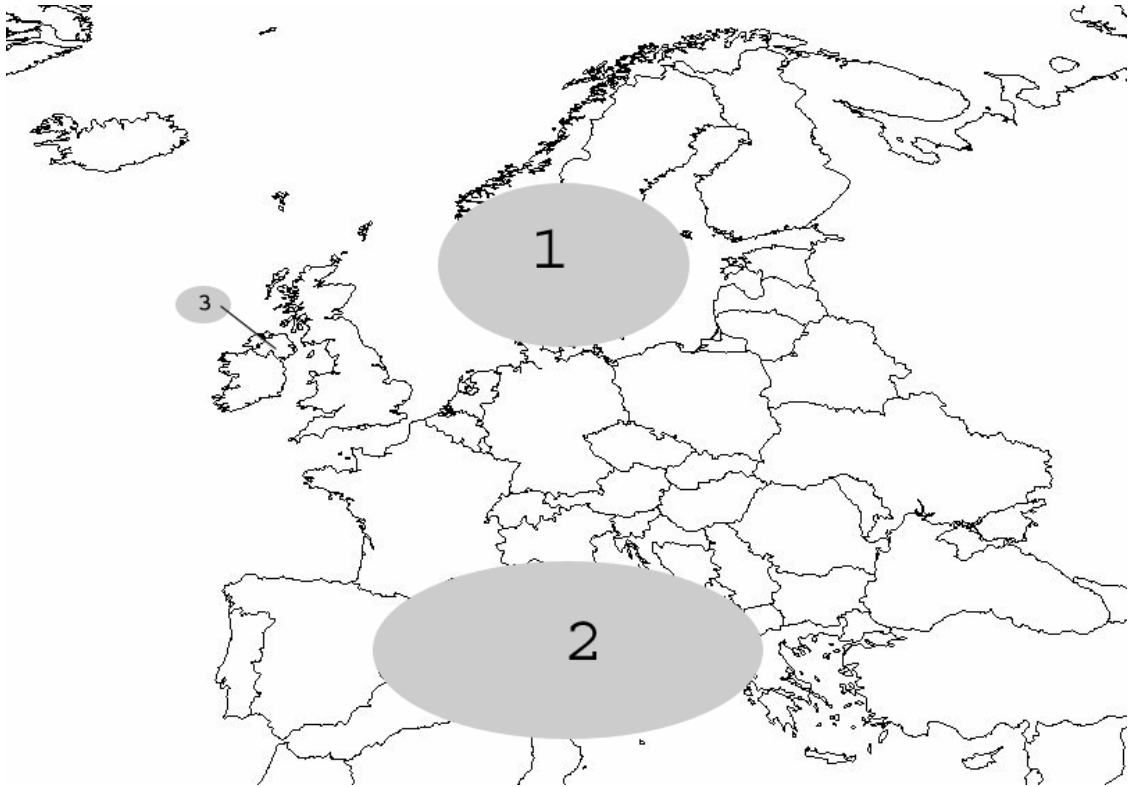


Examine this chart, showing the various products of refining crude oil.

- How many gallons are there in total in a barrel of crude? _____
- Which product holds the largest share?: _____
- Name the process of making these products from crude oil: _____
- What type of chart is this? _____

[10]

10. European Regions



Examine this map of regions in Europe.

a) Name the regions numbered 1 to 3:

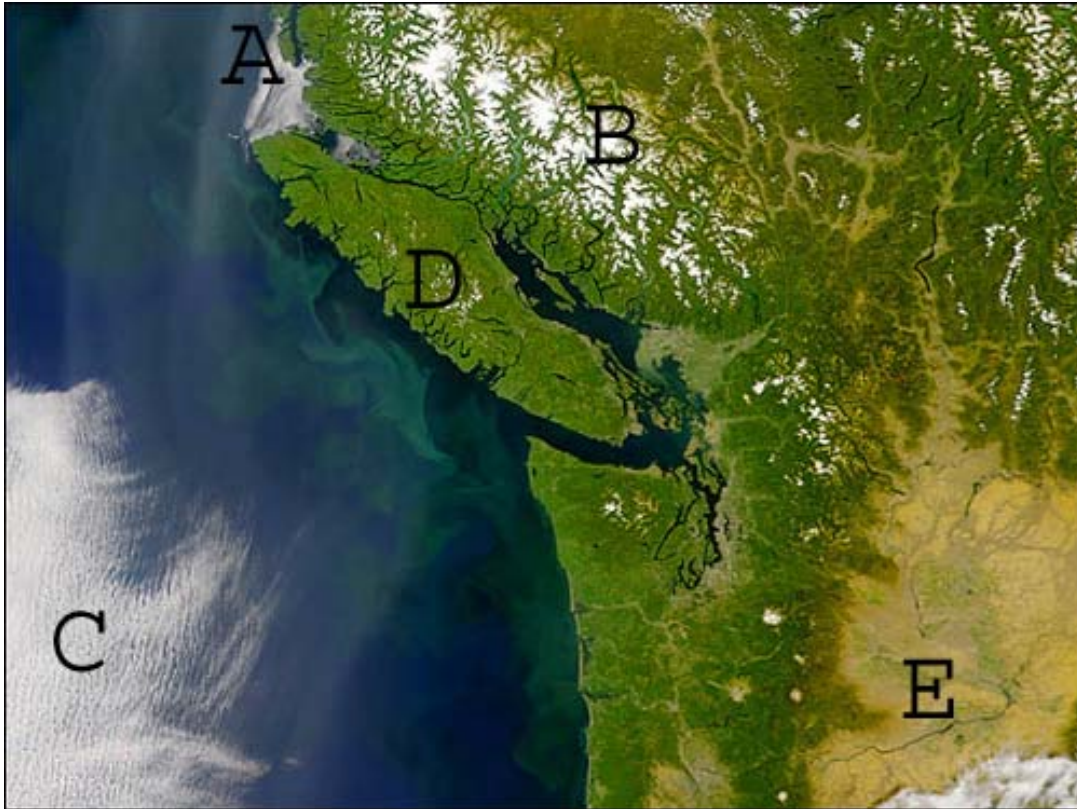
1. _____; 2. _____;

3. _____.

b) How many counties are contained in region 3?: _____

[10]

11. Satellite Imagery

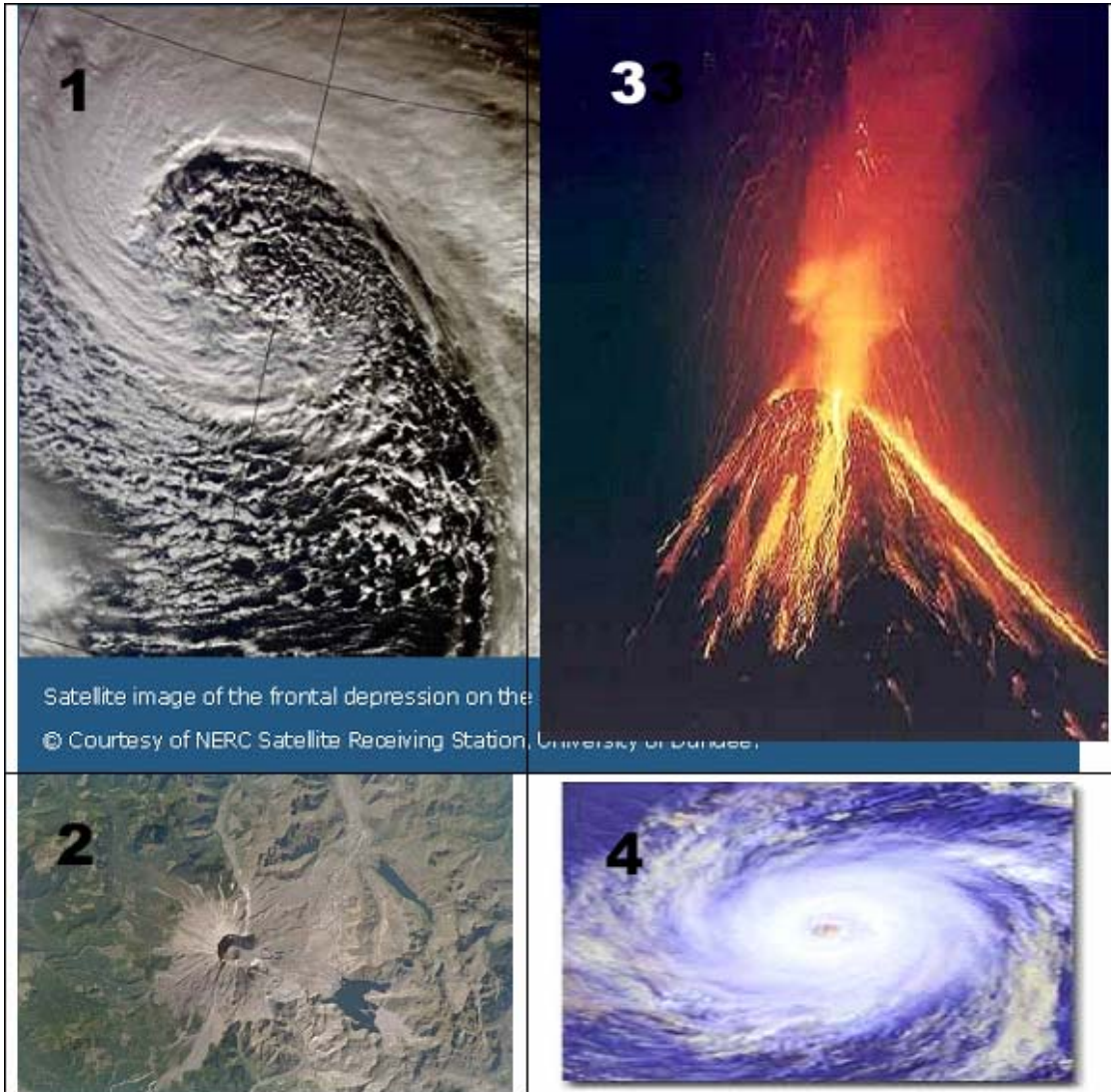


Examine this satellite image of part of the west coast of USA and Canada.
Associate each of the letters A to E on the image with the appropriate features below:

Feature	Number
A River Valley	
Coastal fog bank	
Snowfields	
Large Island	
Thin cloud	

[10]

12. More Images



Examine these images.

Number each of the following descriptions:

Feature	Image Number
Dormant Volcano	
Hurricane	
Atlantic Depression	
Erupting Volcano	

[10]

PART TWO – STRUCTURED QUESTIONS – 300 MARKS

Candidates must attempt **THREE** questions, as follows:

- **Two** questions from Section 1 [Questions 1 to 6]
- **One** question from Section 2 [Questions 7 to 12]

THESE QUESTIONS TO BE ANSWERED IN THE ANSWERBOOK

SECTION 1 - CORE

You **MUST** attempt **TWO** questions:

ONE from **Patterns and Processes in the Physical Environment**
AND

ONE from **Regional Geography**

PATTERNS AND PROCESSES IN THE PHYSICAL ENVIRONMENT

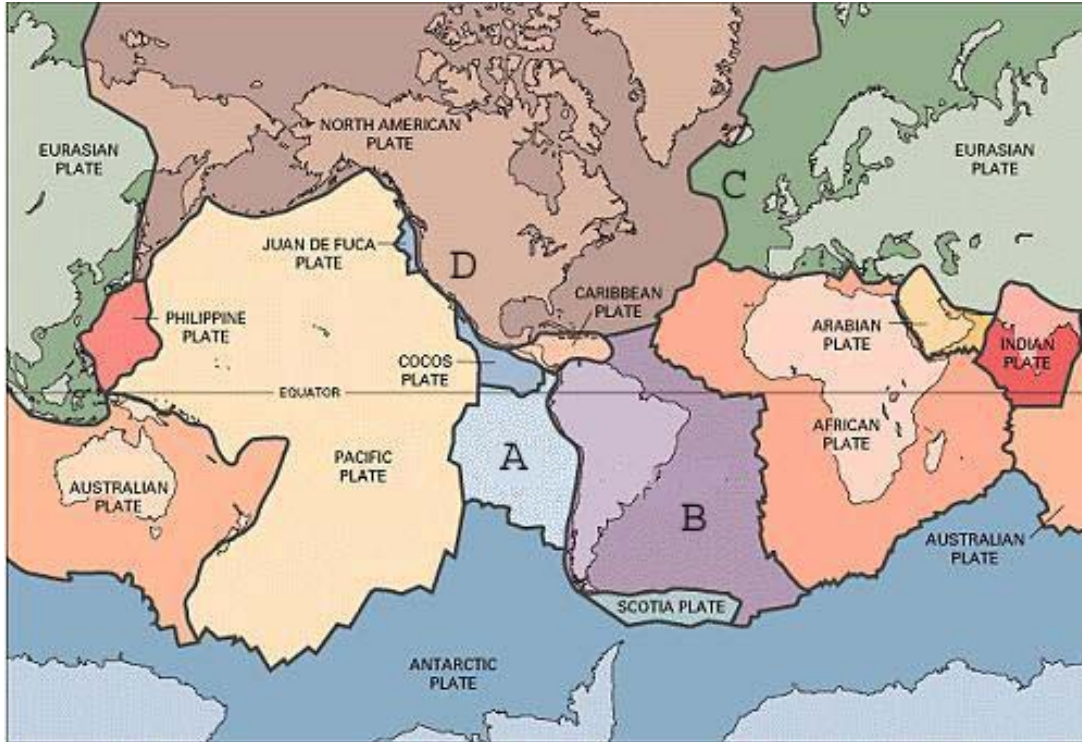
Attempt ONE question

Question 1

Examine the Ordnance Survey extract of the Mullingar region supplied.

- A. Draw a sketch-map of the area to show:
- Two lakes
 - The Royal Canal
 - The Royal Canal Supply
 - A river
- [30]
- B. Examine the formation of any **two** Irish landforms, with reference to the surface processes which formed them.
- [40]
- C. Explain **one** way in which human activities can have an effect on how natural surface processes act
- [30]

Question 2



Examine this map of global crustal plates.

A. With reference to the labels shown:

- a) Name the crustal plates A: _____ and B _____
- b) Name the type of plate margin at C _____ and
at D _____.

[30]

B. Explain how Plate Tectonics helps us to understand the worldwide distribution of earthquakes and volcanoes.

[40]

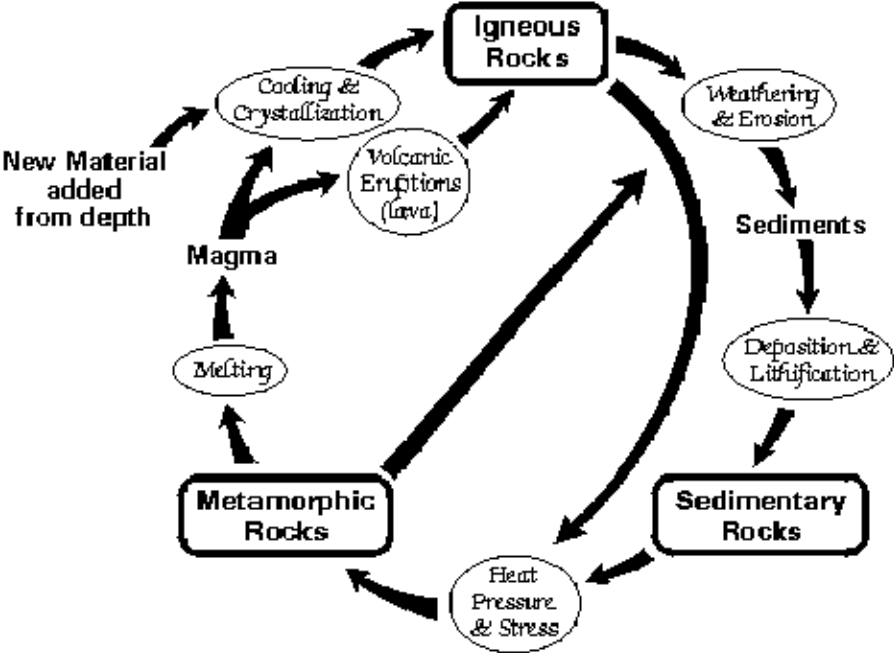
C. Examine briefly how:

- (i) earthquakes are measured
- (ii) earthquakes may be predicted one day.

[30]

Question 3

The Rock Cycle



- A. Name an example of each of the **three** rock classes and give Irish locations for any **two** of them. [30]
- B. Name **one** type of rock which is common in Ireland. Explain: [40]
- How such rocks are formed
 - How rock structure influences the development of landforms.
- C. Examine in detail **one** way in which humans make economic use of rocks. [30]

REGIONAL GEOGRAPHY

Attempt ONE question

Question 4:

- A. Draw a sketch-map of Ireland.
On it mark and name **two** contrasting regions. [30]
- B. Select a non-Irish, European region and examine **two** factors which
have influenced the development of its agriculture. [40]
- C. Examine the development of **one** important economic activity in a non-European
region of your choice. [30]

Question 5:

- A. Examine the Ordnance Survey extract of Mullingar supplied.
Draw a sketch-map of the area and on it mark and name:
- An area of mixed woodland
 - The built-up area of Mullingar town
 - A rural area with no evidence of modern settlement
 - A rural area with linear settlement
 - An area defined as a Nature Reserve
- [30]
- B. Explain, with reference to an example you have studied, the development of **one** economic core region in Europe.
- [40]
- C. Explain **one** challenge facing **one** non-European region you have studied.
- [30]

Question 6:

- A. Examine the aerial photograph of part of Mullingar town supplied.
Draw a sketch-map of the area shown on the photograph.
On it mark and name:
1. **Two** churches
 2. **Two** connecting streets
 3. **Three** areas with different types of urban land-use.
- [30]
- B.. Examine the development of **two** contrasting economic regions in Ireland.
- [40]
- C. Examine the development of **one** non-Irish cultural region you have studied.
- [30]

SECTION 2 - ELECTIVES

You **MUST** attempt **ONE** question

From **EITHER**

- **Patterns and Processes in Economic Activities**
- OR
- **Patterns and Processes in the Human Environment**

PATTERNS AND PROCESSES IN ECONOMIC ACTIVITIES

Attempt **ONE** question

Question 7:

Ireland Unemployment Rate as % of Total Workforce: 1993 – 2003

1993	1995	1997	1999	2001	2003
15.6	12.3	9.9	5.6	3.9	4.6

Examine this table.

- A. Use graph paper to draw a graph suitable to illustrate these data. [30]
- B. Examine **two** reasons for the trend shown by these data. [40]
- C. Explain **one** example of the economic decline of a region you have studied. [30]

Question 8:

Who Shares?	% Share
Picker/Grower	?
Warehouser/Packer	15
Exporter	5
Shipper	10
Importer/Wholesaler	20
Retailer	40

- A. Examine this chart, showing how the final retail price of a banana is shared among all of those along the production chain.
- a) Calculate the percentage received by the picker/grower.
 - b) Suppose the retail price of a banana is 20c. Calculate how much is received by:
 - a. The picker/grower
 - b. The retailer
 - c) Name **two** other similar commodities.
- [30]
- B. Explain why the producers of commodities such as bananas receive so little of the final retail price.
- [40]
- C. With reference to an example you have studied, explain **one** advantage **and one** disadvantage for Ireland to depend on multinational companies setting up business here.
- [30]

Question 9:

Growth Rates and Shares of Ireland's Total Primary Energy Requirement

FUEL	Growth % 1990 - 2003	Av Annual Growth Rate % 1990 - 2003	Shares % 1990	Shares % 2003
Coal	-11.6	-0.9	23.0	12.9
Peat	-38.3	-3.6	14.4	5.7
Oil	86.6	4.9	45.5	54.1
Natural Gas	154.8	7.5	15.4	24.9
Renewables	54.2	3.4	1.8	1.8
Total	57.0	3.5		

Growth Rates and Shares of Ireland's Total Primary Energy Requirement by Sector

SECTOR	Growth % 1990 - 2003	Av Annual Growth Rate % 1990 - 2003	Shares % 1990	Shares % 2003
Industry	23.1	1.6	27.2	21.4
Transport	122.8	6.4	21.9	31.2
Residential	27.1	1.9	31.3	
Commercial/Public	88.1	5.0	16.1	19.3
Agriculture	23.7	1.6	3.5	2.8

A . Examine the tables above.

- 1) Which fuel showed the greatest growth rate over the period?
- 2) Which fuel showed the greatest change in share 1990/2003 and calculate the change in %
- 3) Calculate the % share for the Residential sector in 2003.

[30]

B. Explain the economic **and** the environmental costs of the 122% growth in the Transport sector..

[40]

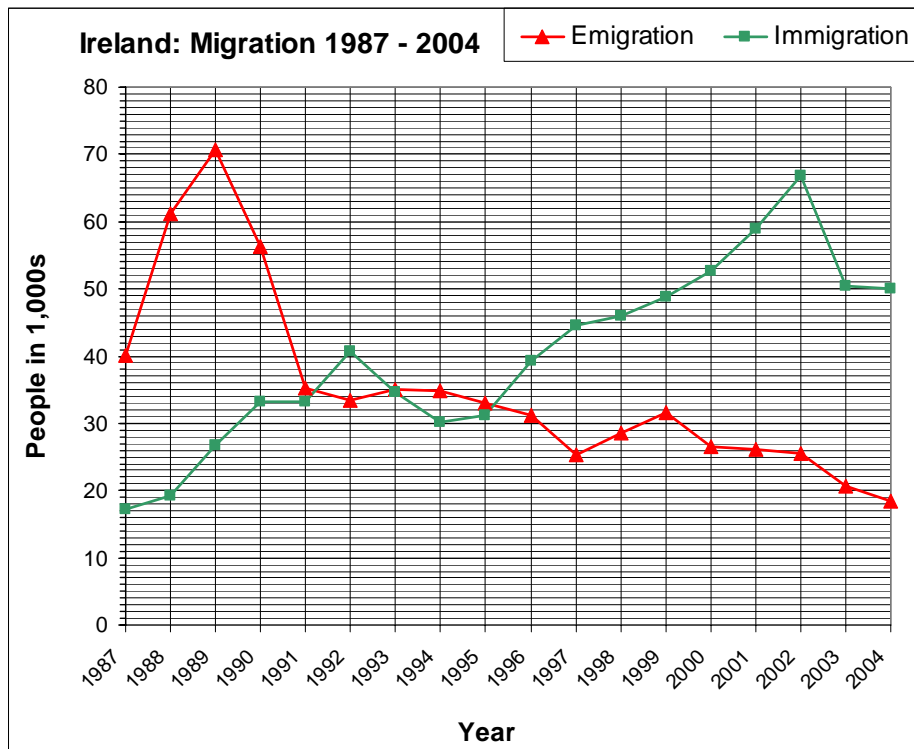
C. Examine the potential of developing renewable energy sources in the near future.

[30]

PATTERNS AND PROCESSES IN THE HUMAN ENVIRONMENT

Attempt ONE question

Question 10:



A. Study this chart, showing Irish Migration Patterns between 1987 and 2004.

- In which year did emigration peak?
- When did immigration first exceed emigration?
- Calculate the difference between emigration and immigration in 2003.

[30]

B. Study the 1:50000 Ordnance Survey extract supplied with this paper.

- 1) Name and locate, using grid references, **two** patterns which can be identified in the rural settlement of the region shown on the extract.
- 2) Explain why **each** of the patterns developed.

[30]

C. Examine the impact of rural-urban migration in Ireland in the past 25 years on (i) rural areas and (ii) urban areas.

[40]

Question 11:

- A. Examine the Ordnance Survey extract of Mullingar supplied.
- 1) Name and give a six-figure grid reference for **three** types of antiquities on the extract.
 - 2) Explain the development of the modern rural settlement pattern in grid square N4755.
- [30]
- B. Explain **two** of the major social problems caused by rapid urban growth.
- [30]
- C. Examine **one** positive **and one** negative aspect of the Irish Government's National Development Plan to date.
- [40]

Question 12:

Population Structure – Ireland – Census 2002

Age [years]	Number	Percentage
65 – 85+	436,001	11
15 – 64	2,653,774	68
0 – 14	827,428	21
Totals	3,917,203	100

- A. Examine this table.
Calculate the Dependency Ratio for Ireland.
- [25]
- B. Examine **one** positive **and one** negative effect of such a dependency ratio for Ireland.
- [50]
- C. Explain **one** major factor which has global impact on human mortality rates.
- [25]

Blank Page

Blank Page

Blank Page

Blank Page